



Pickering Place | Garforth | LS25 2QJ

£430,000

Three Bedroom Detached House | Council Tax Band D | EPC Rating B

Emsleys | estate agents

SUMMER SALE!!! PRICE WAS £440,000, PRICE NOW £430,000 SAVING £10,000! CALL NOW TO BOOK YOUR VIEWING!

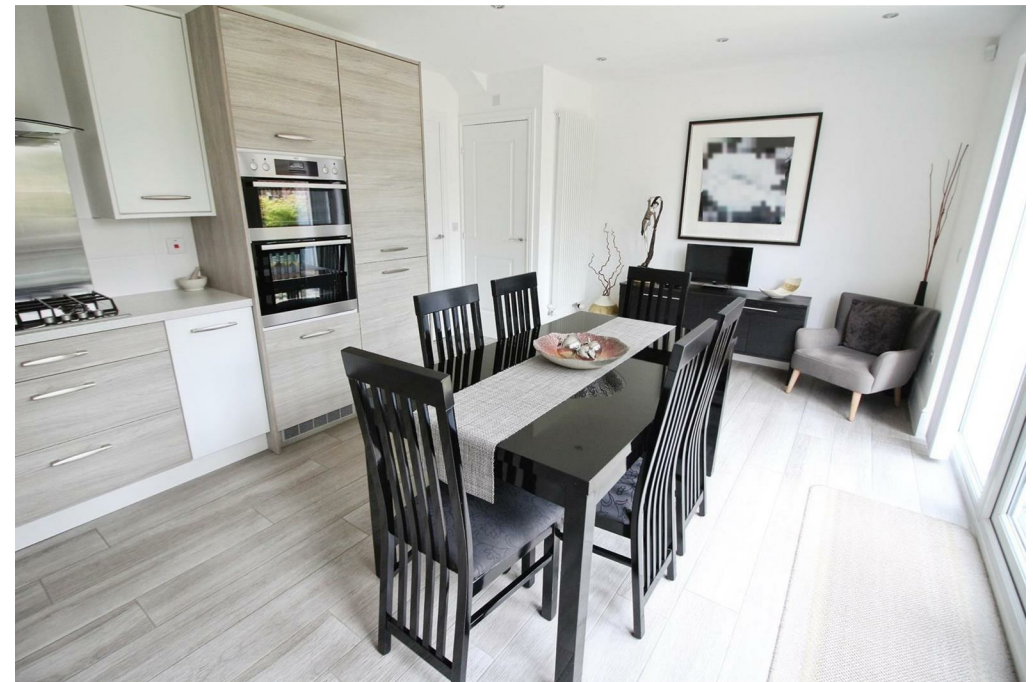
* THREE BEDROOM MODERN STYLE DETACHED PROPERTY * BUILT BY REDROW BUILDERS IN 2019 * BEAUTIFULLY PRESENTED INSIDE & OUT * DINING KITCHEN WITH BUILT-IN APPLIANCES * GARAGE & GARDENS *

Immaculately presented and well maintained through-out, modern three bedroom detached house. Built by the esteemed Redrow builder in 2019, offering a number of years of the NHBC certificate remaining, this is a perfect blend of modern living and comfort.

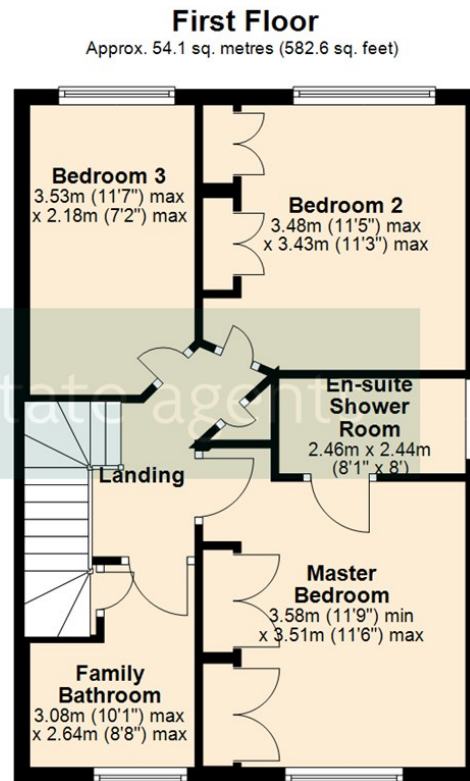
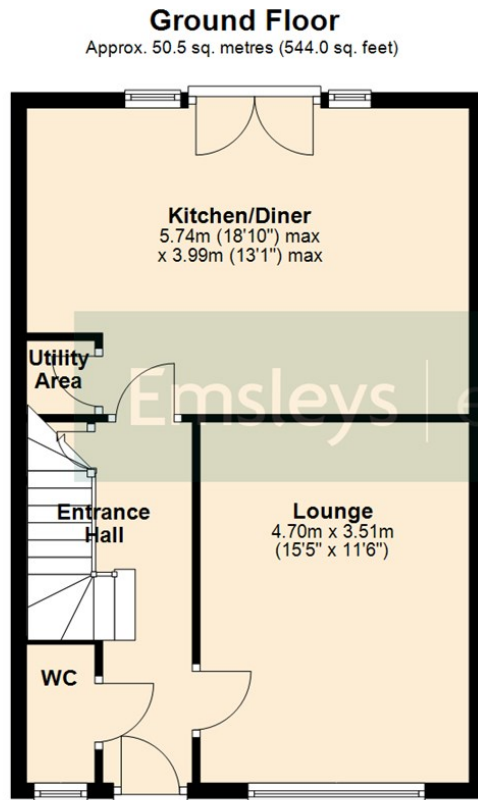
The heart of the home is undoubtedly the fitted dining kitchen, which boasts built-in appliances, utility cupboard and large French doors out into the beautiful garden, making it a delightful space for both cooking and entertaining. The spacious lounge, with feature fireplace, provides ample room for relaxation and social gatherings, ensuring that there is plenty of space for everyone to enjoy. With three well-proportioned bedrooms - two of which have fitted wardrobes, including a master suite complete with an en-suite shower room, plus a tiled family bathroom and guest W.C - this property is ideal for families or those seeking extra space.

Outside, the property features a beautifully maintained rear garden, with well stocked beds and central lawn, as well as a patio seating area - perfect for outdoor activities or simply unwinding in a tranquil setting. The single garage and driveway offer parking for up to three vehicles, adding to the convenience of this splendid home.

This property is not only immaculate inside and out but also benefits from a prime location in Garforth, known for its friendly community and excellent local amenities and schools. Whether you are looking for a family home or a peaceful retreat, this house is sure to impress. Do not miss the opportunity to make this stunning property your own!







Total area: approx. 104.7 sq. metres (1126.6 sq. feet)

These details are for guidance only and complete accuracy cannot be guaranteed. If there is any point, which is of particular importance, verification should be obtained. They do not constitute a contract or part of a contract. All measurements are approximate. No guarantee can be given with regard to planning permissions or fitness for purpose. No apparatus, equipment, fixture or fitting has been tested. Items shown in photographs are NOT necessarily included. Interested Parties are advised to check availability and make an appointment to view before travelling to see a property.



6 Main Street | Garforth | Leeds | LS25 1EZ

t: 0113 286 4000 www.emsleysestateagents.co.uk

Emsleys | estate agents