



11 Harvest Meadows Greysteel, BT47 3FB



Homepage are delighted to present this stunning 3 bedroom detached modern family home in the popular Harvest Meadows Development.

This large family home has undergone a full recent modernisation to include new kitchen, bathrooms, tiling, flooring throughout and comprises of spacious entrance hall, storage, spacious living room with feature media wall and TV, modern kitchen / dining with all new appliances and ample storage, separate utility and W.C.

The first floor comprises of landing with storage, three generous bedrooms with master ensuite and new family bathroom with full height tiling and free standing bath.

Externally this property further benefits from decorative finishes and a privately enclosed rear garden with newly landscaped lawns and modular shed.

This home has been recently renovated to a high quality standard throughout with stunning internal & external finishes, perfect for the first time buyer, young professional and the growing family.

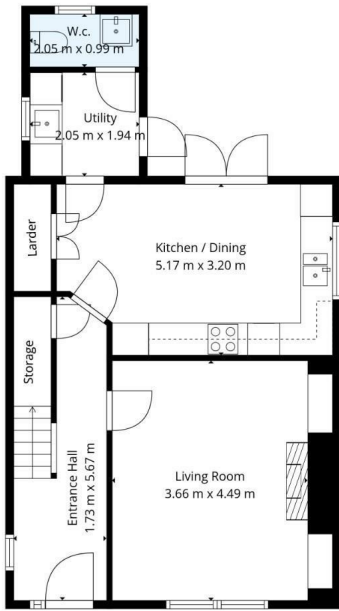
No Price

Viewing

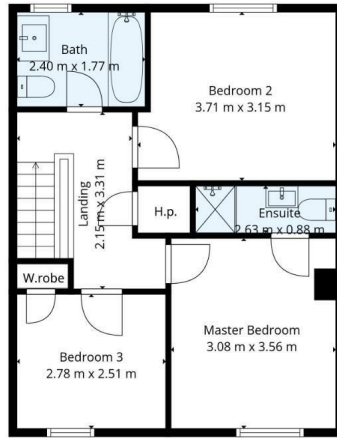
Please contact our Homepage Estate Agents Office on 028 7187 6261

if you wish to arrange a viewing appointment for this property or require further information.

- LARGE 3 BEDROOM DETACHED FAMILY HOME
- FULLY MODERNISED THROUGHOUT
- STUNNING INTERNAL FINISHES
- FEATURE MEDIA WALL WITH FIRE & TV
- NEW KITCHEN & BATHROOMS
- NEW FLOORING THROUGHOUT
- LARGE PRIVATE REAR GARDEN
- MODULAR SHED WITH ROLLER DOOR
- SOUGHT AFTER LOCATION

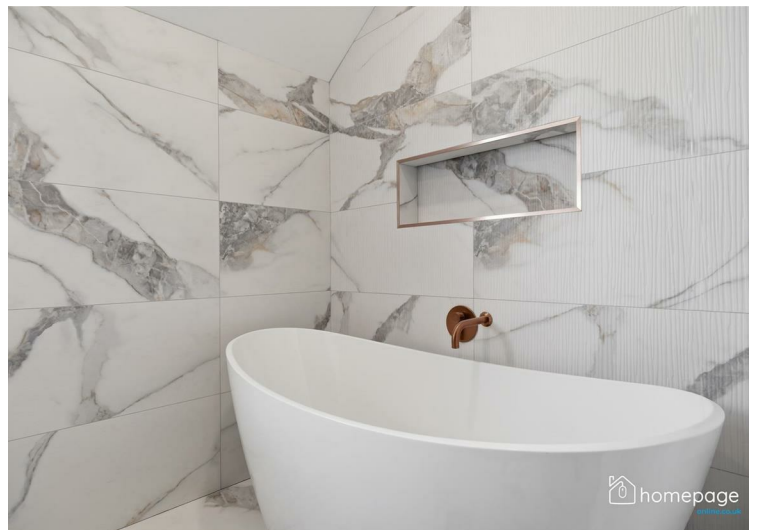


1st Floor



2nd Floor

Energy Efficiency Rating		
	Current	Potential
Very energy efficient - lower running costs		
(92 plus) A		
(81-91) B		
(69-80) C		
(55-68) D		
(39-54) E		
(21-38) F		
(1-20) G		
Not energy efficient - higher running costs		
Northern Ireland		EU Directive 2002/91/EC
Environmental Impact (CO ₂) Rating		
	Current	Potential
Very environmentally friendly - lower CO ₂ emissions		
(92 plus) A		
(81-91) B		
(69-80) C		
(55-68) D		
(39-54) E		
(21-38) F		
(1-20) G		
Not environmentally friendly - higher CO ₂ emissions		
Northern Ireland		EU Directive 2002/91/EC



These particulars, whilst believed to be accurate are set out as a general outline only for guidance and do not constitute any part of an offer or contract. Intending purchasers should not rely on them as statements of representation of fact, but must satisfy themselves by inspection or otherwise as to their accuracy. No person in this firm's employment has the authority to make or give any representation or warranty in respect of the property.