

FLOOR PLAN

DIMENSIONS

Entrance Hall

Kitchen
10'04 x 5'11 (3.15m x 1.80m)

Lounge/Diner
14'07 x 12'04 (4.45m x 3.76m)

Bedroom One
12'03 x 11'10 (3.73m x 3.61m)

Bedroom Two
12'06 max x 5'10 (3.81m max x 1.78m)

Bathroom
6'03 x 6'01 (1.91m x 1.85m)

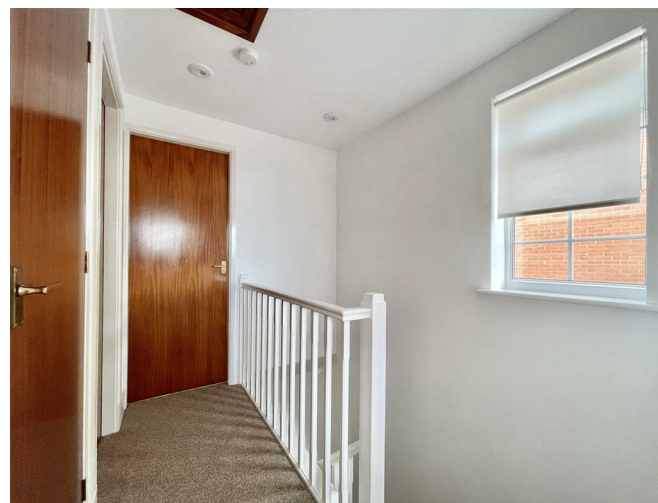
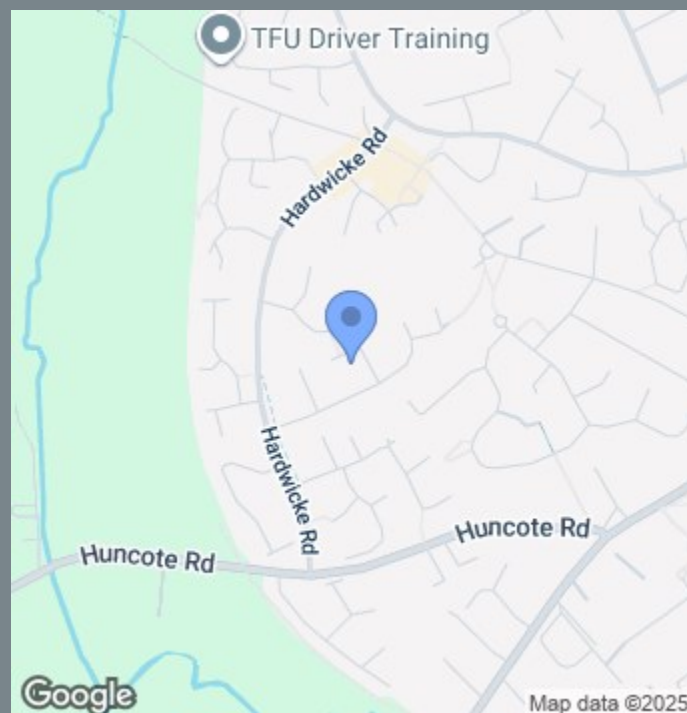


OVERVIEW

- No Onward Chain
- Two Bedrooms
- Ample Driveway
- Great Size Rear Garden
- Perfect For First Time Buyers
- Sought After Location
- Cul-de-sac Location
- Council Tax Band - B
- EPC Rating -D
- Freehold Property

LOCATION LOCATION....

Kingsbridge Close, Narborough, is a quiet and residential part of Leicestershire with a distinctly suburban feel. The surrounding area is well-maintained and peaceful, characterised by modern housing and green spaces. It offers a strong sense of community and benefits from good local infrastructure, including nearby schools, parks, and access to public transport. The area is popular with families and professionals due to its balance of tranquillity and convenience, with shops and essential services located just a short drive away. Overall, it's a calm and well-connected area suited to a relaxed lifestyle.



THE INSIDE STORY

Located on the popular Pastures estate in Narborough, this delightful two-bedroom semi-detached property is ideal for first-time buyers, downsizers, or investors.

The home is ready to move into and comprises a welcoming entrance hall with door leading to your living accommodation. There is a modern fitted kitchen with an array of wall and base units, space for an oven and plumbing for a washing machine. The spacious lounge/diner has patio doors leading out to the generous rear garden.

Upstairs offers a good-sized double bedroom, a spacious single bedroom, and a stylish family bathroom with a shower over the bath, WC, and wash basin. Externally, the property boasts a large rear garden with a well-maintained lawn and patio area, perfect for relaxing or entertaining in the warmer summer months. There is a driveway to the front providing off-road parking. Early viewing is highly recommended to appreciate the space and location on offer.

