

62 Reedsfield Road, Ashford, TW15 2HE



Guide Price £348,950 Freehold



A charming 2 double bedroom semi detached house in immaculate condition quietly situated in a small cul de sac with private garden having wonderful uninterrupted views across open farm land. Highly recommended. No Forward Chain.

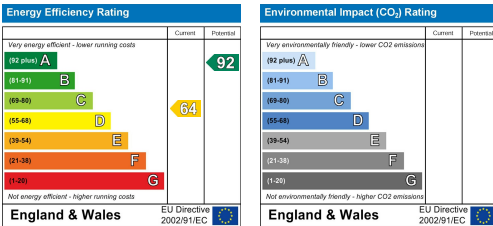
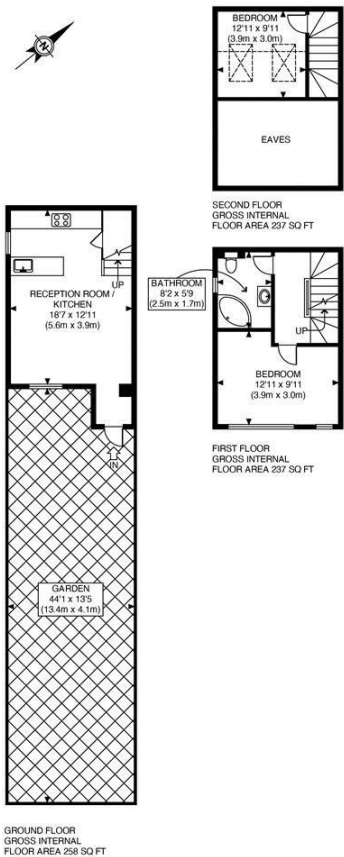
62 Reedsfield Road, Ashford, TW15 2HE

FOR SALE

This splendid semi detached home features a pedestrian entrance to a lawned garden with delightful views of open green space. The front door leads to a charming open plan living area with access to a breakfast bar and modern fitted kitchen. A timber balustraded staircase leads the first floor providing a double bedroom with luxury tiled bathroom and stairs up to the second floor with a further good sized bedroom. With solid oak flooring, double glazing and central heating, a viewing is highly recommended for this ready to move in property.

LOCATION

Situated in a small quiet cul-de-sac near Ashford Recreational Ground and Bedfont Lakes Country Park.. Ashford town centre is just a 15 minutes walk away with Ashford Station also less than a mile away. Close to the A30 which has easy access to Heathrow Airport, Ashford Hospital and the M25.



It is our aim to provide particulars that are both accurate and reliable but they are not guaranteed and would not form part of any offer or contract. Please contact us if you require clarification and we would be happy to assist. Please also note that the appliances and heating system have not been tested and therefore, no warranties can be given as to their condition.