

Milestone

RESIDENTIAL

CELEBRATING 125 YEARS

22 Church Road, Ashford, TW15 2UY

T: 01784 800322

E: enquiries@milestone-residential.com

29 Townsend Road, Ashford, Surrey TW15 3PR



Asking Price £425,000 Freehold



An opportunity to stamp your own identity on this 3 double bedroom detached bungalow that requires full refurbishment with potential to extend as done by neighbouring properties. Sunny South East facing garden. No Forward Chain.

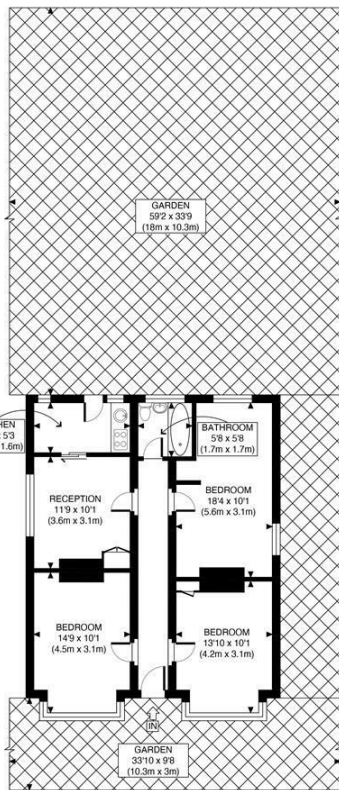
29 Townsend Road, Ashford, Surrey TW15 3PR

FOR SALE

This large 789 sq.ft. detached 3 bedroom bungalow requires complete modernisation and refurbishment with potential to extend further to the rear and into the loft to create an impressive family home. Currently there is 3 bedrooms,, a kitchen, bathroom and lounge all on one level.

LOCATION

Situated in sought after road close to Fordbridge Park with its popular cafe , tennis courts and bowling green is ideal for dog walking. Ashford Town centre and Train Station is just a 10 minutes walk. The nearby A308 provides access to both Sunbury and Staines shopping centre and M3 and M25 motorways.



Energy Efficiency Rating		Environmental Impact (CO ₂) Rating	
Very energy efficient - lower running costs	Current	Very environmentally friendly - lower CO ₂ emissions	Current
(92 plus) A		(92 plus) A	
(81-91) B		(81-91) B	
(69-80) C		(69-80) C	
(55-68) D		(55-68) D	
(39-54) E		(39-54) E	
(21-38) F		(21-38) F	
(1-20) G		(1-20) G	
Not energy efficient - higher running costs		Not environmentally friendly - higher CO ₂ emissions	
England & Wales	EU Directive 2002/91/EC	England & Wales	EU Directive 2002/91/EC

Current Energy Rating: 57
Potential Energy Rating: 85

It is our aim to provide particulars that are both accurate and reliable but they are not guaranteed and would not form part of any offer or contract. Please contact us if you require clarification and we would be happy to assist. Please also note that the appliances and heating system have not been tested and therefore, no warranties can be given as to their condition.