

Milestone

RESIDENTIAL

CELEBRATING 125 YEARS

22 Church Road, Ashford, TW15 2UY

T: 01784 800322

E: enquiries@milestone-residential.com

60D Feltham Road, Ashford, Surrey TW15 1DH



Asking Price £315,000 Leasehold



AN APPEALING AND GOOD SIZED GROUND FLOOR 2-BEDROOM PURPOSE BUILT MAISONETTE WITH OWN GARAGE AND BOTH PRIVATE FRONT AND REAR GARDENS. WITH THE BENEFIT OF CENTRAL HEATING AND DOUBLE GLAZING. HAVING A LONG LEASE WITH LOW OUTGOINGS AND CLOSE TO ASHFORD TOWN CENTRE

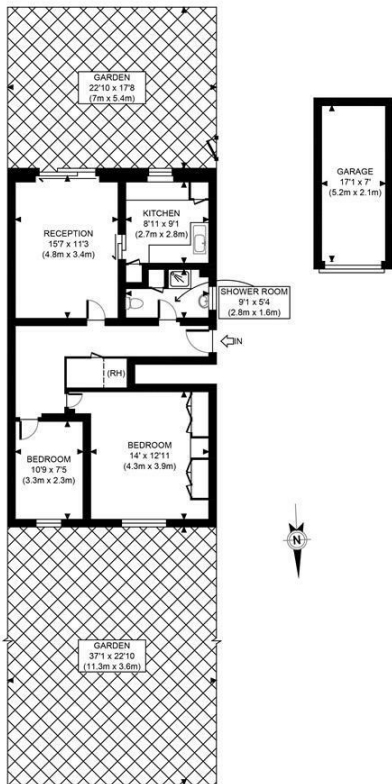
60D Feltham Road, Ashford, Surrey TW15 1DH

FOR SALE

A splendid and spacious ground floor maisonette set within a select block of just 4 flats with the advantage of 2 good sized bedrooms and the entrance hall leading off to a sunny aspect lounge with door to the kitchen and also the private garden and garage. With a long lease, low outgoings and double glazing a viewing is highly recommended.

LOCATION

A convenient location just minutes away from Ashford's main shopping centre with local shops and Clock House recreation ground with sports facilities also conveniently placed.



Energy Efficiency Rating		Environmental Impact (CO ₂) Rating	
Current	Potential	Current	Potential
Very energy efficient - lower running costs		Very environmentally friendly - lower CO ₂ emissions	
(92 plus) A		(92 plus) A	
(81-91) B		(81-91) B	
(69-80) C		(69-80) C	
(55-68) D		(55-68) D	
(39-54) E		(39-54) E	
(21-38) F		(21-38) F	
(1-20) G		(1-20) G	
Not energy efficient - higher running costs		Not environmentally friendly - higher CO ₂ emissions	
EU Directive 2002/91/EC	EU Directive 2002/91/EC	EU Directive 2002/91/EC	EU Directive 2002/91/EC

England & Wales

It is our aim to provide particulars that are both accurate and reliable but they are not guaranteed and would not form part of any offer or contract. Please contact us if you require clarification and we would be happy to assist. Please also note that the appliances and heating system have not been tested and therefore, no warranties can be given as to their condition.