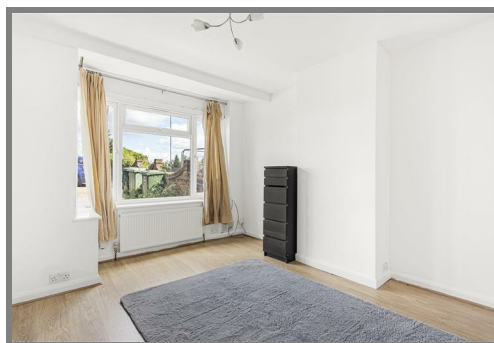


6 London Road, Feltham, TW14 8RW



Asking Price £485,000 Freehold



A corner 3 bedroom, 2 bathroom semi-detached property with potential to extend. Planning permission approved for a loft extension and 2 storey rear extension. Generous off road parking to the front and separate garage. No Forward Chain.

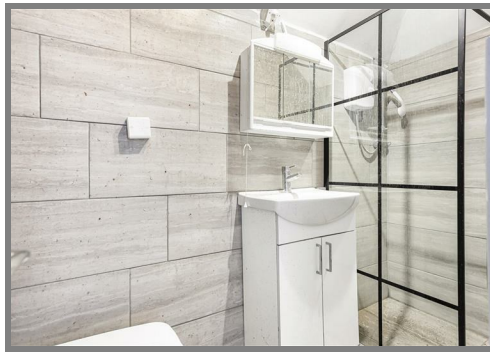
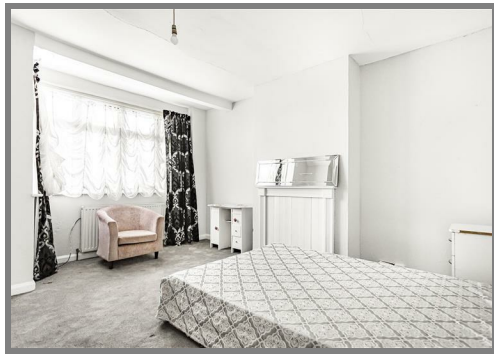
6 London Road, Feltham, TW14 8RW

FOR SALE

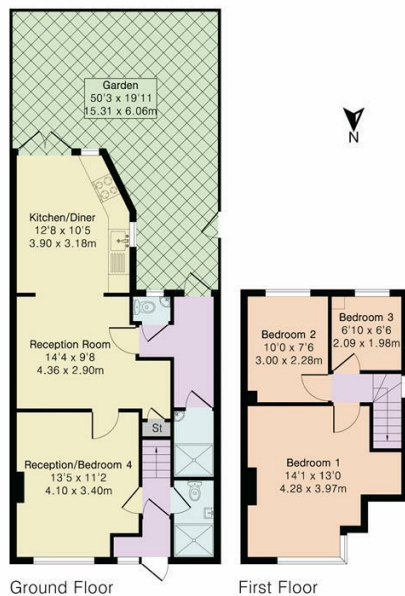
This 3 bedroom semi-detached house has an enclosed porch leading to the entrance hall with door to the front reception room, 2 bathrooms and to an open plan kitchen/diner/family room. The first floor has 3 good sized bedrooms. With patio rear garden and generous off-street parking to the front a viewing is highly recommended. NOTE: please be advised that a garage not shown (at the rear of the garden) is now included in the sale. Planning exists for a loft conversion and also 2 storey rear extension. Planning Ref 22/01512/CPD & 23/00230/HOU.

LOCATION

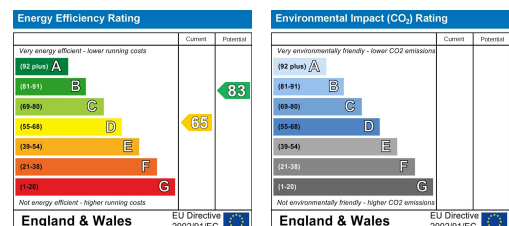
Convenient access into Staines, London and Heathrow Airport with Ashford Town Centre and Station less than a mile away.



Approximate Gross Internal Area 894 sq ft - 83 sq m
Ground Floor Area 575 sq ft - 53 sq m
First Floor Area 319 sq ft - 30 sq m



Although Pink Plan Ltd ensures the highest level of accuracy, measurements of doors, windows and rooms are approximate and no responsibility is taken for error, omission or misstatement. These plans are for representation purposes only as defined by RICS code of measuring practice. No guarantee is given on total square footage of the property within this plan. The figure icon is for initial guidance only and should not be relied on as a basis of valuation.



It is our aim to provide particulars that are both accurate and reliable but they are not guaranteed and would not form part of any offer or contract. Please contact us if you require clarification and we would be happy to assist. Please also note that the appliances and heating system have not been tested and therefore, no warranties can be given as to their condition.