

9 Bishops Court, Wolsey Road, Sunbury-On-Thames, TW16 7TW



Asking Price £200,000 Leasehold



A spacious and modern 1 bedroom purpose built flat on the second floor of a small development. In excellent condition with allocated parking close to Sunbury Cross shopping centre and station. The M3 is also just minutes away providing easy access to the M25 and Heathrow Airport.

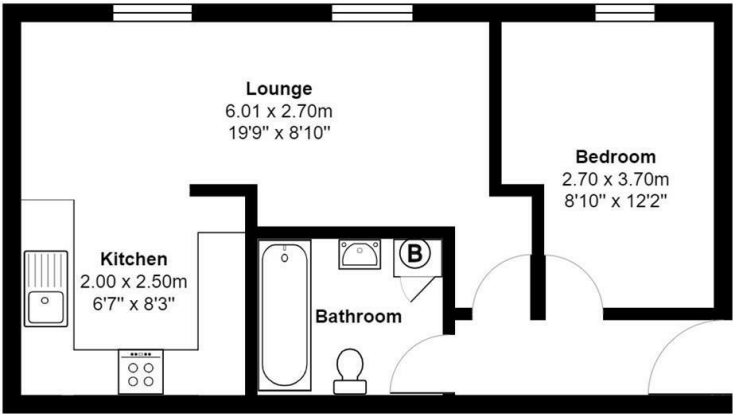
9 Bishops Court, Wolsey Road, Sunbury-On-Thames, TW16 7TW

For Sale

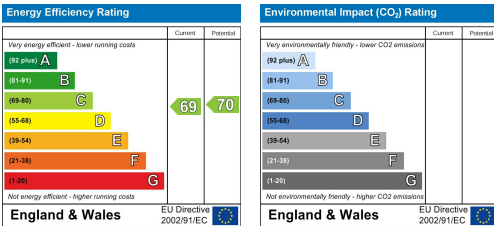
A splendid 1 bedroom purpose built modern second floor flat with the benefit of double glazing, Central heating and fitted carpets throughout. The accommodation features an entrance hall with doors to a good-sized bedroom, contemporary bathroom and a spacious open plan lounge leading into a modern fitted kitchen. Long Lease and No Forward Chain.

Location

Situated in a good residential area a few minutes from Sunbury train station and local amenities. Kingston upon Thames is also close to hand and access to both the M3 and M25 motorways.



Total Area: 43.0 m² ... 463 ft²



It is our aim to provide particulars that are both accurate and reliable but they are not guaranteed and would not form part of any offer or contract. Please contact us if you require clarification and we would be happy to assist. Please also note that the appliances and heating system have not been tested and therefore, no warranties can be given as to their condition.