

## 34 Littleton Road, Ashford, TW15 1UQ



**Asking Price £315,000 Leasehold**



**A splendid and well presented two bedroom ground floor maisonette with private garden and garage. Long Lease and No Forward Chain.**

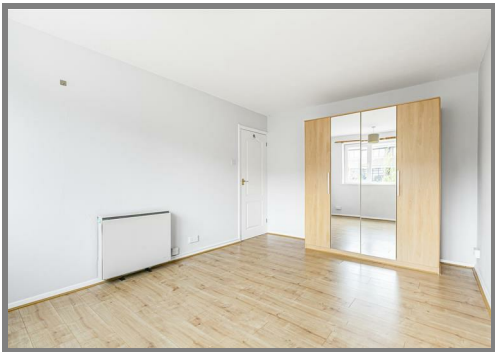
34 Littleton Road, Ashford, TW15 1UQ

FOR SALE

This modern ground floor maisonette features 2 good sized bedrooms, a modern bathroom with shower and a welcoming open plan lounge/modern kitchen with doors opening onto a private and secluded sunny garden. With a garage,, long lease and low outgoings a viewing is highly recommended.

LOCATION

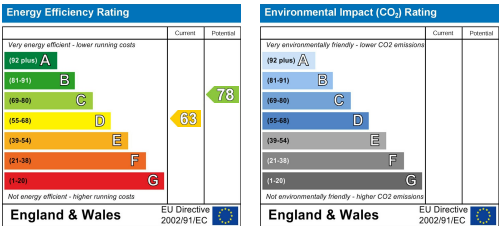
Quietly situated close to local shops and bus routes with both Ashford and Sunbury town centres close to hand. Staines and access to the M3 & M25 Motorways are also nearby together with Heathrow Airport and Ashford Hospital.



Approximate Gross Internal Area 622 sq ft - 58 sq m  
(Excluding Garage)  
Garage Area 128 sq ft - 12 sq m



Floor plan produced in accordance with RICS Property Measurement 2nd Edition, Although Pink Plan Ltd ensures the highest level of accuracy, measurements of doors, windows and rooms are approximate and no responsibility is taken for error, omission or misstatement. These plans are for representation purposes only and no guarantee is given on the total square footage of the property within this plan. The figure icon is for initial guidance only and should not be relied on as a basis of valuation.



It is our aim to provide particulars that are both accurate and reliable but they are not guaranteed and would not form part of any offer or contract. Please contact us if you require clarification and we would be happy to assist. Please also note that the appliances and heating system have not been tested and therefore, no warranties can be given as to their condition.