

159 Waverley Avenue, Whitton, Middlesex TW2 6DJ



Asking Price £595,000 Freehold

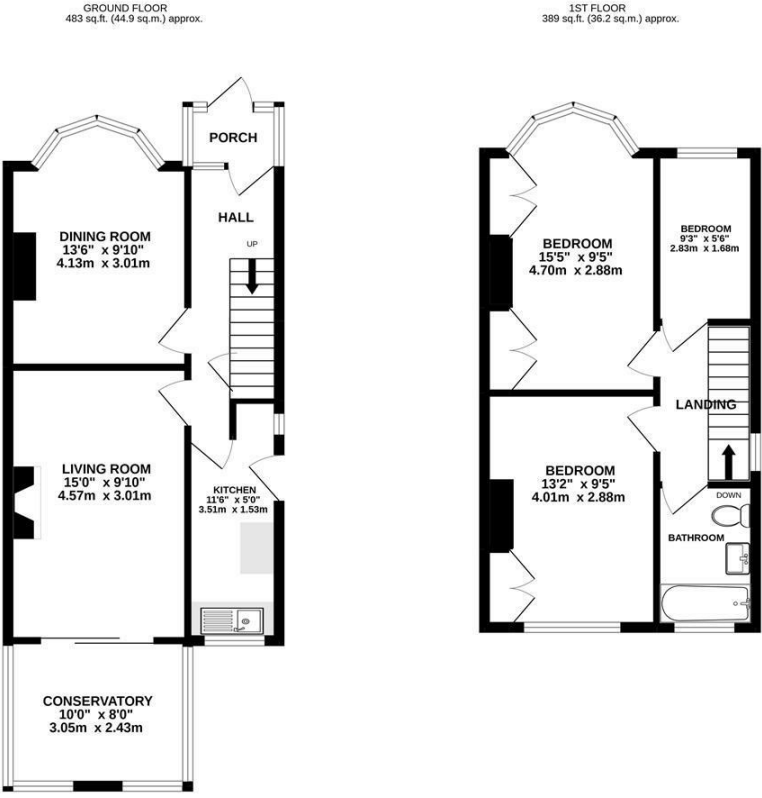


A BRIGHT AND SPACIOUS THREE BEDROOM SEMI DETACHED FAMILY HOME WITH A SOUTH FACING REAR GARDEN OFFERED FOR SALE IN NEED OF SOME UPDATING AT A REALISTIC ASKING PRICE ON THE POPULAR WOODLAWN DEVELOPMENT WITH THE BENEFIT OF NO ONWARD CHAIN.

159 Waverley Avenue, Whitton, Middlesex TW2 6DJ

For Sale:
Offered for sale at a realistic asking price this bright and airy three bedroom semi detached family home offers any interested purchaser an excellent opportunity to remodel and redesign the accommodation to an individual specification. Features include two separate reception rooms, kitchen, conservatory and upstairs three bedrooms and bathroom/wc. Outside the front garden provides off road parking with a side driveway leading to a detached garage and the rear garden has a sunny southerly aspect and is laid mainly to lawn with a greenhouse. Benefits include double glazing and gas central heating, an early viewing is highly recommended to appreciate the potential of this fine property.

Location:
Situated on a tree lined residential road which forms part of the popular Woodlawn development less than 1 mile from Whitton High Street with its buys shops, cafes and restaurants. Twickenham town centre with its more comprehensive facilities is also close to hand.



Energy Efficiency Rating		Current	Potential
Very energy efficient - lower running costs			
(92 plus)	A		
(81-91)	B		
(69-80)	C		
(55-68)	D		79
(39-54)	E	55	
(21-38)	F		
(1-20)	G		
Not energy efficient - higher running costs			
England & Wales		EU Directive 2002/91/EC	

It is our aim to provide particulars that are both accurate and reliable but they are not guaranteed and would not form part of any offer or contract. Please contact us if you require clarification and we would be happy to assist. Please also note that the appliances and heating system have not been tested and therefore, no warranties can be given as to their condition.