



36 Sirius Apartments
Pentrechwyth, Swansea, SA1 7GA
£1,000 PCM

2 1 1 c



36 Sirius Apartments

Pentrechwyth, Swansea, SA1 7GA

A 2 BEDROOM FURNISHED MAISONETTE with GOOD TRANSPORT LINKS TO THE CITY CENTRE & UNIVERSITY BAY CAMPUS

This Modern 2 Bedroom Maisonette is Located on the Fourth Floor of the Sirius Apartment Building at the Popular Copper Quarter Development which is located next to the Swansea.Com Stadium and Morfa Retail Park. Lift access the Entrance of the property leads to the Family Bathroom, the Second Double Bedroom, and the Master Bedroom which has an En Suite Shower Room and access to a Decked Balcony with views of The Liberty Stadium and The River Tawe. On the second floor there is a Lounge Dining Room which is Open Plan to a Fitted Kitchen with Fridge Freezer and Washer Dryer. Other benefits to include Allocated Parking for Two Cars

AVAILABILITY IS IMMEDIATE and FOR VIEWINGS APPOINTMENTS PLEASE CALL SMITHS LETTINGS COUNCIL TAX BAND D

Bedroom 1

16'3" x 9'4" (4.954 x 2.855)

Bedroom 2

11'2" x 9'4" (3.421 x 2.866)

Bathroom

6'10" x 5'6" (2.105 x 1.688)

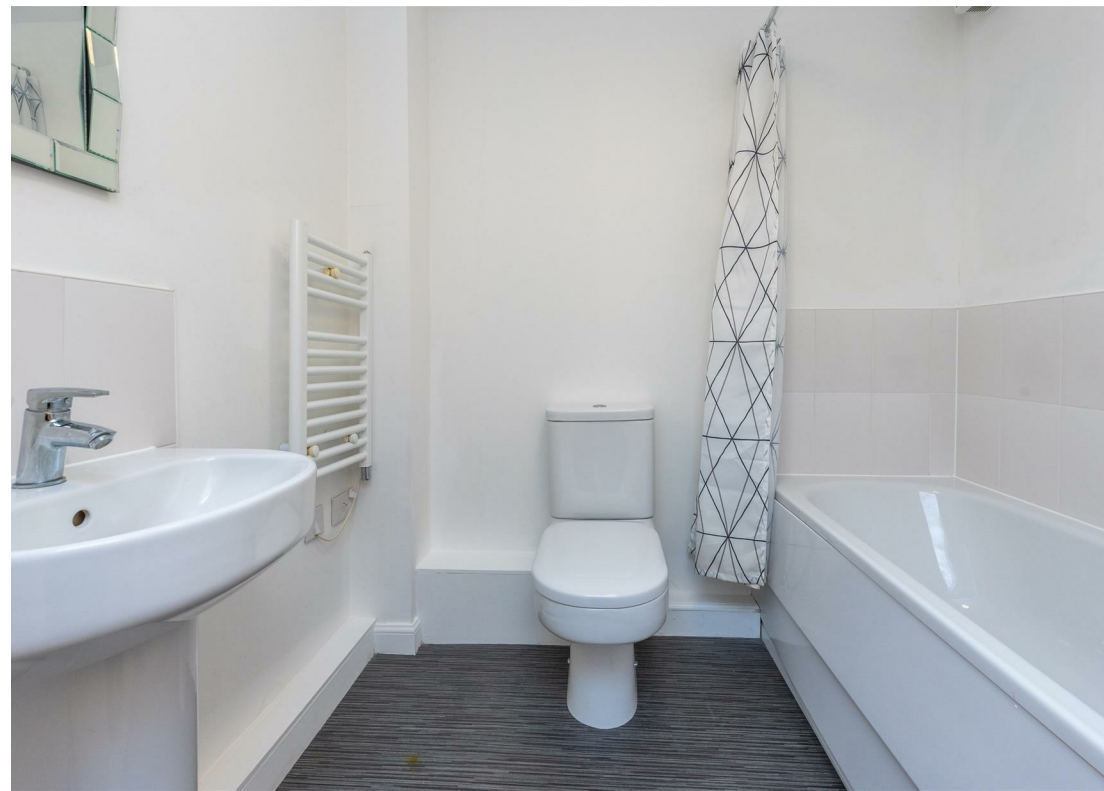
En Suite Shower Room

5'6" x 5'3" (1.693 x 1.603)

Lounge/Kitchen

25'1" x 16'7" (7.650 x 5.076)



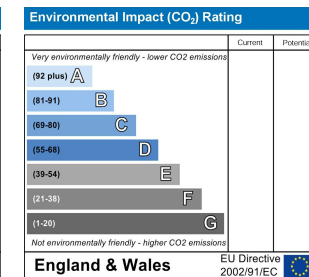
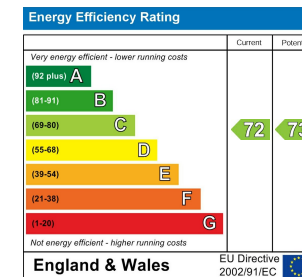


Floor Plan

Area Map



Energy Efficiency Graph



Viewing

Please contact us on 01792 465822 if you wish to arrange a viewing appointment for this property or require further information.

Smiths Homes endeavour to maintain accurate depictions of properties in Virtual Tours, Floor Plans and descriptions, however, these are intended only as a guide and purchasers must satisfy themselves by personal inspection.

Unit 4, 270 Cockett Road, Swansea, SA2 0FN
 T: 01792 465822 E: info@smithslettings.com W: www.smithshomes.com