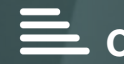




7 Tabernacle Street
Landore, Swansea, SA1 2JQ
£750 PCM



7 Tabernacle Street Landore, Swansea, SA1 2JQ

A 2 BEDROOM MID TERRACE FAMILY HOME which has been MODERNISED and is OFFERED TO LET UNFURNISHED

This Traditional Mid Terrace family home is located in a quiet cul de sac opposite The Swansea.Com Football Stadium and Morfa Retail Park and with a Bus Stop at the end of the street providing a direct route to the City Centre. From the Entrance Hall there is a Spacious Lounge/Dining Room which leads to a Modern Fitted Kitchen with an Integrated Oven and Gas Hob. From the Kitchen there is Rear Access to an Enclosed Back Garden. The Two Bedrooms are located on the First Floor along with the Family Bathroom which has an Over Bath Shower. Additional benefits include Gas Central Heating and the property has recently been redecorated throughout with replacement carpets.

AVAILABLE NOW with VIEWINGS DURING THE AFTERNOON ON THE 8TH OF MAY FOR APPOINTMENTS PLEASE CALL SMITHS LETTINGS
COUNCIL TAX BAND B

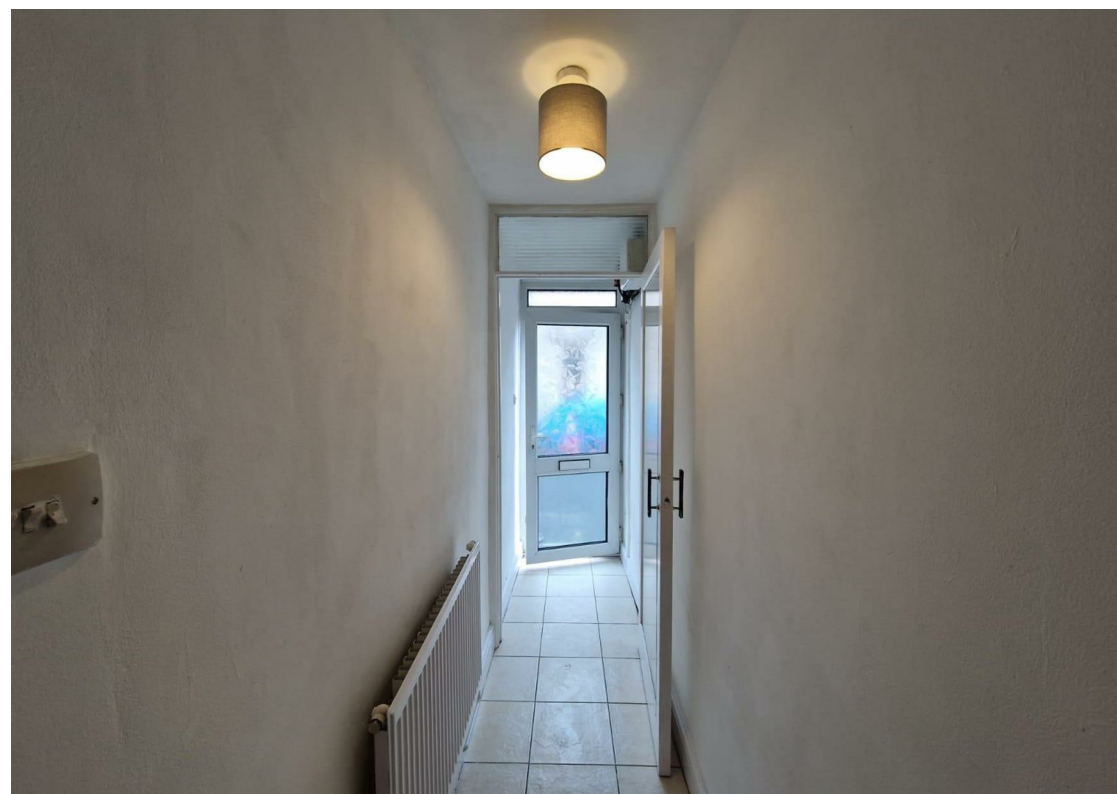
Lounge
20'11" x 10'7" (6.395 x 3.246)

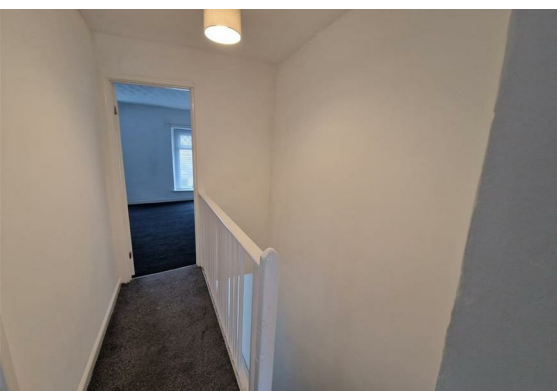
Kitchen
10'4" x 7'0" (3.167 x 2.140)

Bathroom
10'4" x 7'0" (3.174 x 2.142)

Bedroom 1
14'4" x 11'11" (4.382 x 3.642)

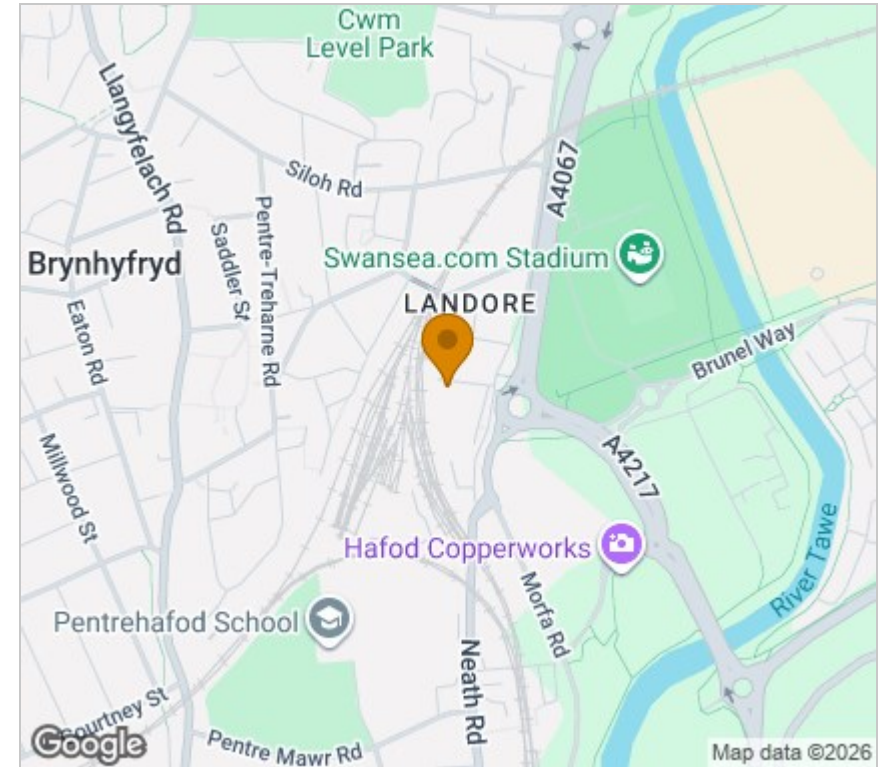
Bedroom 2
8'8" x 8'5" (2.655 x 2.581)



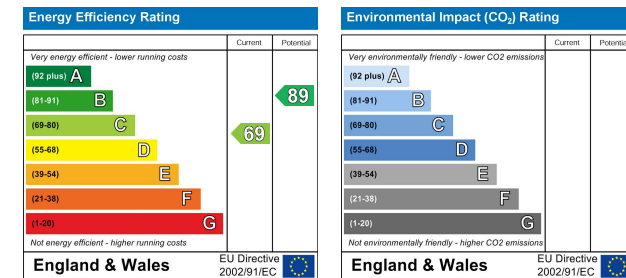


Floor Plan

Area Map



Energy Efficiency Graph



Viewing

Please contact us on 01792 465822 if you wish to arrange a viewing appointment for this property or require further information.

Smiths Homes endeavour to maintain accurate depictions of properties in Virtual Tours, Floor Plans and descriptions, however, these are intended only as a guide and purchasers must satisfy themselves by personal inspection.

Unit 4, 270 Cockett Road, Swansea, SA2 0FN
 T: 01792 465822 E: info@smithslettings.com W: www.smithshomes.com

