



17 The Bay

Meridian Wharf, Marina, SA1 1PG

£1,250 PCM

 2  1  1  c



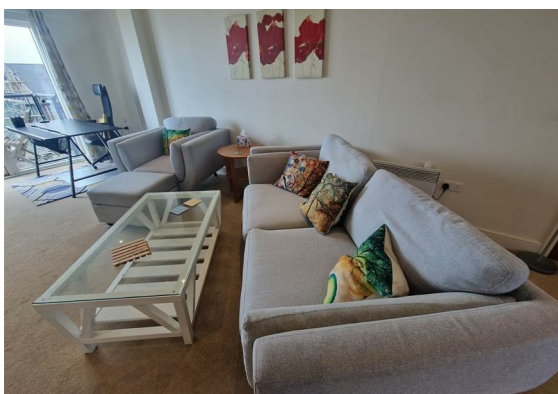
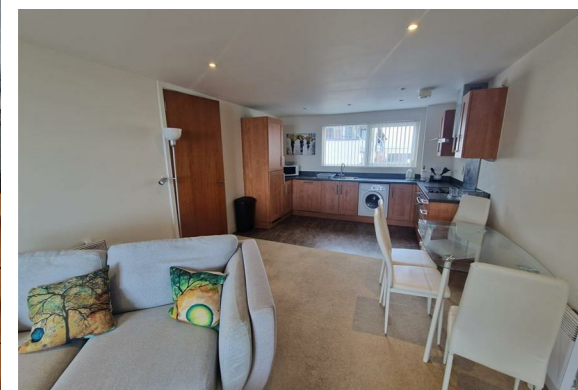
17 The Bay

Meridian Wharf, Marina, SA1 1PG

A FULLY FURNISHED 2 BEDROOM APARTMENT with a SEAFRONT LOCATION and UNINTERRUPTED SEA VIEWS in addition to ALLOCATED BASEMENT PARKING

This Modern 2 Bedroom Apartment is located in Swansea's Maritime Quarter and within close proximity of Main Transport Routes to both Swansea University Bay Campus and Swansea University Singleton Campus. With lift access, the Main Entrance opens into a Hallway which leads to an Open Plan Fitted Kitchen/Lounge with Patio Doors opening onto a Balcony with magnificent views of Swansea Bay and the Beach. The Fitted Kitchen has Integrated Appliances and the Bathroom has an Overbath Shower. Both Bedrooms are Doubles with the Main Bedroom having a Walk In Dressing Room. The location is also excellent for access to the City Centre and please note that this property does not have an En-Suite Shower Room.

AVAILABILITY IS IMMEDIATE WITH VIEWINGS FROM THE 30TH OF JULY FOR APPOINTMENTS PLEASE CALL SMITHS LETTINGS
COUNCIL TAX BAND E



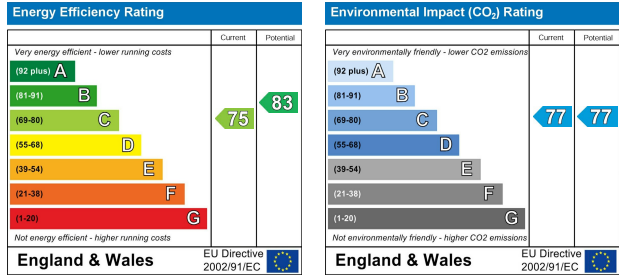


Floor Plan

Area Map



Energy Efficiency Graph



Viewing

Please contact us on 01792 465822 if you wish to arrange a viewing appointment for this property or require further information.

Smiths Homes endeavour to maintain accurate depictions of properties in Virtual Tours, Floor Plans and descriptions, however, these are intended only as a guide and purchasers must satisfy themselves by personal inspection.

Unit 4, 270 Cockett Road, Swansea, SA2 0FN
T: 01792 465822 E: info@smithslettings.com W: www.smithshomes.com

