



1 Bedroomed Modern open plan flat in Courtyard setting.
Available from July

Property description

VIEWINGS AND PROPERTY NOT AVAILABLE UNTIL JULY

Communal entrance hall with fob access

Stairs to first floor

Entrance door to lobby, with storage cupboard with all rooms off

Living space / kitchen/ A range of kitchen base units and worktops with fitted oven, hob and hood. Space for under counter Fridge, Freezer and Washing machine. Stainless Steel sink
401cm x 763cm

Main bedroom 300cm x 368cm

Shower room, with toilet and sink.
Electric heating throughout

Outside:

Shared courtyard area

Private drying area / garden area for Foxglove garden residents

Bin store

Disclaimer

All measurements are approximate. We have not checked the serviceability of any appliances, fixtures or utilities (i.e. water, electricity, gas) which may be included in the sale. We cannot guarantee building regulations or planning permission has been approved and all prospective purchasers should satisfy themselves on these points prior to entering into a contract. Consumer Protection from Unfair Trading Regulations 2008. The Agent has not tested any apparatus, equipment, fixtures and fittings or services and so cannot verify that they are in working order or fit for the purpose. A Buyer is advised to obtain verification from their Solicitor or Surveyor. References to the Tenure of a Property are based on information supplied by the Seller. The Agent has not had sight of the title documents. A Buyer is advised to obtain verification from their Solicitor. Items shown in photographs are NOT included unless specifically mentioned within the sales particulars. They may

however be available by separate negotiation. Buyers must check the availability of any property and make an appointment to view before embarking on any journey to see a property.

Letting terms / charges+

If you like a property and wish to proceed with it, you will be required to pay a holding deposit of up to 1 weeks rent (generally £100) to reserve the property whilst you complete the necessary application paperwork and provide ID and additional information

If you are not successful with your application as a result of you providing incorrect information such as earnings or failure to disclose issues in your credit history and subsequently not in a position to move forward with the tenancy within 14 days, this holding deposit will be forfeited.

If the landlord withdraws the property for any reason other than your unsuitability then the holding deposit will be returned to you.

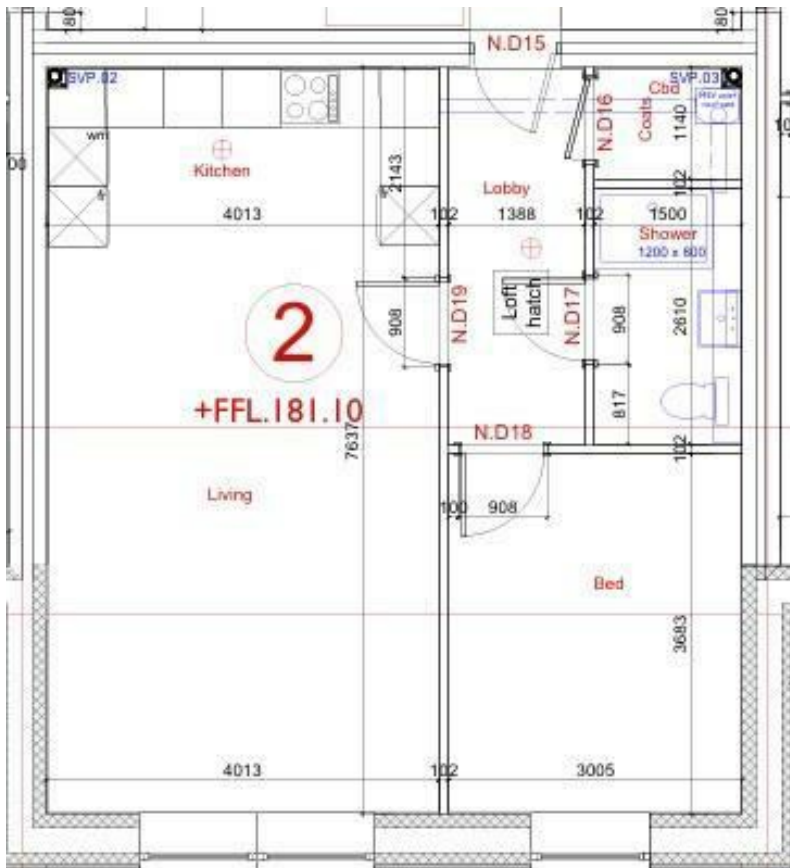
Other fees apply during the tenancy such as loss of keys, changes to the agreement, rent arrears, and early end of tenancy. These will be explained before you sign your tenancy agreement.

The only charges other than the holding deposit will be rent (1 month in advance) and security deposit (equivalent to 5 weeks rent).

Your deposit will be held in trust by the DPS
<https://www.depositprotection.com/>

Artists Impressions

All images are used for illustrative purposes only and are representative only. They may not be the same as the actual home you purchase and the specification may differ. Images may be of a slightly different model of home and may include optional upgrades and extras which involve additional cost. Individual features such as windows, brick, carpets, paint and other material colours may vary and also the specification of fittings may vary. Any furnishings and furniture are not included in any sale.



Energy Efficiency Rating		
	Current	Potential
Very energy efficient - lower running costs		
(92 plus) A		
(81-91) B		
(69-80) C	70	70
(55-68) D		
(39-54) E		
(21-38) F		
(1-20) G		
Not energy efficient - higher running costs		
EU Directive 2002/91/EC		
England & Wales		
Environmental Impact (CO ₂) Rating		
	Current	Potential
Very environmentally friendly - lower CO ₂ emissions		
(92 plus) A		
(81-91) B		
(69-80) C		
(55-68) D		
(39-54) E		
(21-38) F		
(1-20) G		
Not environmentally friendly - higher CO ₂ emissions		
EU Directive 2002/91/EC		
England & Wales		

