



Selbon

Residential sales & lettings

Denton Way, Frimley, Camberley,
Surrey, GU16 8UQ

Offers over £425,000 Freehold



01252 979300

Selbonproperty.co.uk

- Three Bedroom Semi-Detached Family Home
- Downstairs WC
- Bedroom One and Two With Fitted Wardrobes
- Gas Central Heating and UPVC Double Glazing
- Well Regarded Schools Nearby
- Driveway For Multiple Vehicles
- Dual Aspect Kitchen/Dining Room With Fitted Appliances
- Generous South Westerly Facing Rear Garden
- Close To Local Supermarket, Shops And Other Amenities
- Commuter Links Include Frimley Train Station And Nearby M3 Junction Nearby

Selbon Estate Agents are delighted to welcome to the market this well presented three bedroom semi-detached family home in Frimley.

This charming home is located close to Frimley Park Hospital and has a range of nearby amenities including a supermarket, several public houses and Frimley Train Station. Nearby you'll also find the highly sought after Ravenscote Junior School and Tomlinscote Secondary School and The Grove Primary School.

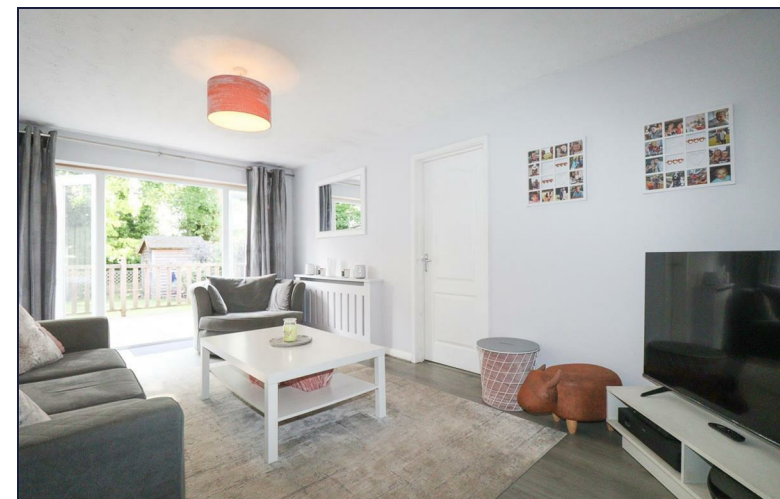
To the front of the home there is a spacious paved driveway for multiple vehicles, as well as a gate to the rear garden. Stepping inside you enter a hallway with access to the downstairs cloakroom, living room, under stairs storage cupboard and stairs to the first floor.

The living room is over 17 feet long and benefits from French doors into the rear garden. The living room also gives access to a generous dual aspect, modern kitchen/dining room. The kitchen includes an integrated dishwasher and washing machine, oven and four burner gas hob with overhead extractor fan.

Stepping upstairs, the landing gives access to three bedrooms, family bathroom, and the airing cupboard. Bedroom One and Two are both rear aspect double bedrooms with fitted wardrobes. The family bathroom is tiled with bathtub with a wall mounted shower, wash basin, WC, extractor fan and window.

The south westerly rear garden is approximately 70ft in length and benefits from enclosed decking, leading down to a rear lawn and storage shed.

Other notable features include: UPVC double glazed window and gas central heating.



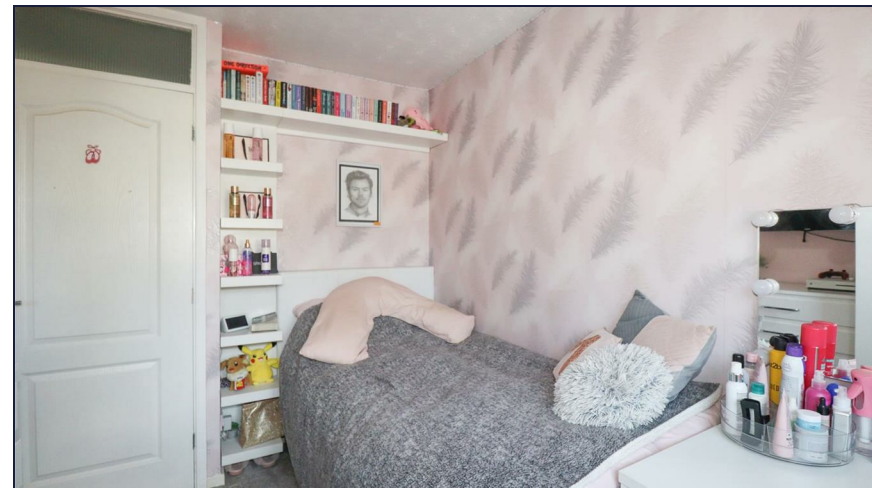
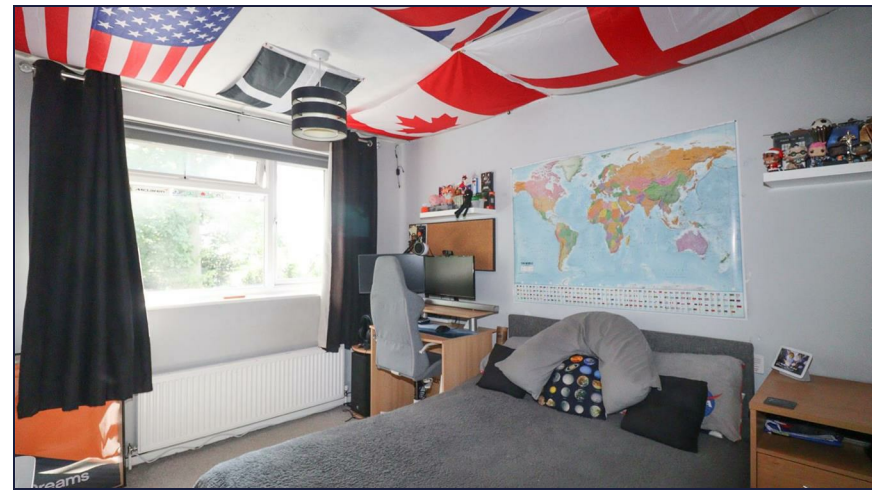
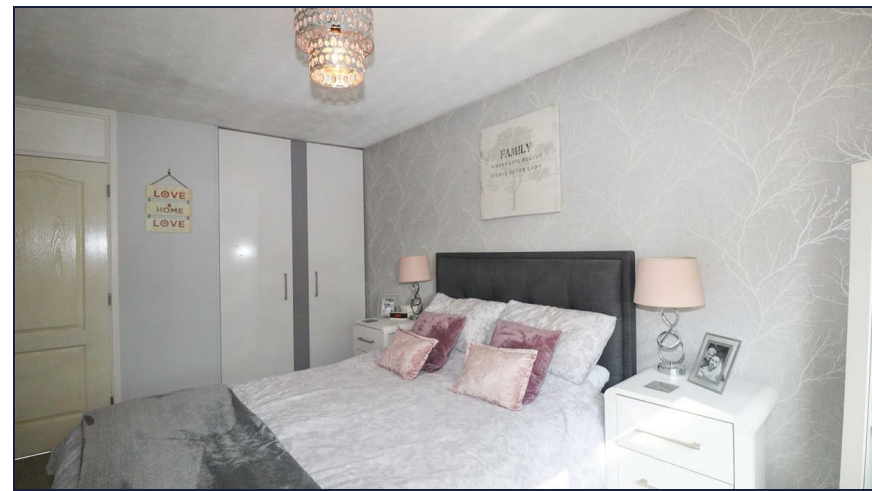


15:59

BOSCH

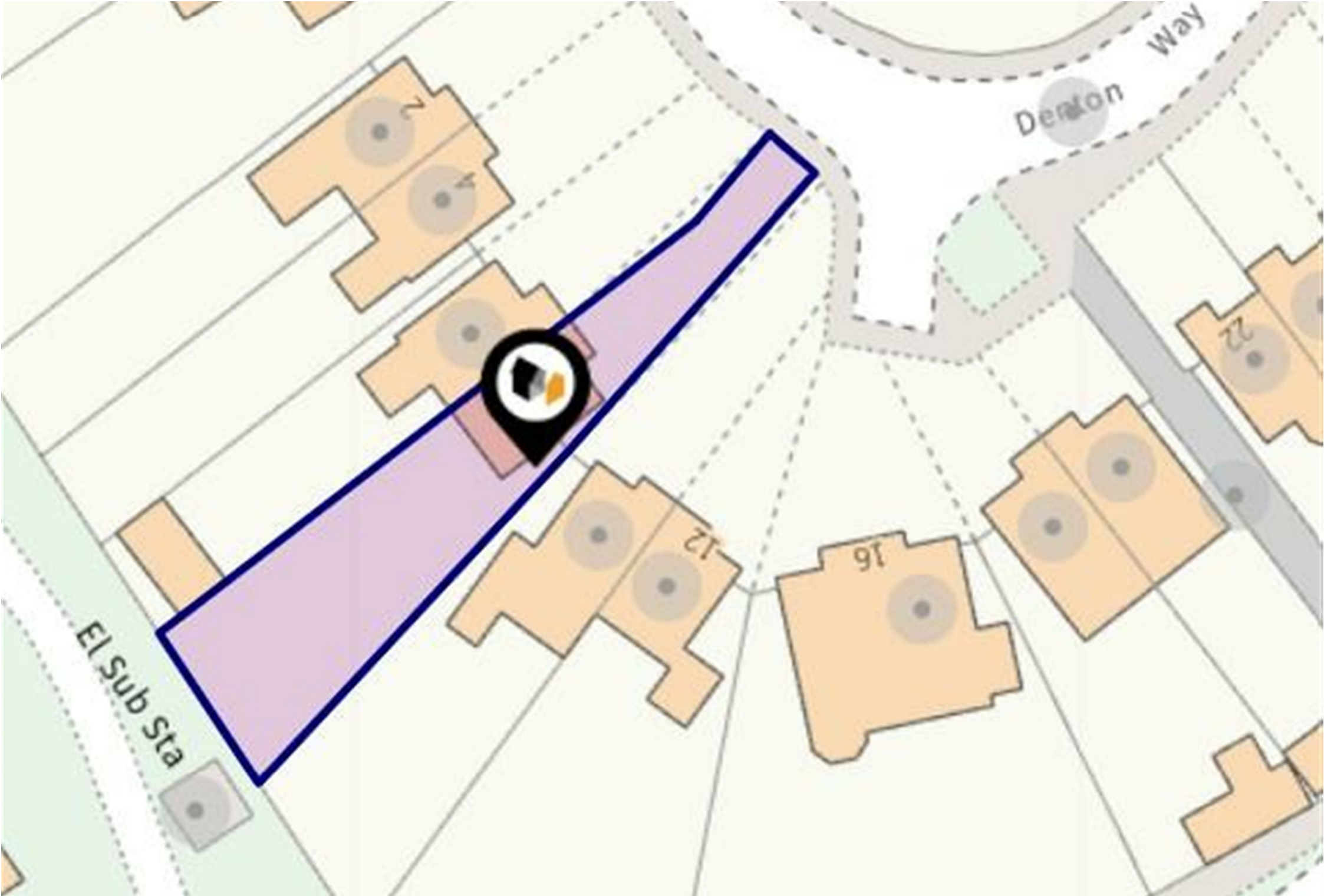
Hisense

Clear View Window 1.1x
18kg Drum Capacity
Self-Cleaning
10 Wash Programs
15 Wash Programs

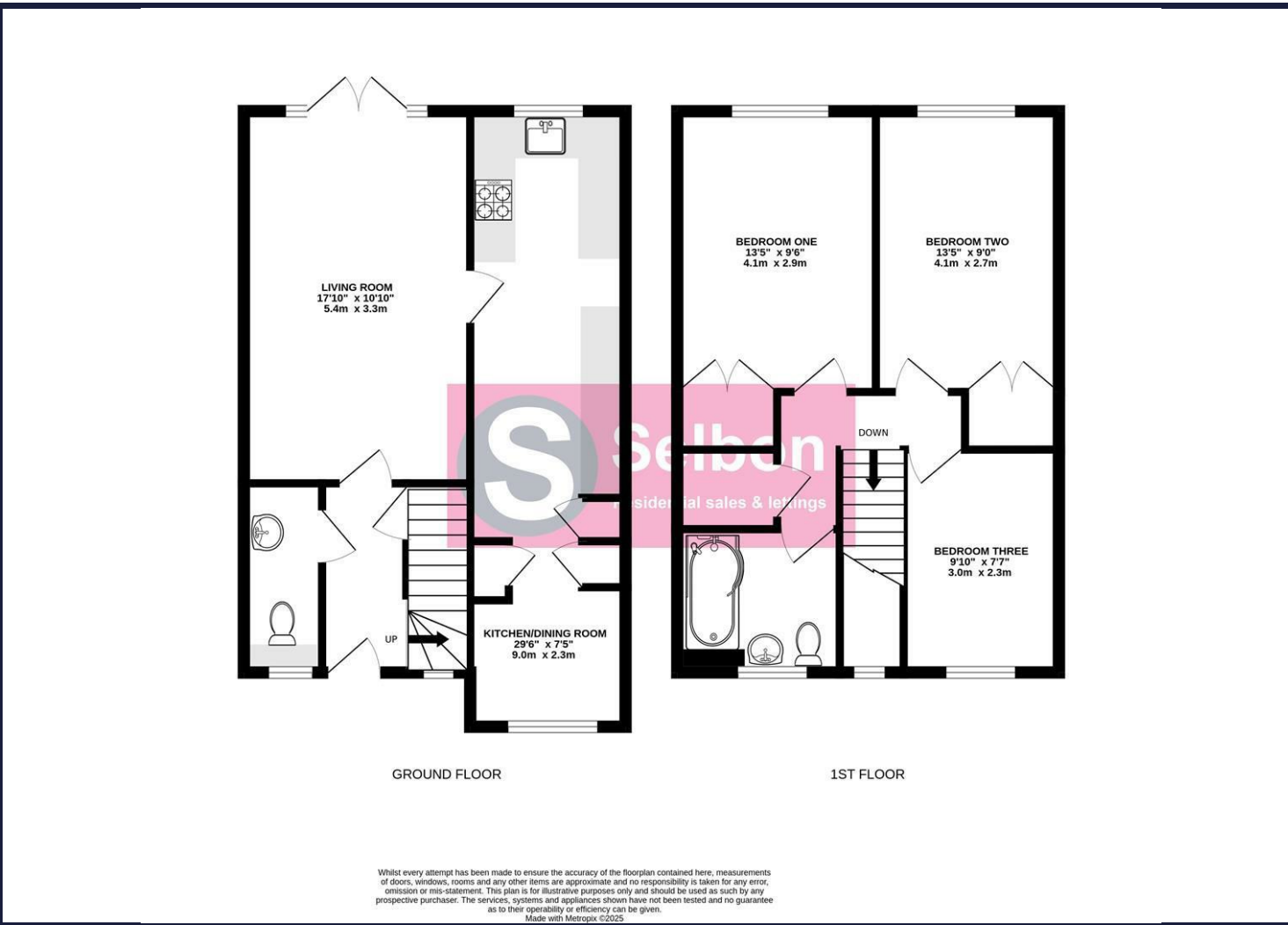




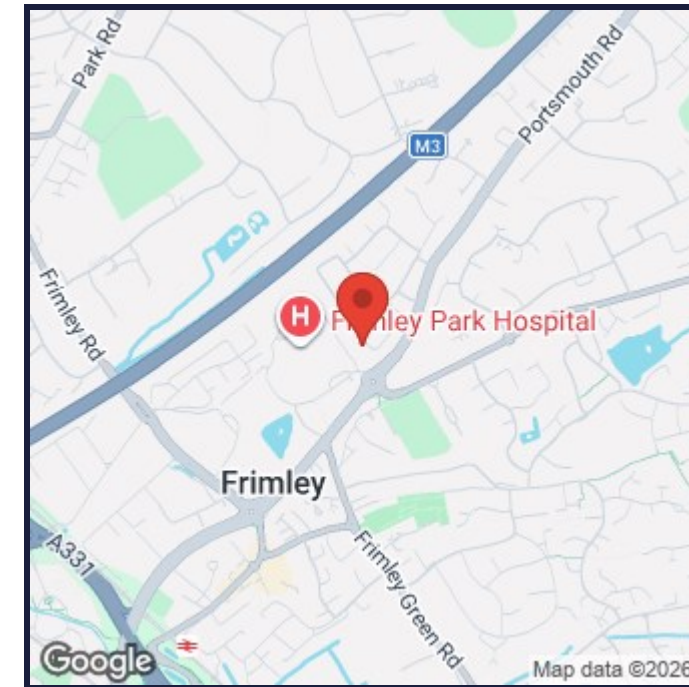




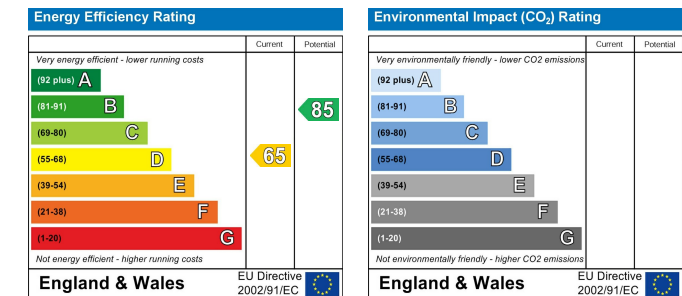
Floor Plans



Area Map



Energy Performance Graph



Viewing

For further information on this property or to arrange a viewing please contact Selbon Estate Agents on 01252 979300

We give notice that these particulars are produced in good faith and in accordance with the Consumer Protection from Unfair Trading Regulations 2008 (CPR). They are set out as a general guide only and do not constitute any part of a contract or warranty whatsoever. Intending purchasers should not rely on them as statements of representation of fact, but must satisfy themselves by inspection or otherwise as to their accuracy. No person in the employment of Selbon has any authority to make or give any representation or warranty whatever in relation to the property. A detailed survey has not been carried out nor have the services, heating systems, appliances or specific fittings been tested. Any photograph incorporated within these particulars shows only certain parts of the property and it must not be assumed that any contents or fixtures and fittings shown in the photographs are either included with the property or indeed remain in it. Room sizes shown and any floor plans should not be relied upon for carpets and furnishings. If there is any point which is of particular importance to you we will be pleased to check the information for you and confirm that the property remains available. This is particularly important if you are contemplating travelling some distance to view the property.

Council Tax Band: D

Selbon Property Services Ltd

Registered Office, 16 Levignen Close, Church Crookham, Fleet, Hampshire, GU52 0TW

Company Registration Number: 12108205 VAT Number: 370 7956 65

Tel: 01252 979300 Email: sales@selbonproperty.co.uk