



**Selbon**

Residential sales & lettings

Tarn Close, Farnborough,  
Hampshire, GU14 0RP

Guide price £375,000 Freehold



**01252 979300**  
Selbonproperty.co.uk

- Two Bedroom Semi-Detached Home
- Rear Aspect Living Room With Patio Doors Onto The Garden
- Low Maintenance Rear Garden With Side Access Gate
- Double Glazing And Gas Central Heating
- Close To Southwood Country Park
- Modern Kitchen With Fitted Appliances
- Wardrobes/Storage Cupboards In Both Bedrooms
- Driveway For A Couple Of Vehicles
- Ideal First Home Or Buy-To-Let Property
- Supermarket, Restaurants, Gym And Schools Nearby

Selbon Estate Agents are delighted to offer to the market this two bedroom semi-detached home, located within the popular Southwood area of Farnborough.

This home would make for an ideal first time purchase, downsize or buy-to-let property.

The current school catchment for the area includes: Southwood Infant School, Guillemont Junior School, Cove Junior School and Cove Secondary School.

Stepping inside, the hallway gives access into the kitchen, living room and stairs to the first floor. The front aspect kitchen offers a range of eye top and base level storage cupboards, stainless steel sink with drainer, oven with four burner gas hob with wall mounted extractor fan, fridge freezer and dishwasher. The rear aspect living room features a storage cupboard and patio doors onto the rear garden.

Upstairs there are two double bedrooms and a bathroom with panelled bath, wall mounted shower, wash basin and W.C.

The low maintenance rear garden is mainly artificial lawn with a patio area and a side access gate. To the side of the home there is a driveway which offers off road parking for a couple of vehicles.

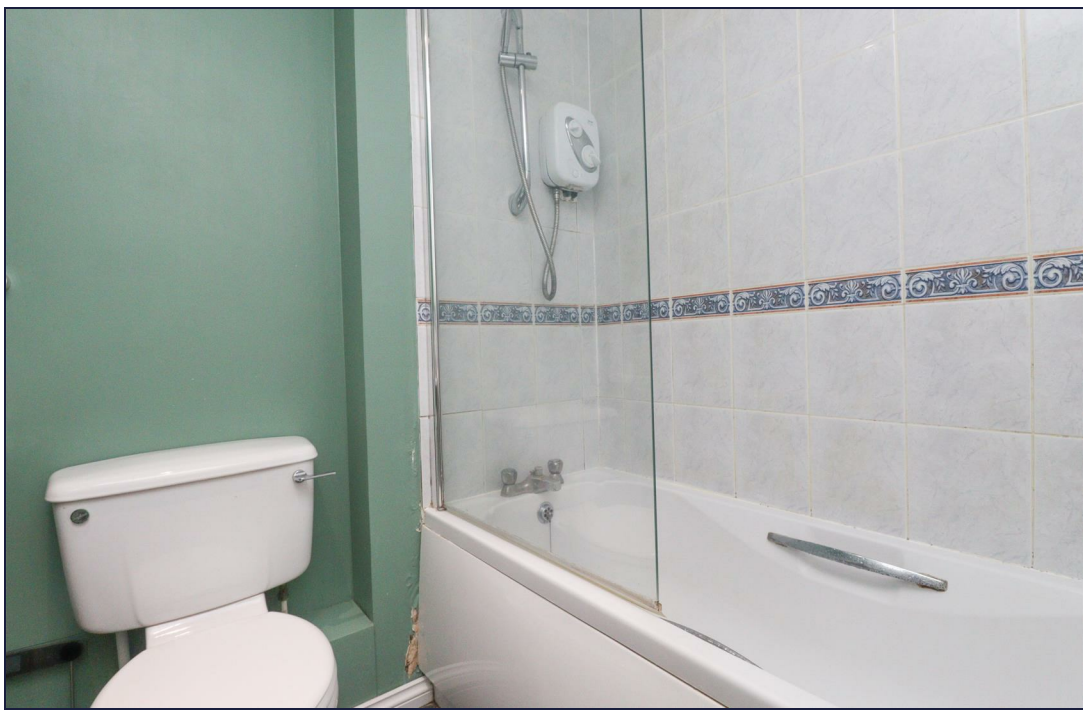
Other notable features include: Gas central heating and double glazing.

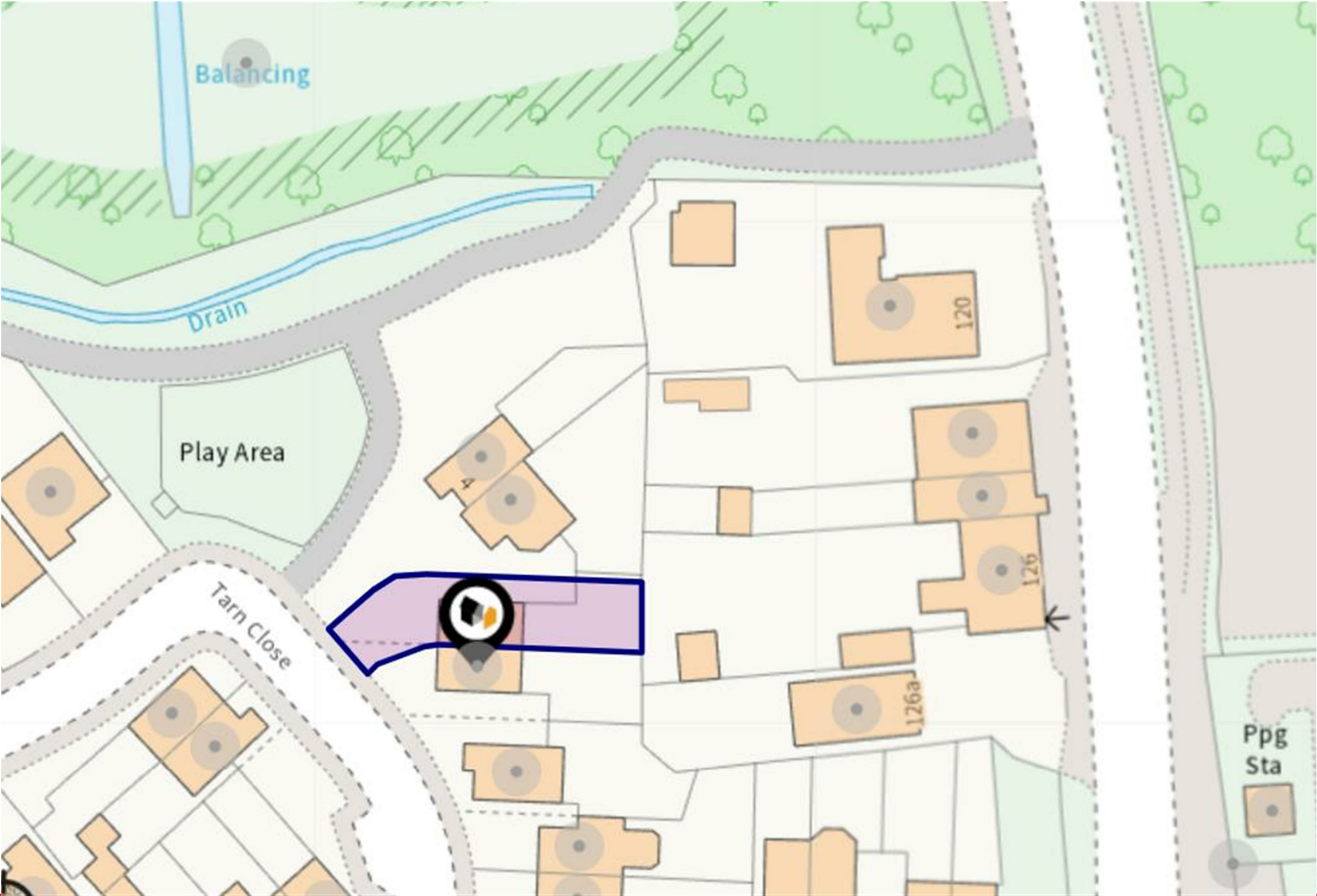
Within Southwood you'll find a Morrisons Supermarket, a café, several public houses and restaurants and a Nuffield Heath Fitness and Wellbeing Gym. Southwood Country Park is also nearby, popular amongst dog walkers and exercise enthusiasts. Also nearby there is a North and Southbound M3 junction, ideal for commuters.

Farnborough Town Centre is Approximately 2.1 miles away. He you'll find a range of shops, pubs and restaurants, as well as a retail park, several supermarkets, a cinema and Farnborough Main Train Station, popular amongst commuters for its mainline access into London Waterloo in approximately 36 minutes.









Balancing

Drain

Play Area

Tarn Close

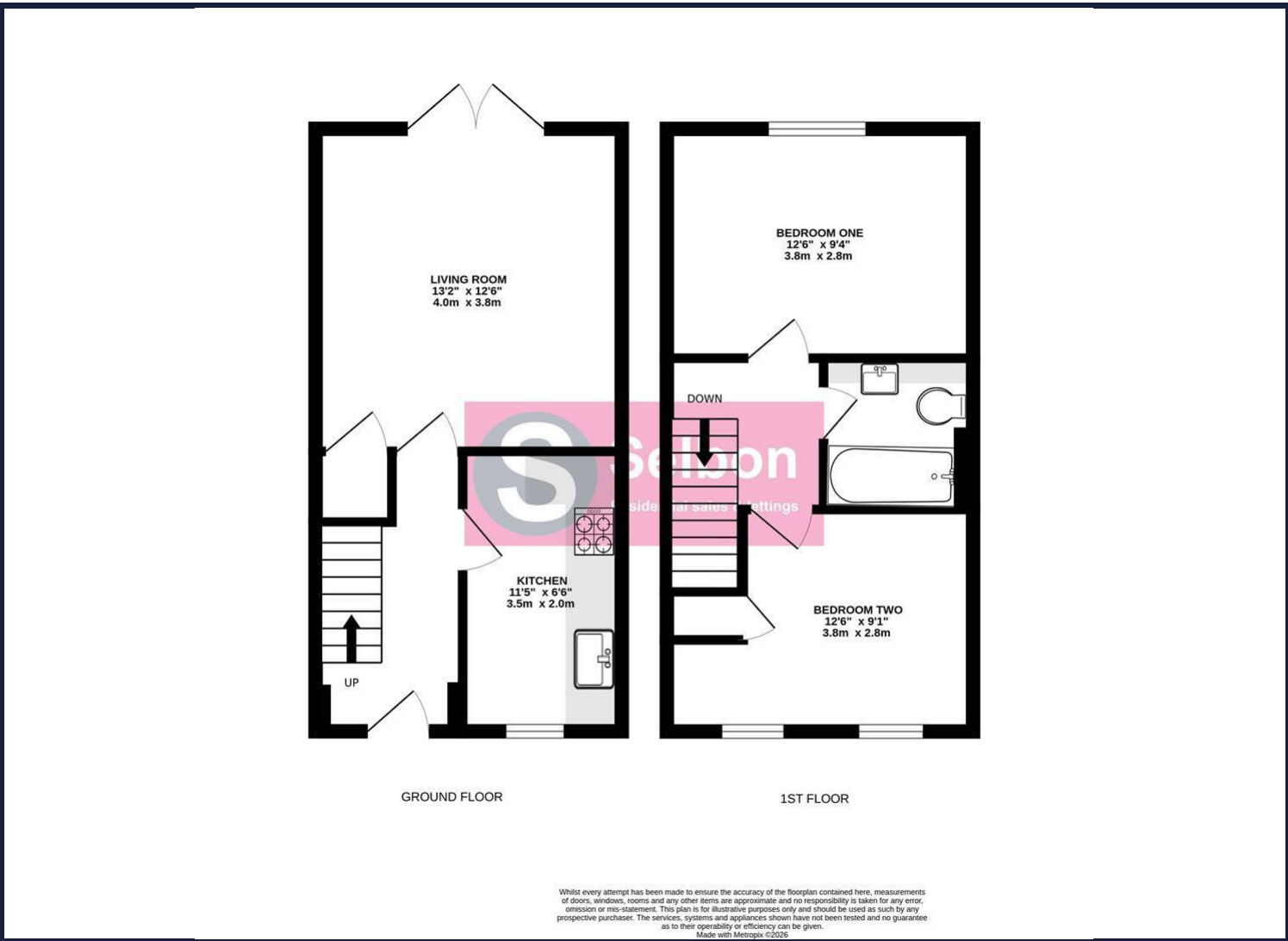
120

126

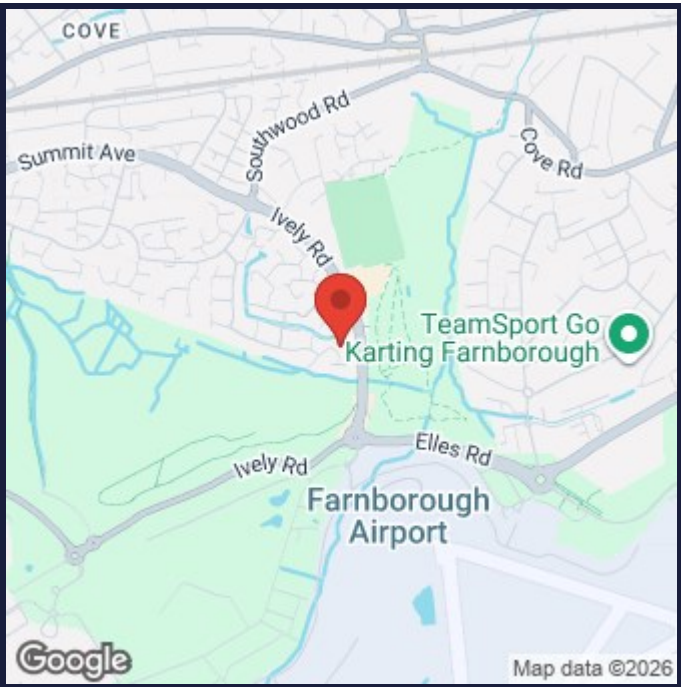
126a

Ppg Sta

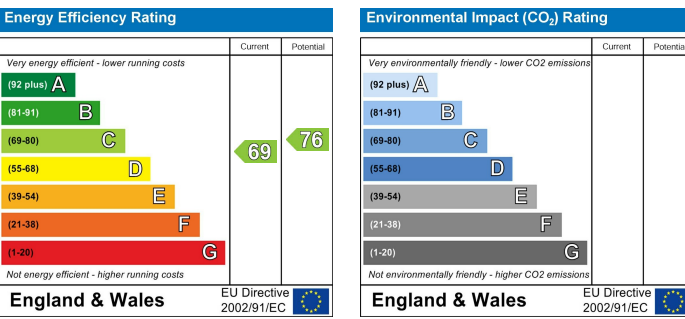
# Floor Plans



# Area Map



# Energy Performance Graph



# Viewing

For further information on this property or to arrange a viewing please contact Selbon Estate Agents on 01252 979300

# Council Tax Band: C

We give notice that these particulars are produced in good faith and in accordance with the Consumer Protection from Unfair Trading Regulations 2008 (CPR). They are set out as a general guide only and do not constitute any part of a contract or warranty whatsoever. Intending purchasers should not rely on them as statements of representation of fact, but must satisfy themselves by inspection or otherwise as to their accuracy. No person in the employment of Selbon has any authority to make or give any representation or warranty whatever in relation to the property. A detailed survey has not been carried out nor have the services, heating systems, appliances or specific fittings been tested. Any photograph incorporated within these particulars shows only certain parts of the property and it must not be assumed that any contents or fixtures and fittings shown in the photographs are either included with the property or indeed remain in it. Room sizes shown and any floor plans should not be relied upon for carpets and furnishings. If there is any point which is of particular importance to you we will be pleased to check the information for you and confirm that the property remains available. This is particularly important if you are contemplating travelling some distance to view the property.