



**Selbon**

Residential sales & lettings

Bechin Close, Church Crookham, Fleet,  
Hants, GU52 6DJ

Offers in excess of £350,000



**01252 979300**

[Selbonproperty.co.uk](http://Selbonproperty.co.uk)



- Modern End Of Terrace
- Refitted Kitchen
- 2 Double Bedrooms With Built In Wardrobes
- New Triple Glazed Windows
- Enclosed Garden With Insulated Garden Office
- Entrance Hall
- 14ft Lounge/Dining Room
- Refitted Bathroom
- Gas Radiator Heating With Combi Bolier
- 2 Allocated Parking Spaces

Selbon Estate Agents are delighted to offer this modern end of terrace home to the market, conveniently located in a cul de sac, on the ever popular Zebon Copse development, in Church Crookham.

The current vendors have lived in the property since 2004 and have thoughtfully modernised over the years with the home offered to the market in excellent decorative order throughout, making it an ideal first time, investment purchase or for those looking to downsize and have a lock and go home.

The most recent additions are triple glazed windows installed in 2024 and a detached insulated garden office, ideal for working from home or as a gym.

The property is accessed via a pathway leading to a covered entrance porch with a double glazed front door giving access to the entrance hall, which has stairs leading to the first floor landing, kitchen and lounge/dining room.

The refitted 9ft front aspect kitchen has a range of eye and base level storage units, work surfaces and some integrated appliances. The 14ft lounge/dining room has space for table and chairs and a triple glazed door to the rear garden.

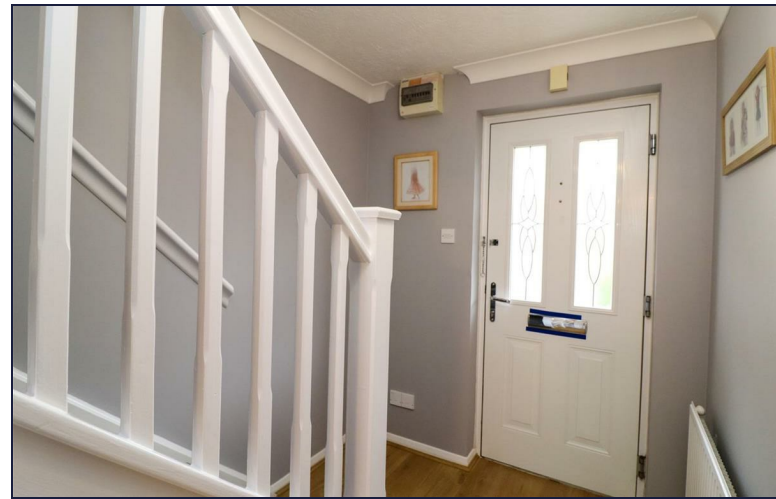
The first floor landing has access to the loft, there are doors to the main bedroom has two double built in wardrobes, the second bedroom has a built in bulkhead storage cupboard and there is a refitted bathroom with a white suite.

The property further benefits from gas radiator heating, triple glazed windows and a westerly facing rear garden with an insulated garden office and storage shed and there are two allocated parking spaces.

Zebon Copse has its own convenience store, a wealth of walking, running and cycling routes including the Basingstoke canal and a community centre. Fleet Town Centre, leisure facilities and sought after schools are all within a short drive.

There are excellent communication links including Fleet mainline railway station (Waterloo Line), as well as the M3, A3 and A30.

We highly recommend an early viewing to appreciate the avoid disappointment.

















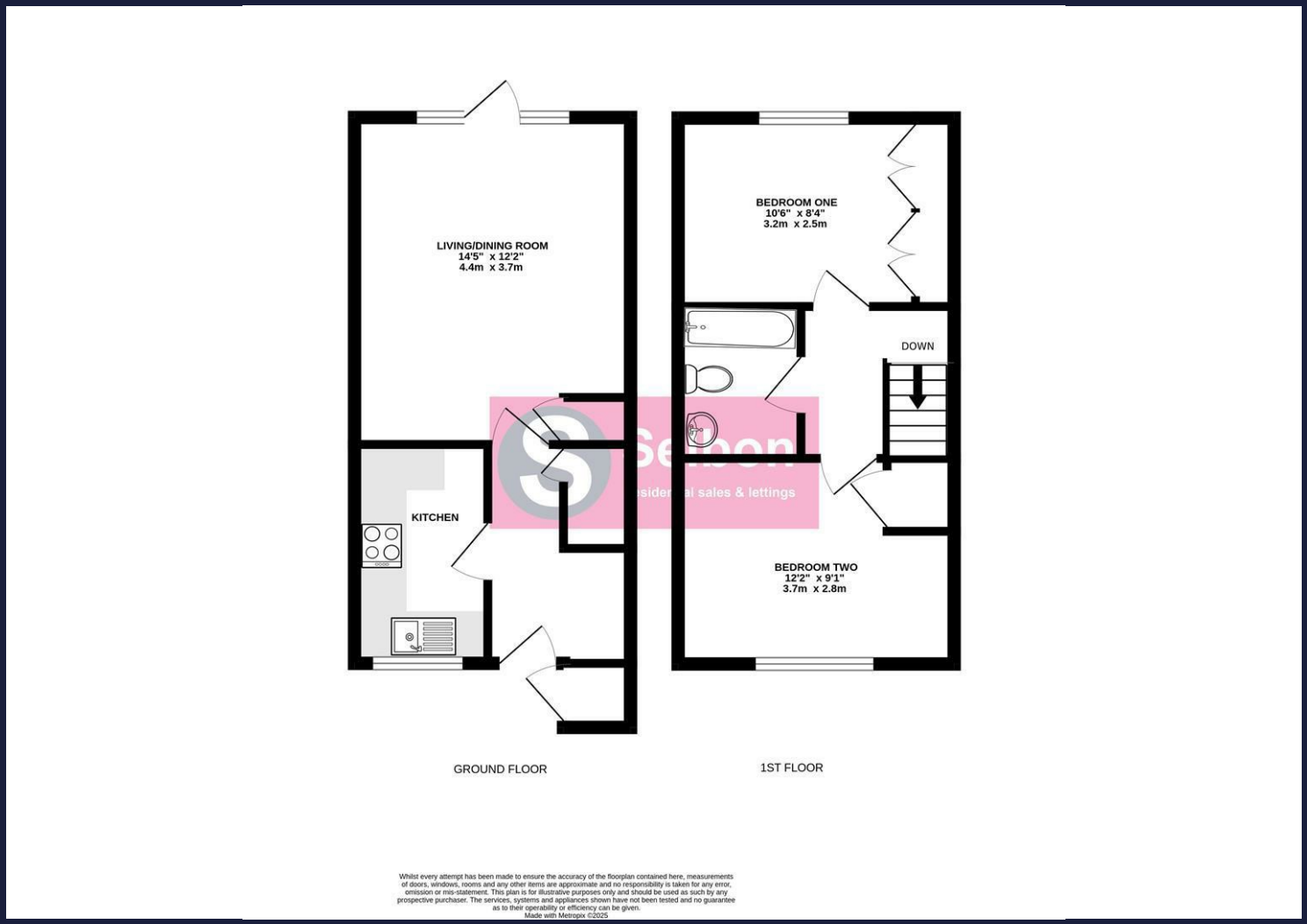




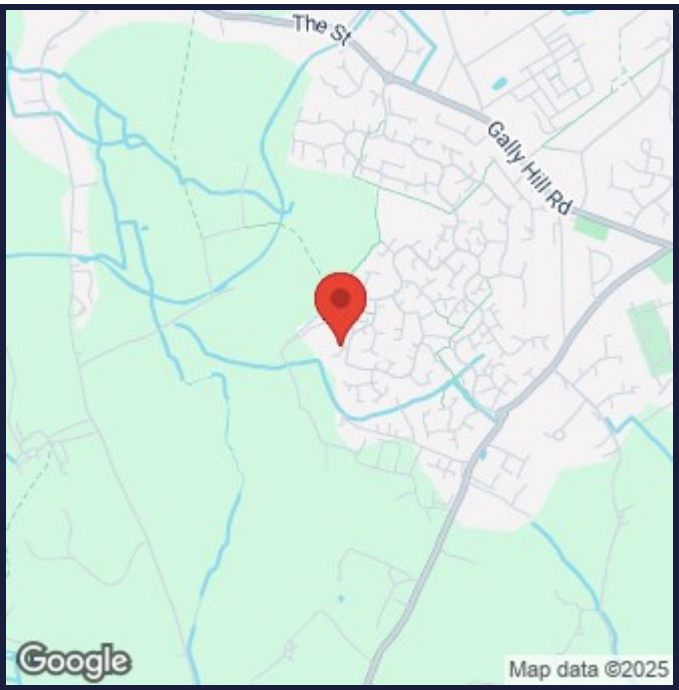




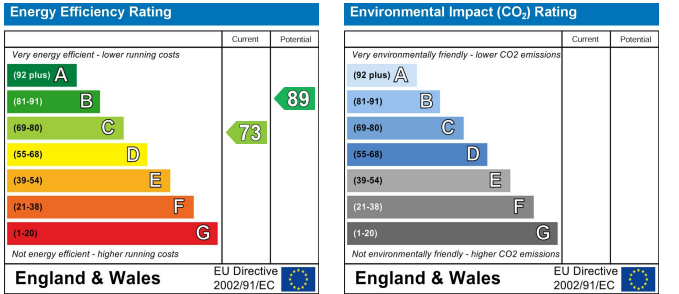
Floor Plans



Area Map



Energy Performance Graph



Viewing

For further information on this property or to arrange a viewing please contact Selbon Estate Agents on 01252 979300

We give notice that these particulars are produced in good faith and in accordance with the Consumer Protection from Unfair Trading Regulations 2008 (CPR). They are set out as a general guide only and do not constitute any part of a contract or warranty whatsoever. Intending purchasers should not rely on them as statements of representation of fact, but must satisfy themselves by inspection or otherwise as to their accuracy. No person in the employment of Selbon has any authority to make or give any representation or warranty whatever in relation to the property. A detailed survey has not been carried out nor have the services, heating systems, appliances or specific fittings been tested. Any photograph incorporated within these particulars shows only certain parts of the property and it must not be assumed that any contents or fixtures and fittings shown in the photographs are either included with the property or indeed remain in it. Room sizes shown and any floor plans should not be relied upon for carpets and furnishings. If there is any point which is of particular importance to you we will be pleased to check the information for you and confirm that the property remains available. This is particularly important if you are contemplating travelling some distance to view the property.

Council Tax Band: C