



Selbon

Residential sales & lettings

Tarn Close, Farnborough,
Hampshire, GU14 0RP

Guide price £375,000 Freehold



01252 979300
Selbonproperty.co.uk

- Two Bedroom Semi-Detached Home
- Rear Aspect Living Room With Patio Doors Onto The Garden
- Low Maintenance Rear Garden With Side Access Gate
- Double Glazing And Gas Central Heating
- Close To Southwood Country Park
- Modern Kitchen With Fitted Appliances
- Wardrobes/Storage Cupboards In Both Bedrooms
- Driveway For A Couple Of Vehicles
- Ideal First Home Or Buy-To-Let Property
- Supermarket, Restaurants, Gym And Schools Nearby

Selbon Estate Agents are delighted to offer to the market this two bedroom semi-detached home, located within the popular Southwood area of Farnborough.

This home would make for an ideal first time purchase, downsize or buy-to-let property.

The current school catchment for the area includes: Southwood Infant School, Guillemont Junior School, Cove Junior School and Cove Secondary School.

Stepping inside, the hallway gives access into the kitchen, living room and stairs to the first floor. The front aspect kitchen offers a range of eye top and base level storage cupboards, stainless steel sink with drainer, oven with four burner gas hob with wall mounted extractor fan, fridge freezer and dishwasher. The rear aspect living room features a storage cupboard and patio doors onto the rear garden.

Upstairs there are two double bedrooms and a bathroom with panelled bath, wall mounted shower, wash basin and W.C.

The low maintenance rear garden is mainly artificial lawn with a patio area and a side access gate. To the side of the home there is a driveway which offers off road parking for a couple of vehicles.

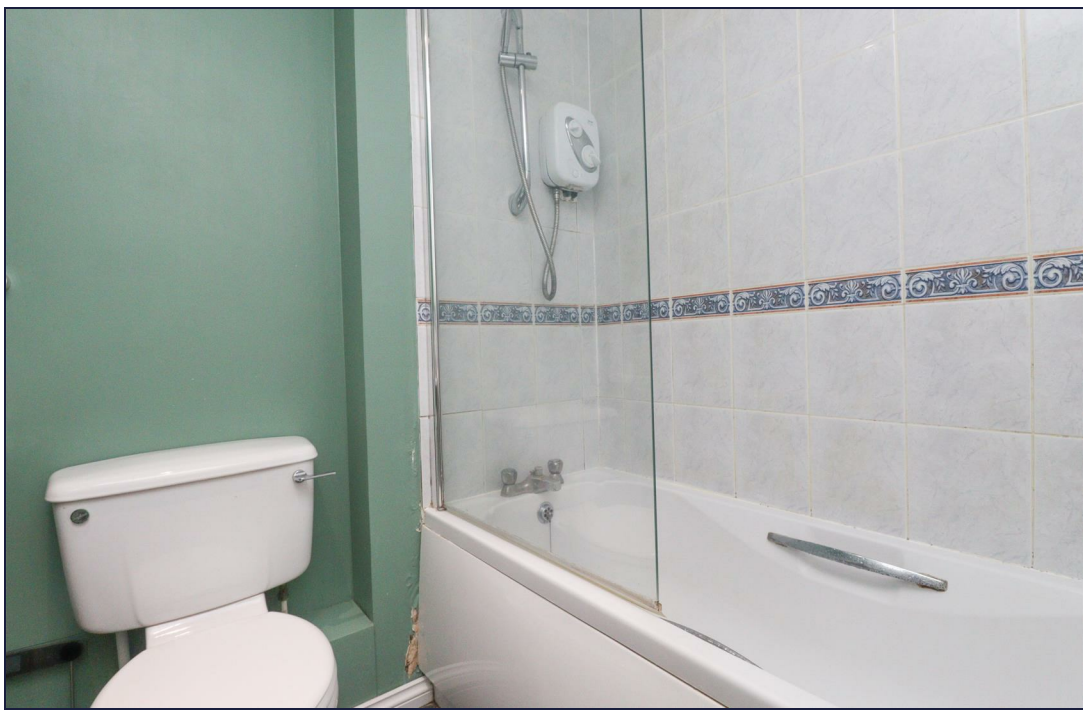
Other notable features include: Gas central heating and double glazing.

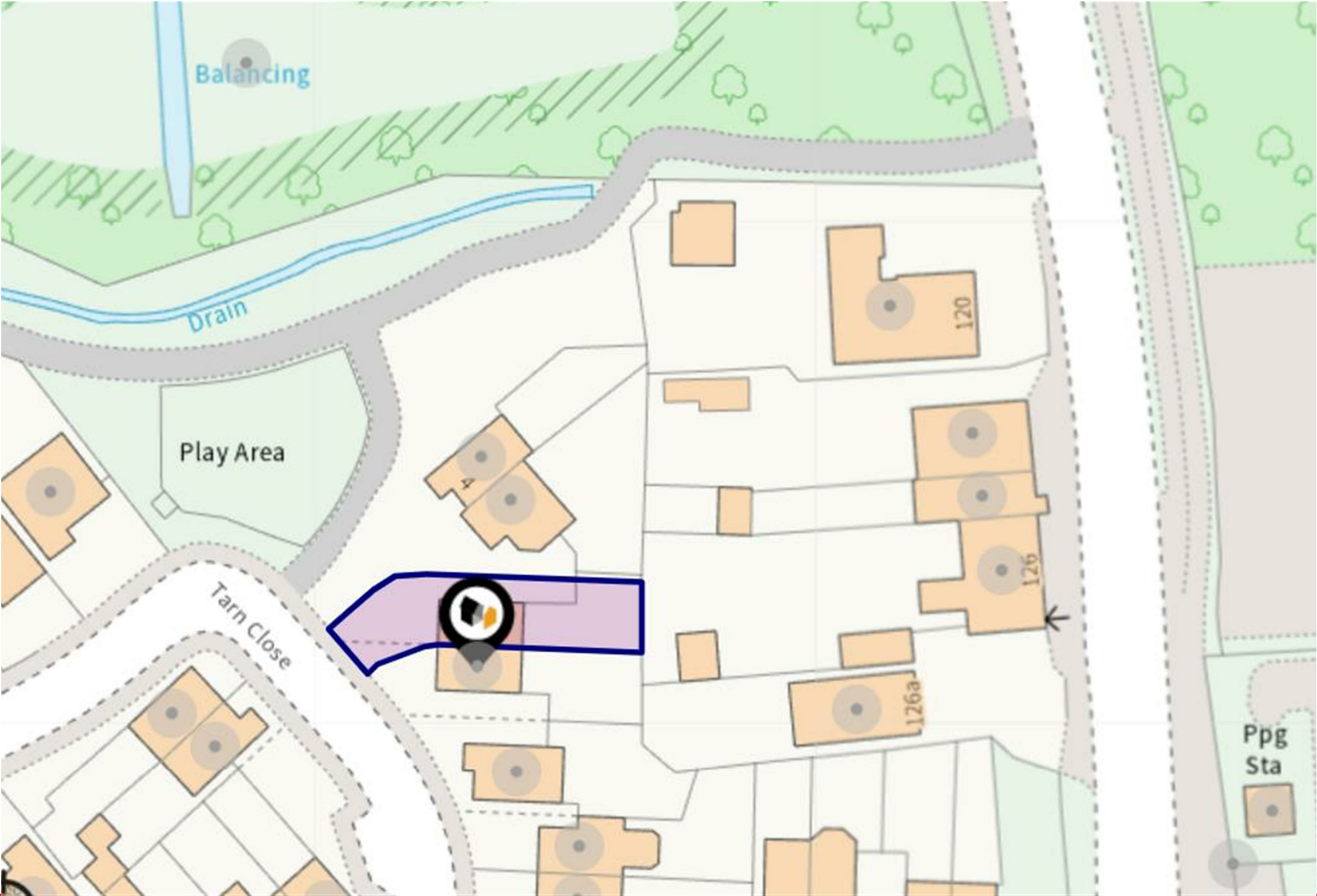
Within Southwood you'll find a Morrisons Supermarket, a café, several public houses and restaurants and a Nuffield Heath Fitness and Wellbeing Gym. Southwood Country Park is also nearby, popular amongst dog walkers and exercise enthusiasts. Also nearby there is a North and Southbound M3 junction, ideal for commuters.

Farnborough Town Centre is Approximately 2.1 miles away. He you'll find a range of shops, pubs and restaurants, as well as a retail park, several supermarkets, a cinema and Farnborough Main Train Station, popular amongst commuters for its mainline access into London Waterloo in approximately 36 minutes.









Balancing

Drain

Play Area

Tarn Close

120

126

126a

Ppg
Sta

