



Selbon

Residential sales & lettings

Jolly Miller Close, North Warnborough, Hook,
Hants, RG29 1GA

Offers over £500,000 Freehold

 3  2  1  B

01252 979300
Selbonproperty.co.uk

- Modern 3 Storey Town House
- Open Plan Lounge & Kitchen
- Third Bedroom (2nd Floor)
- Enclosed Rear Garden
- Development Charge TBC
- Entrance Hall & Cloakroom
- 2 Bedrooms, En Suite & Bathroom (1st Floor)
- Gas Radiator Heating & Double Glazed Windows
- 2 Allocated Parking Spaces
- No Onward Chain (Completion From 1st February 2026)

Selbon Estate Agents are delighted to offer this modern 3 storey town house to the market, built by T A Fisher builders, approx. 5 years ago within the sought after village of North Warnborough.

The property offers contemporary open plan accommodation, ideal for today's modern lifestyle. For those looking for home office space or a secondary living area for a young adult, bedroom three which is on the top floor, would be perfect.

Accessed via the parking spaces and pathway, the front door leads to the bright entrance hall with stairs to the first floor landing, storage space & cupboard and doors leading to the cloakroom and lounge/kitchen.

The open plan lounge/kitchen offers a 17ft living area with double glazed French doors to the rear garden leading to a 17ft kitchen/dining area, there is ample work surface, eye and base level storage units and some integrated appliances.

The first floor landing has stairs to the second floor, a storage cupboard housing the boiler and doors to the main bedroom with a walk-in wardrobe and an en suite shower, bedroom 2 and a family bathroom.

The second floor landing leads to bedroom 3 measuring 14ft x 13ft (with restricted head height).

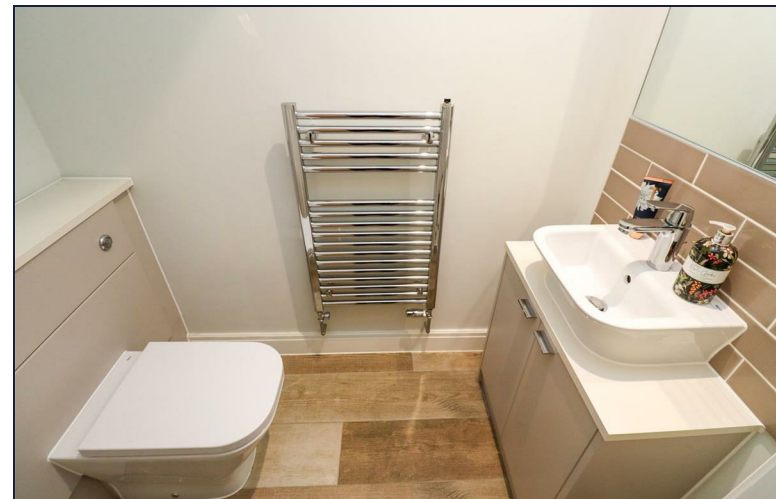
Further benefits include gas radiator heating, double glazed windows, 2 allocated parking spaces, visitor spaces and an enclosed rear garden.

We are advised that there is a development charge circa £350 (we are seeking formal confirmation).

North Warnborough is a small village situated in Northeast Hampshire. Its neighbouring villages are Odiham, Hook and Winchfield. It has a day-to-day general store and is within close proximity of the Mill House public house.

There are transport links including the M3 motorway and direct links to London Waterloo and Southampton from Hook's rail station (2 miles) where there are also indirect routes to Reading and Salisbury.

Offered with no onward chain and completion from 1st February 2026, we highly recommend an early viewing to avoid disappointment.









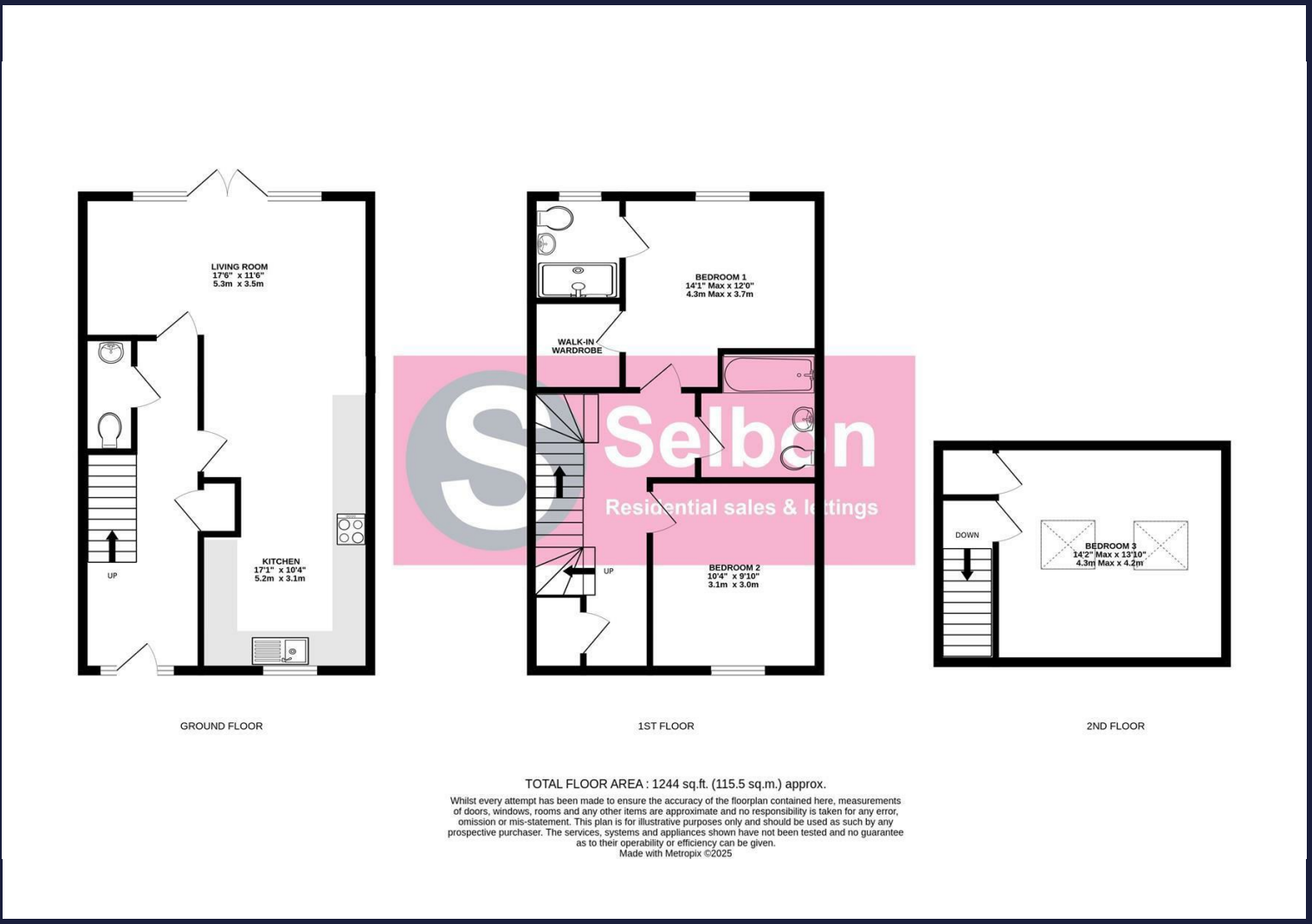








Floor Plans



Viewing

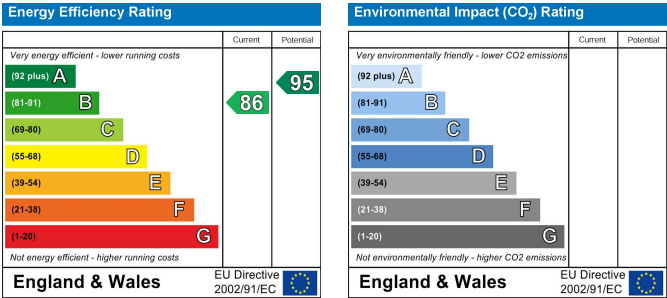
For further information on this property or to arrange a viewing please contact Selbon Estate Agents on 01252 979300

We give notice that these particulars are produced in good faith and in accordance with the Consumer Protection from Unfair Trading Regulations 2008 (CPR). They are set out as a general guide only and do not constitute any part of a contract or warranty whatsoever. Intending purchasers should not rely on them as statements of representation of fact, but must satisfy themselves by inspection or otherwise as to their accuracy. No person in the employment of Selbon has any authority to make or give any representation or warranty whatever in relation to the property. A detailed survey has not been carried out nor have the services, heating systems, appliances or specific fittings been tested. Any photograph incorporated within these particulars shows only certain parts of the property and it must not be assumed that any contents or fixtures and fittings shown in the photographs are either included with the property or indeed remain in it. Room sizes shown and any floor plans should not be relied upon for carpets and furnishings. If there is any point which is of particular importance to you we will be pleased to check the information for you and confirm that the property remains available. This is particularly important if you are contemplating travelling some distance to view the property.

Area Map



Energy Performance Graph



Council Tax Band: