

6 Longfellow Close, Haverfordwest



Offers In The Region Of £265,000



Set in a quiet cul-de-sac within a popular residential area of Haverfordwest, this three-bedroom detached bungalow offers an excellent opportunity for those seeking a spacious home with huge potential. Occupying a generous corner plot, the property benefits from off-road parking, a large enclosed garden, and a versatile layout ideal for family living.

While the property would benefit from modernisation, it provides a fantastic blank canvas for buyers to update and personalise to their own taste. The location is highly convenient — within easy reach of local schools, shops, leisure facilities, and Haverfordwest town centre, as well as offering good access to the stunning Pembrokeshire coastline.

This is a rare opportunity to acquire a property with great space, a desirable position, and endless potential to become a wonderful family home.

No onward chain.



Serving the whole of Pembrokeshire from our offices in Haverfordwest and Milford Haven.

www.rklucas.co.uk

01437 762538 01646 695713





Entrance
Fitted carpet, uPVC door with glass panel insert, double glazed uPVC sidelight

Living room
Fitted carpet, gas fire, double glazed uPVC window to the side, sliding door to

Sunroom
Fitted carpet, double glazed uPVC units, uPVC door with glass panel insert to outside

Kitchen
Fitted carpet, matching base and wall units, double glazed uPVC to the front, double glazed uPVC window to the side, door to rear porch

Rear porch
Hallway
Fitted carpet, uPVC door to carport, storage

Shower room
Fitted carpet, part tiled walls, electric shower, pedestal hand basin, low flush toilet, double glazed uPVC window to the front

Bedroom 1
Fitted carpet, double glazed uPVC window to the rear, storage

Bedroom 2
Fitted carpet, double glazed uPVC window to the front, storage

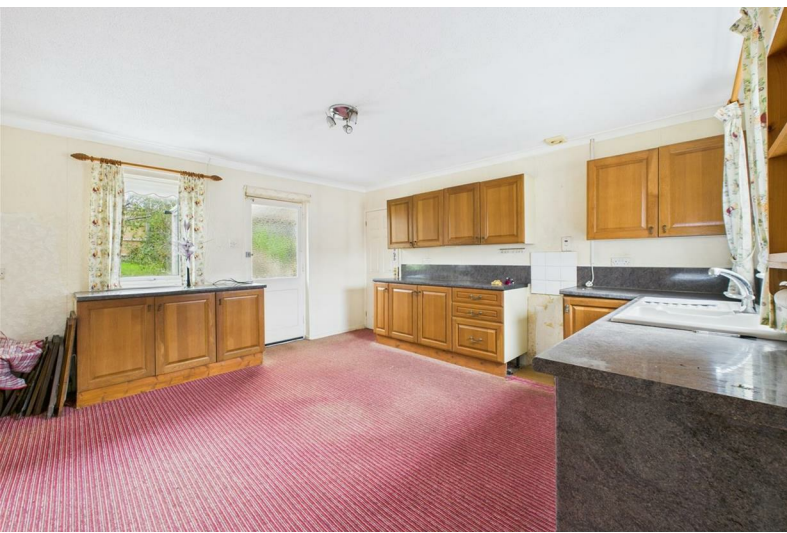
Bedroom 3
Fitted carpet, double glazed uPVC window to the rear, storage

Bathroom
Fitted carpet, part tiled walls, bath, pedestal hand basin, low flush toilet, double glazed uPVC window to the front

Outside
At the front, the property benefits from a generous driveway providing ample off-road parking, alongside a practical carport that offers shelter and convenience.

To the rear, a substantial, enclosed garden offers a private and tranquil retreat. Mature shrubbery and established apple trees create a welcoming backdrop, while the expansive lawn provides ample space for outdoor entertaining, family activities, or future garden enhancements, a versatile space with real potential to make your own.

Additional information
Services: All mains services connected
Tenure: Freehold
Local Authority: Pembrokeshire County Council
Tax Band: D
Broadband: Superfast broadband available
Mobile coverage: Available from a range of providers
For an indication of speeds and supply of coverage we recommend visiting Ofcom checker.





Approximate total area¹⁾
92.5 m²
996 ft²

(1) Excluding balconies and terraces

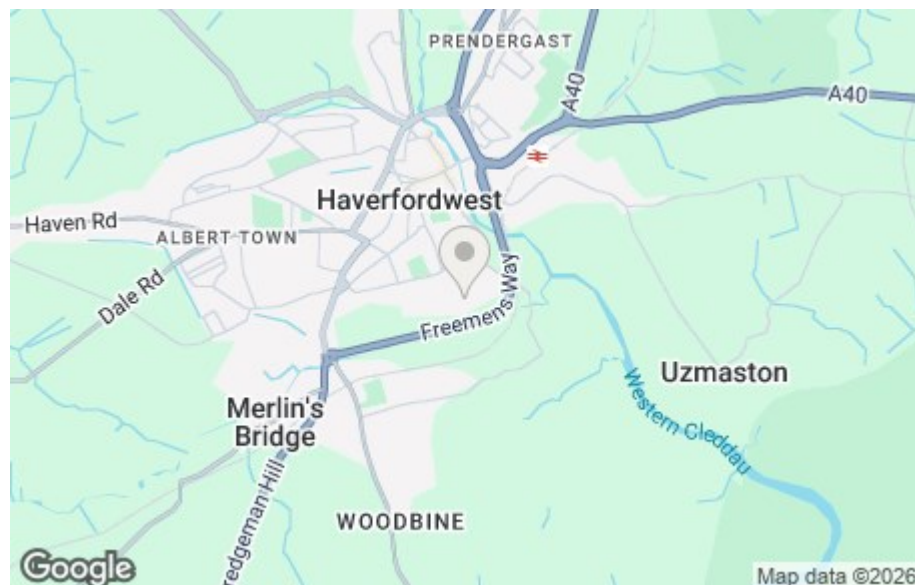
Calculations reference the RICS IPMS 3C standard. Measurements are approximate and not to scale. This floor plan is intended for illustration only.

GIRAFFE360

From our Haverfordwest office take the first left onto Quay Street. Continue on this road and ascend Union Hill. At the top of the hill, turn left onto Spencer Way, then left again and follow the road round. Take first right turn onto Byron Road and then the first left turn into Longfellow Close. Number 6 can be found at the end of the Cul-de-sac on the right hand side.

Energy Efficiency Rating

	Current	Potential
<i>Very energy efficient - lower running costs</i>		
(92 plus) A		
(81-91) B		
(69-80) C		
(55-68) D		
(39-54) E	54	66
(21-38) F		
(1-20) G		
<i>Not energy efficient - higher running costs</i>		
England & Wales	EU Directive 2002/91/EC	



These particulars are supplied subject to the property being unsold/let/unlet and on the express conditions that negotiations for purchase or otherwise are made through and deposit paid to R K Lucas & Son. The description is believed to be accurate, but it is issued as a guide only, thereafter the agents do not hold themselves responsible for any errors in description as the property will be sold/let according to the contract issued by the Vendor's/Lessor's Solicitors.