

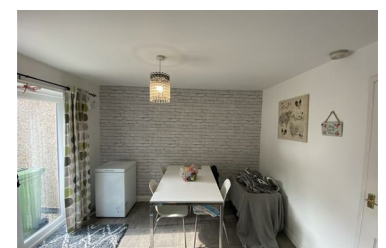


20 Bellingham Crescent, Plymouth, PL7 2QP

£195,000



A mid-terraced family home situated in Plympton. The accommodation comprises lounge, kitchen/diner, three bedrooms, separate wc, family bathroom and a loft room. There is an enclosed rear garden, a garage and an off-road parking space to the fore of the garage.



- Mid-terraced family home
- Kitchen/diner
- Family bathroom & separate wc
- Double-glazing
- Enclosed rear garden
- Lounge
- 3 bedrooms
- Loft room
- Gas central heating
- Garage with 1 parking space to the fore