



6

Cresswell Road, Morpeth, NE61 5HR

Offers Over £124,950

AMAZING RESULTS!™ An expert in your market. An expert at your side.™



**AMAZING RESULTS!™**

The Professional Estate Agents



FOR SALE BY LORAIN @ AMAZING RESULTS 01670 943016

\*\*\*\* TWO BED SEMI .. RECENTLY REFURBISHED HIGH STANDARD KITCHEN, STUNNING VIEWS, VIEWING ESSENTIAL TO APPRECIATE THE HOME ON OFFER \*\*\*

The property briefly comprises :- Double glazed entrance door leading to .. Lounge with bay window to front elevation. Dining room is positioned to the rear of the property with access to a beautifully appointed kitchen, giving access to rear garden and utility room.  
The upper floor has two bedrooms and family bathroom which is fitted to a high standard.  
Externally, the property has ample parking space to a large gravelled area. The rear is partly laid to lawn with decking and sitting area.  
This home has retained most of its original features and has wooden exposed floors in most but not all areas.  
Ellington is situated approximately one mile from Cresswell Beach and is opposite a nature reserve.  
The nearby Ellington Primary school has an outstanding Ofsted report which can be read on the School's website .  
Viewing is essential to appreciate the home on offer .

### Lounge

4.26 x 3.35 (13'11" x 10'11")

Double glazed window to front elevation, overlooking nature reserve.

Gas central heated radiator.

Spacious living space.

### Dining room

4.26 x 3.38 (13'11" x 11'1")

Double glazed window to rear overlooking large private enclosed garden. Exposed wooden floor gives this room endless character. Gas central heated radiator.

### Kitchen

5.4 x 1.75 (17'8" x 5'8")

Double glazed window to side and rear with double glazed external door giving access to rear garden and outdoor utility room.

This kitchen has been refurbished to a high standard and complements the style of home on offer . Briefly the kitchen comprises .. Tiled flooring matching wall and base units with built in appliances. Single sink drainer with mixer taps. Beautifully thought out and timeless.

### Master Bedroom

3.34 x 4.26 (10'11" x 13'11")

Double glazed window to front, gas central heated radiator.

Views from window over look nature reserve with views towards to the cheviots.

Beautiful and unspoilt views.



Call 0845 301 2222 to view this property, or visit [www.amazing-results.co.uk](http://www.amazing-results.co.uk) for more details

AMAZING RESULTS!™ An expert in your market. An expert at your side.™





### Bedroom two

3.40 x 2.55 (11'1" x 8'4")

Double glazed window to rear, Gas central heated radiator.

Wooden exposed floor.

### Bathroom

Double glazed window to rear. Heated towel rail.

Tastefully fitted modern bathroom comprising:- Panelled Jacuzzi bath with shower over and protective glass shower screen. Vanity wash hand basin wall mounted in matching corner storage unit.. Low level WC

### External Rear

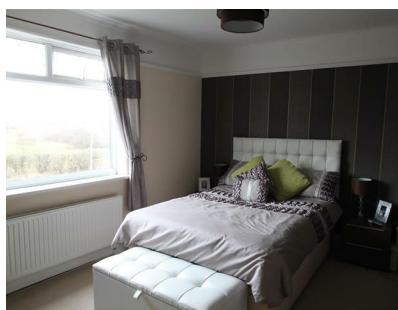
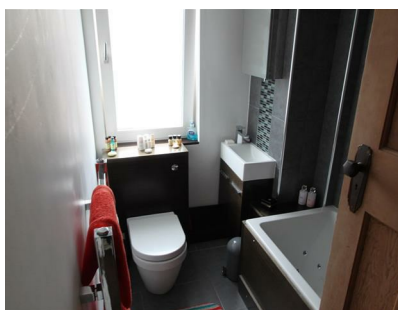
Separate utility room, with power and light and plumbed for washing machine. Ideal storage .

The rear is a good size enclosed garden with mature shrubs, partly laid to lawn and large decking area ideal for BBQ.

There is also an additional paved sitting area.

### Images of Creswell Beach

Ellington is situated approximately one mile from Creswell Beach and approx 6 Miles from Morpeth .



#### Agents Note

Viewing is strictly by appointment through AMAZING RESULTS! on 0845 301 2222. **These property details** are set out as a general outline only and do not constitute any part of an Offer or Contract. **Any Services**, equipment, fittings or central heating systems have not been tested and no warranty is given or implied that these are in working order. **All measurements, distances and areas** are approximate and for guidance only. **Energy performance:** A copy of the full Energy Performance Certificate is available upon request. **This material** is protected by the laws of copyright. The owner of the copyright is AMAZING RESULTS! Estate Agents.

**Interested in this property?** Call 0845 301 2222 to find out how much your property is worth. FREE market appraisal.  
For today's best mortgage deals - 0845 301 2222

Call 0845 301 2222 to view this property, or visit [www.amazing-results.co.uk](http://www.amazing-results.co.uk) for more details

AMAZING RESULTS!™ An expert in your market. An expert at your side.™



**AMAZING RESULTS!™**  
The Professional Estate Agents





Call us from 8am – 8pm **0845 301 2222** Email: [sales@amazing-results.co.uk](mailto:sales@amazing-results.co.uk) **AMAZING RESULTS!** Conference House, 152 Morrison Street, Edinburgh, EH3 8EB

**AMAZING RESULTS!™** An expert in your market. An expert at your side.™