



High Street Templecombe

Per Month
£800 Per Month

Situated in the sought-after village of Templecombe, this well-presented top floor two-bedroom flat offers comfortable living in a convenient location.

The property has recently been redecorated throughout, providing a fresh and modern feel. The accommodation is well laid out, featuring bright and airy living spaces ideal for both relaxing and everyday living. Both bedrooms are well-proportioned, offering flexibility for couples, small families, or those needing a home office.

Externally, the property benefits from allocated parking, adding to the overall convenience.

Templecombe benefits from its own railway station, offering direct links to London, making this an ideal location for commuters while still enjoying village life. With local amenities also within easy reach, this attractive flat provides a great balance of convenience and charm.

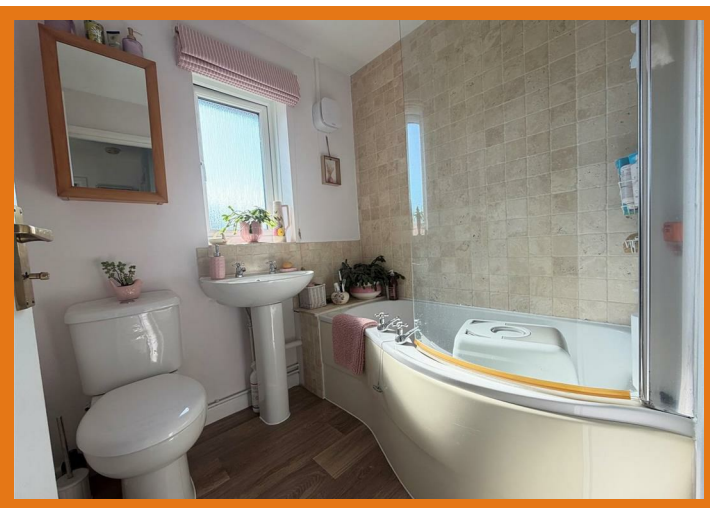
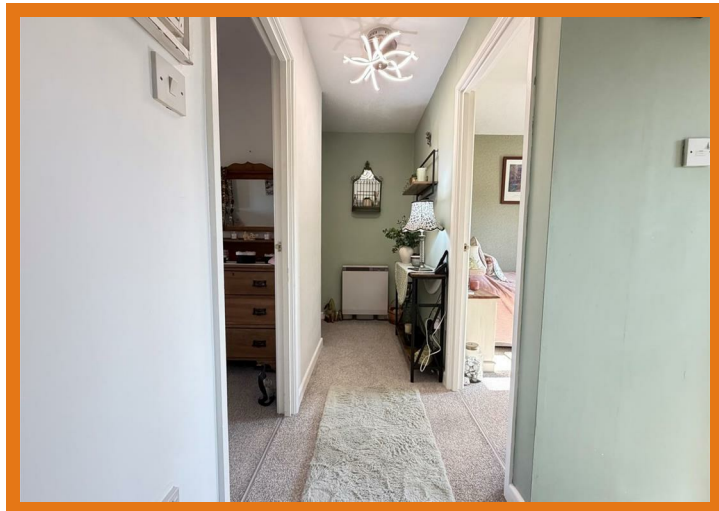
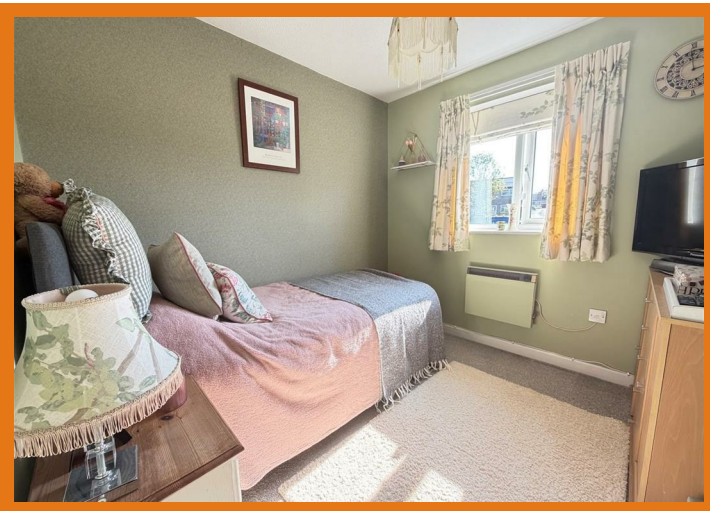
Available Now
Sorry Non Smokers/Vapes
EPC Rating Band 'C'
Council Tax Band 'A'
Deposit Required £920.00 (1 week before the move in date along with the rent)
Subject to Referencing, 1 weeks (£180.00) holding deposit will be required.
www.mortonnew.co.uk

Landlord has the right to refuse

1 Market House
Market Place
Sturminster Newton
Dorset
DT10 1AS

t. 01258 473030
sales@mortonnew.co.uk
www.mortonnew.co.uk

Energy Efficiency Rating		Current	Potential
Very energy efficient - lower running costs			
(92 plus)	A		
(81-91)	B		
(69-80)	C		
(55-68)	D		
(39-54)	E		
(21-38)	F		
(1-20)	G		
Not energy efficient - higher running costs			
England & Wales		EU Directive 2002/91/EC	



DISCLAIMER: These particulars, whilst believed to be accurate are set out as a general outline only for guidance and do not constitute any part of an offer or contract. Intending purchasers should not rely on them as statements or representation of fact, but must satisfy themselves by inspection or otherwise as to their accuracy. We have not carried out a detailed survey nor tested the services, appliances and specific fittings. Room sizes should not be relied upon for carpets and furnishings. The measurements given are approximate. No person in this firm's employment has the authority to make or give any representation or warranty in respect of the property.