



Church Street Templecombe

PCM
£1,400 PCM

Set within the village of Henstridge, this charming three-bedroom cottage offers a peaceful lifestyle in a quiet, tucked-away location.

The property has been recently renovated throughout to a high standard, combining character with modern finishes to create a comfortable and stylish home. The accommodation is well laid out, providing bright and inviting living spaces ideal for both everyday living and entertaining. The main bedroom benefits from its own ensuite shower room, adding a touch of convenience and privacy.

Externally, the cottage boasts a large garden, perfect for outdoor enjoyment and offering plenty of space for relaxation. The property also includes two allocated parking spaces.

Situated within easy reach of local amenities, this delightful home provides the perfect balance of village charm and modern convenience.

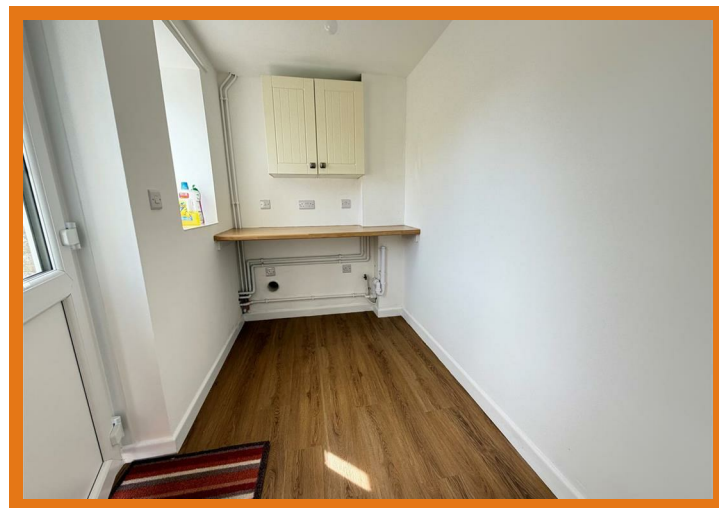
Available Now
Sorry Non Smokers/Vapes
EPC Rating Band 'E'
Council Tax Band 'C'
Deposit Required £1615.00 (1 week before the move in date along with the rent)
Subject to Referencing, 1 weeks (£320.00) holding deposit will be required.
www.mortonnew.co.uk

Landlord has the right to refuse

1 Market House
Market Place
Sturminster Newton
Dorset
DT10 1AS

t. 01258 473030
sales@mortonnew.co.uk
www.mortonnew.co.uk

| Energy Efficiency Rating | | Current | Potential |
|---|--|----------------------------|-----------|
| Very energy efficient - lower running costs | | | |
| (92 plus) A | | | |
| (81-91) B | | | |
| (69-80) C | | | |
| (55-68) D | | | |
| (39-54) E | | | |
| (21-38) F | | | |
| (1-20) G | | | |
| Not energy efficient - higher running costs | | | |
| England & Wales | | EU Directive 2002/91/EC | |



DISCLAIMER: These particulars, whilst believed to be accurate are set out as a general outline only for guidance and do not constitute any part of an offer or contract. Intending purchasers should not rely on them as statements or representation of fact, but must satisfy themselves by inspection or otherwise as to their accuracy. We have not carried out a detailed survey nor tested the services, appliances and specific fittings. Room sizes should not be relied upon for carpets and furnishings. The measurements given are approximate. No person in this firm's employment has the authority to make or give any representation or warranty in respect of the property.