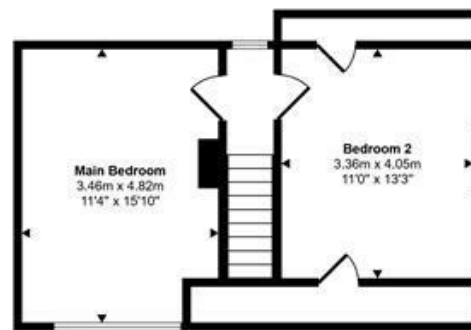
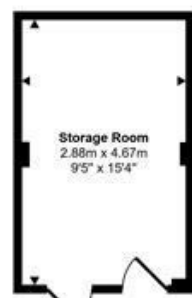


Ground Floor



First Floor



Storage Room

This floorplan is only for illustrative purposes and is not to scale. Measurements of rooms, doors, windows, and any items are approximate and no responsibility is taken for any error, omission or mis-statement. Icons of items such as bathroom suites are representations only and may not look like the real items. Made with Made Snappy 360.

1 Market House  
Market Place  
Sturminster Newton  
Dorset  
DT10 1AS

t. 01258 473030  
sales@mortonnew.co.uk  
www.mortonnew.co.uk

Energy Efficiency Rating		Current	Potential
Very energy efficient - lower running costs			
(92 plus) A			
(81-91) B			
(69-80) C			
(55-68) D		67	70
(39-54) E			
(21-38) F			
(1-20) G			
Not energy efficient - higher running costs			
England & Wales	EU Directive		



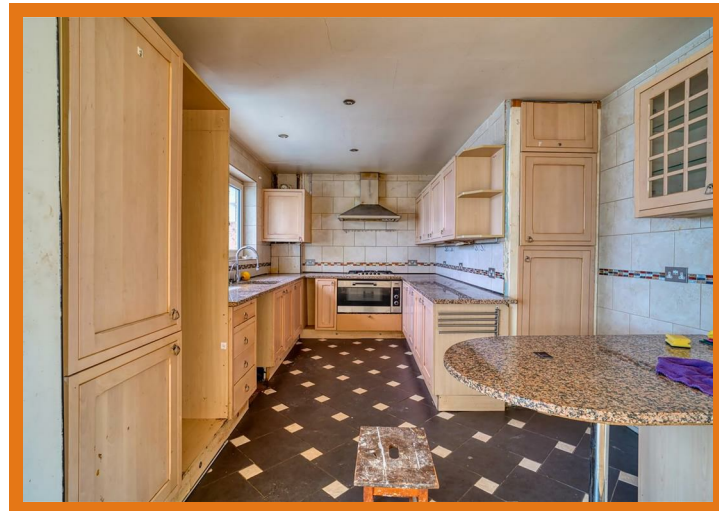
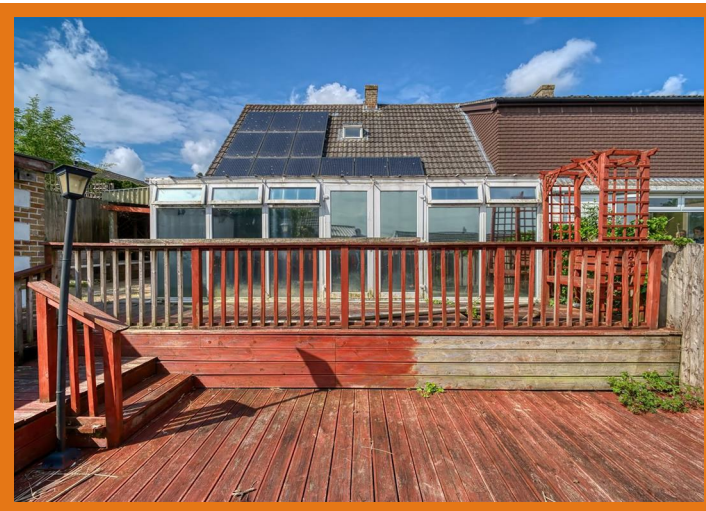
Hardy Close  
Marnhull

Guide Price  
£300,000

A two bedroom semi detached chalet bungalow set within the popular village of Marnhull, Dorset's largest village nestled in the heart of the Blackmore Vale. Well served for everyday needs, the village offers two primary schools, a GP surgery, two public houses, a pharmacy and a range of local shops.

Offered with significant scope to modernise and improve throughout, the property represents a genuine opportunity for those looking to put their own stamp on a spacious home. The accommodation is generously proportioned, with a large sitting room featuring a feature fireplace, a kitchen diner, a study which could equally serve as a ground floor bedroom, a bathroom and a spectacular conservatory extending to just under 22 feet. The first floor comprises two generously sized double bedrooms.

Outside, the rear garden is laid to decking and enjoys a good level of privacy, with a small area of lawn to the front creating a pleasant approach. A carport to the side and ample driveway parking complete the plot. Offered for sale with the benefit of no onward chain.



## The Property

### Inside

#### Ground Floor

A porch leads through to the entrance hall, from which the principal ground floor rooms radiate. The sitting room is a particularly spacious reception room featuring a fireplace as its focal point. Off the hallway, a study is a versatile space which, given the presence of a ground floor bathroom, could equally serve as a ground floor bedroom if required.

The kitchen is in need of updating and replacement, though it is a well proportioned space with real scope to create something impressive. Beyond the kitchen, a spectacular conservatory stretches to just under 22 feet, filling the space with natural light and creating a wonderful additional reception room that could be enjoyed throughout the year. A bathroom completes the ground floor accommodation.

#### First Floor

Stairs rise to the first floor where two double bedrooms are found, both generous in size.

### Outside

#### Garden

To the rear, the garden is laid to decking and enjoys a good level of privacy. A small area of lawn sits to the front of the property, creating a pleasant approach.

#### Parking

A carport to the side of the property and a generous driveway offer ample off road parking for multiple vehicles. A converted garage currently serves as a useful shed, with the potential to be reinstated as a garage if required.

### Useful Information

Energy Efficiency Rating TBC  
Council Tax Band  
Wholly Owned Solar Pannels  
Gas Fired Central Heating  
Mains Drainage  
Freehold  
No Onward Chain

### Location and Directions

Marnhull is approximately 3 miles to the north of the market town of Sturminster Newton and lies in the Blackmore Vale in an Area of Outstanding Natural Beauty. The village is one of the largest in Dorset with a population of about 2000. It has an active community with a variety of friendly and thriving clubs and societies. There is a post office, two general stores, hairdressers, chemist and doctors surgery. There are three churches, two public houses and a number of Bed & Breakfast places, as well as two primary schools. Further facilities can be found at Shaftesbury and Gillingham which are approximately 6 miles away, with the latter benefiting from a mainline train station, serving London Waterloo and Exeter St David's.

Postcode DT10 1LG

What3words  
///flagging.minimums.snipped

DISCLAIMER: These particulars, whilst believed to be accurate are set out as a general outline only for guidance and do not constitute any part of an offer or contract. Intending purchasers should not rely on them as statements or representation of fact, but must satisfy themselves by inspection or otherwise as to their accuracy. We have not carried out a detailed survey nor tested the services, appliances and specific fittings. Room sizes should not be relied upon for carpets and furnishings. The measurements given are approximate. No person in this firms employment has the authority to make or give any representation or warranty in respect of the property.