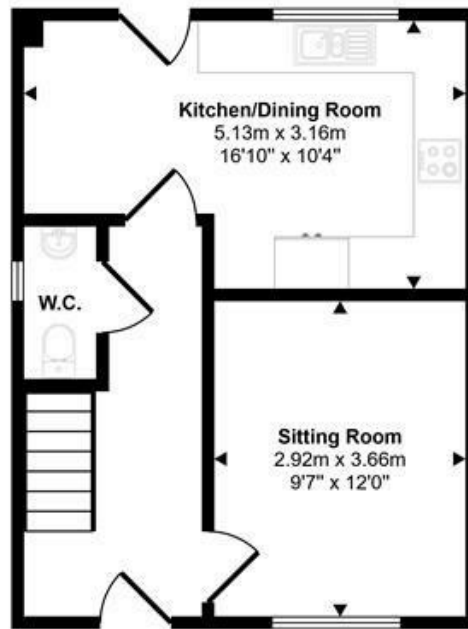
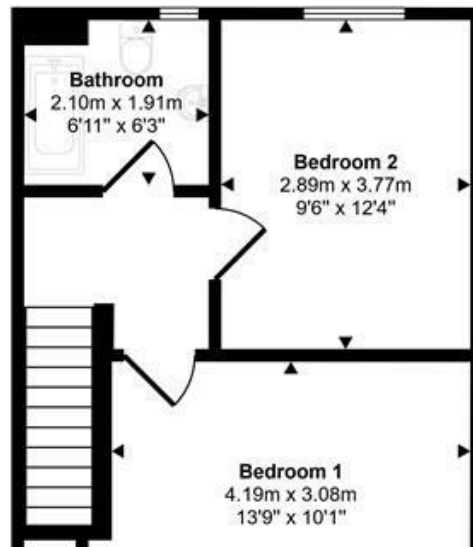


Approx Gross Internal Area
72 sq m / 773 sq ft



Ground Floor
Approx 36 sq m / 384 sq ft



Coward Road Mere

Turnkey Modern Home in Mere – 50% Shared Ownership

Step straight into stylish, low-maintenance living with this sought-after Wiltshire town of Mere. Only two years old and

— **Mor**
selling an

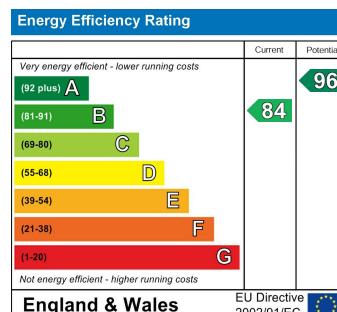


First Floor
Approx 36 sq m / 389 sq ft

This floorplan is only for illustrative purposes and is not to scale. Measurements of rooms, doors, windows, and any items are approximate and no responsibility is taken for any error, omission or mis-statement. Icons of items such as bathroom suites are representations only and may not look like the real items. Made with Made Snappy 360.

Restways
High Street
Gillingham
Dorset
SP8 4AA

t. 01747 824 547
gillingham@mortonnew.co.uk
www.mortonnew.co.uk



basis (subject to criteria, with the option to staircase to fu

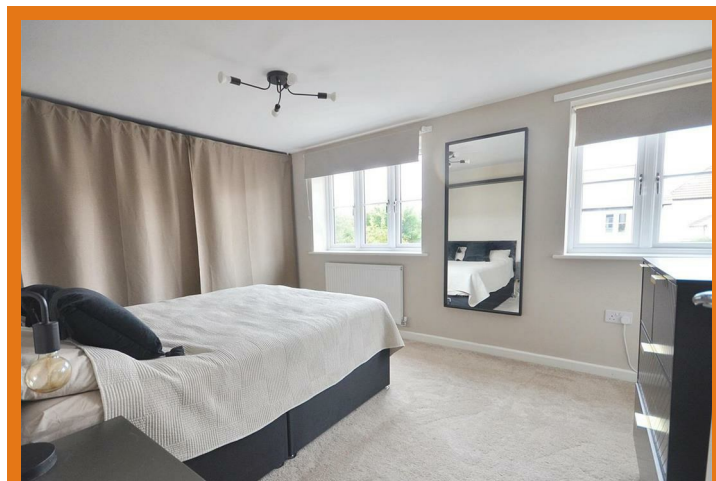
Set in a quiet cul-de-sac on the edge of a popular developo
known for its excellent food, and within easy walking dista

Inside, the property has a fresh, contemporary feel with q
in or relaxing with friends or family. The kitchen and dining
cooking, entertaining, and everyday living. For convenien
and a stylish bathroom, all you need to do is add your furn

Outside, the south-facing rear garden is easy to maintain
home office or creative studio. You'll also benefit from two

Whether you're looking for your first home or a smart mov
convenience, and room to grow — all in one of Wiltshire'

www



The Property

Accommodation

Inside

Ground Floor

The front door opens into a welcoming and bright entrance hall with stairs rising to the first floor and doors leading off to all the ground floor accommodation. The appearance and practicality, there is wood effect flooring, which continues throughout the ground floor. The good sized sitting room looks out to the front and has plenty of room for settees and armchairs and provides a lovely space to relaxing or chatting with friends. For convenience, there is a cloakroom - ideal for guests.

First Floor

On this floor there is a double bedroom with built-in storage and a bathroom consisting of a shower, toilet, plus full height vanity unit, WC and pedestal sink, splash back and wood effect flooring.

Outside

Parking

From the main entrance, there is a small paved area in front of the property with room to park a car.



The spacious combined kitchen and dining room offers a great social space for having friends or family round for meals. The kitchen area is fitted with a range of sleek units consisting of floor cupboards, tall larder cupboards with shelves, separate drawer unit with deep pan and cutlery drawers plus eye level cupboards (one housing the heating boiler) and shelves. You will find a generous amount of work surfaces with a matching upstand and a one and a half bowl stainless steel sink and drainer with a swan neck mixer tap. There is space and plumbing for a washing machine and dishwasher, space for a fridge/freezer and the electric oven is built in with a ceramic hob, metal splash back and an extractor hood above. There is a door to the rear garden.

Garden
To the side
opens to a p
where there
tap. The res
canvas for y
timber sum
adapt to a w
or a chill ou

Useful Info

Energy Effic
Council Tax
uPVC Doub
Gas Fired C
Boiler

DISCLAIMER: These particulars, whilst believed to be accurate are set out as a general statements or representation of fact, but must satisfy themselves by inspection or otherwise. Sizes should not be relied upon for carpets and furnishings. The measurements given are a property.