



KI Keith Ian

Sutton Court, Ware, SG12 9FH
£320,000

Sutton Court, Ware, SG12 9FH

Keith Ian are pleased to offer for sale this spacious GROUND FLOOR 2 bedroom 2 bathroom riverside apartment. The property is located within this sought after town centre development which is a 5 minute walk to Ware high street. The property benefits from a large lounge with doors leading to a small patio area which extends to a communal garden area. The main bedroom has fitted wardrobes and a shower en-suite. Other benefits are double glazing a larger than average second bedroom and a LONG LEASE.

Ware is located 24 miles North of Central London and within easy reach of the capital and other large towns via its many road links such as the A10 and A414.

The historic town centre offers a superb array of amenities including supermarkets, boutique shops, restaurants and public houses. The River Lee runs through the town centre with its famous Gazebo's and boasts scenic walks towards Hertford to the West and Broxbourne to the South.

The mainline station is located approximately 0.4 miles from the property and offers services into Liverpool Street in around 40 minutes. Other services are available from Broxbourne providing access to Stansted and Cambridge and services from Tottenham Hale across London.

LEASEHOLD INFORMATION

Lease Length - 104

Maintenance Charge - £170pm

Ground Rent - £125pa

Information been provided via the vendor, please check prior to completion with your solicitor.

ENTRANCE LOBBY

LOUNGE

17'4 x 13'8 (5.28m x 4.17m)

KITCHEN

10'4 x 7 (3.15m x 2.13m)

BEDROOM ONE

14'4 x 10 (4.37m x 3.05m)

EN-SUITE

BEDROOM TWO

11'4 x 6'6 (3.45m x 1.98m)

BATHROOM

PATIO/COMMUNAL GARDENS

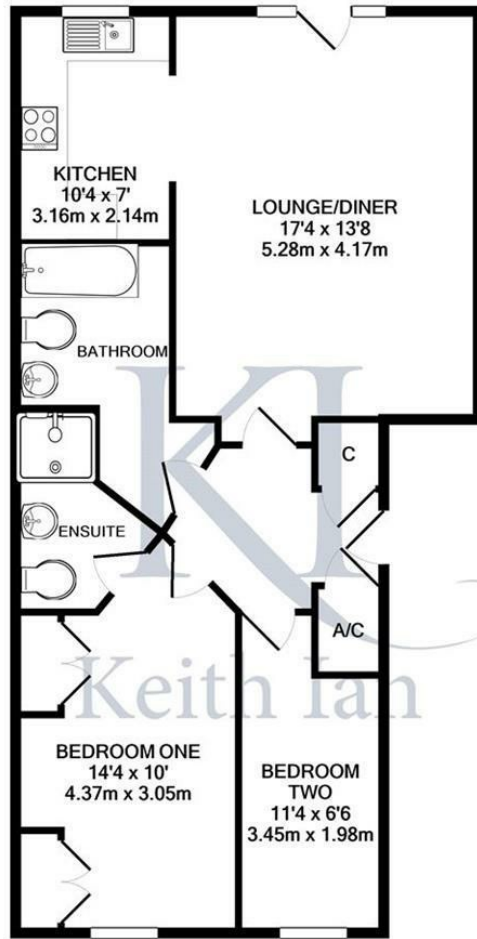
WHAT3WORDS

///herds.audio.curry





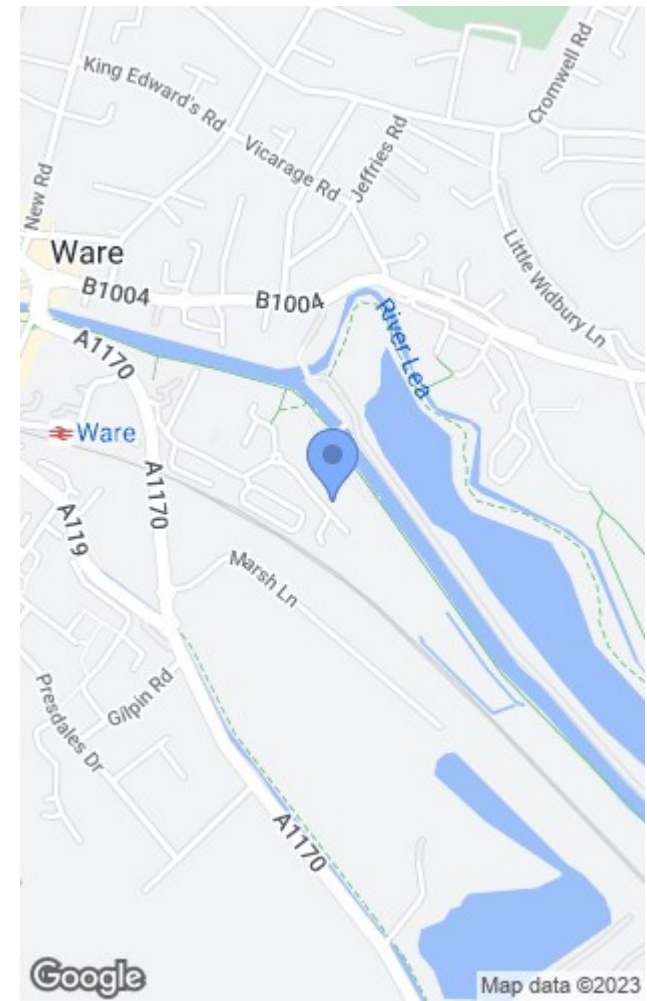




TOTAL APPROX. FLOOR AREA 757 SQ.FT. (70.3 SQ.M.)

Whilst every attempt has been made to ensure the accuracy of the floor plan contained here, measurements of doors, windows, rooms and any other items are approximate and no responsibility is taken for any error, omission, or mis-statement. This plan is for illustrative purposes only and should be used as such by any prospective purchaser. The services, systems and appliances shown have not been tested and no guarantee as to their operability or efficiency can be given
 Made with Metropix ©2021

These particulars are believed to be correct but their accuracy is not guaranteed and they do not form part of any contract. Whilst every effort is made to ensure the accuracy of these details, it should be noted that the above measurements are approximate only. Any internal photographs are intended as a guide only and it should not be assumed that any of the furniture/fittings are included in any sale. Where shown, details of lease, ground rent and service charge are provided by the vendor and their accuracy cannot be guaranteed, as the information may not have been verified and further checks should be made either through your solicitor. Where appliances, including central heating, are mentioned, it cannot be assumed that they are in working order, as they have not been tested. Please also note that wiring, plumbing and drains have not been checked.



Energy Efficiency Rating		Current	Potential
Very energy efficient - lower running costs			
(92 plus) A			
(81-91) B			
(69-80) C			
(55-68) D			
(39-54) E			
(21-38) F			
(1-20) G			
Not energy efficient - higher running costs			
England & Wales		EU Directive 2002/91/EC	
		72	79

Environmental Impact (CO ₂) Rating		Current	Potential
Very environmentally friendly - lower CO ₂ emissions			
(92 plus) A			
(81-91) B			
(69-80) C			
(55-68) D			
(39-54) E			
(21-38) F			
(1-20) G			
Not environmentally friendly - higher CO ₂ emissions			
England & Wales		EU Directive 2002/91/EC	

T: 01920 463131
 ware@keithian.com
 www.keithian.com



Offices at Cheshunt Ware and Buntingford
 Managing Director Ian F. Robertson

Keith Ian Ltd trading as Keith Ian Partnership. Registered in England. No. 4700202