



£475,000  
Greyfriars, Ware

KI





## ***Greyfriars, Ware, SG12 0XW***

*Keith Ian are pleased to offer for sale this lovely 3 bedroom semi detached family home, located on the popular vicarage development. The property has recently been re-carpeted and redecorated throughout and also benefits from new fascias, soffits and guttering. The property offers spacious accommodation with an offset lounge/ diner and 3 good size bedrooms. Other benefits are gas central heating, double glazing, garage and rear garden with patio.*

*Ware is located 24 miles North of Central London and within easy reach of the capital and other large towns via its many road links such as the A10 and A414. The historic town centre offers a superb array of amenities including supermarkets, boutique shops, restaurants and public houses. The River Lee runs through the town centre with its famous Gazebo's and boasts scenic walks towards Hertford to the West and Broxbourne to the South.*

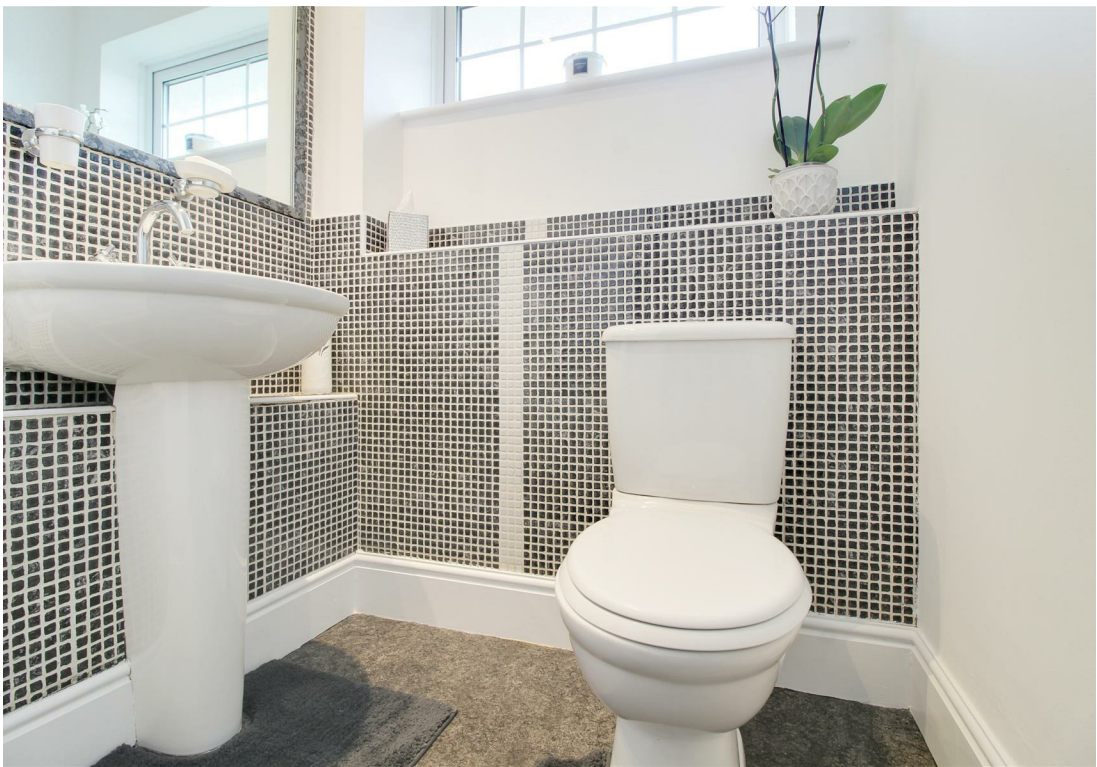
*The mainline station is located approximately 1.4 miles from the property and offers services into Liverpool Street in around 40 minutes. Other services are available from Broxbourne providing access to Stansted and Cambridge and services from Tottenham Hale across London.*



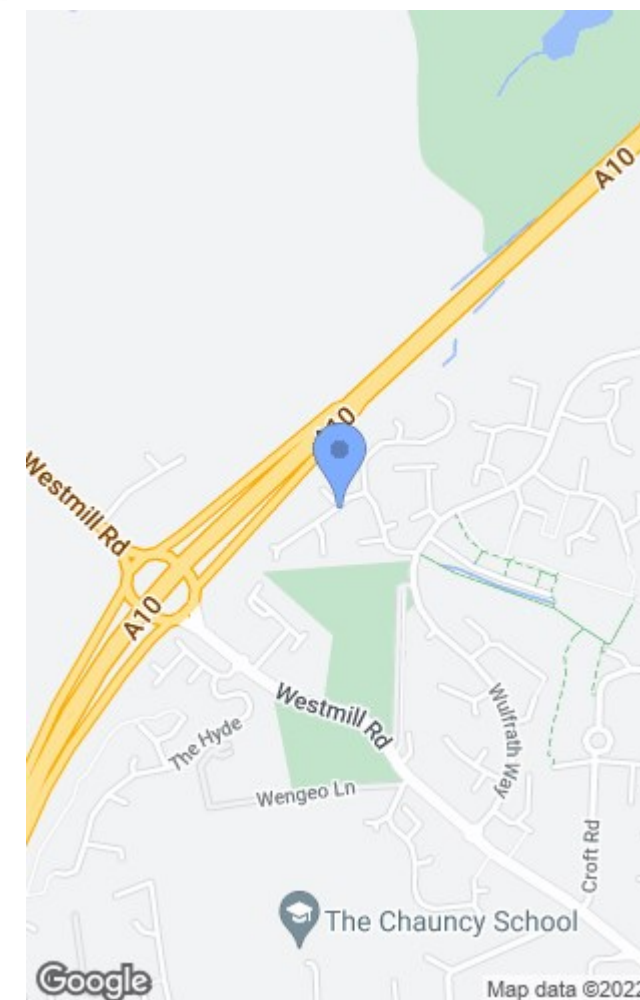
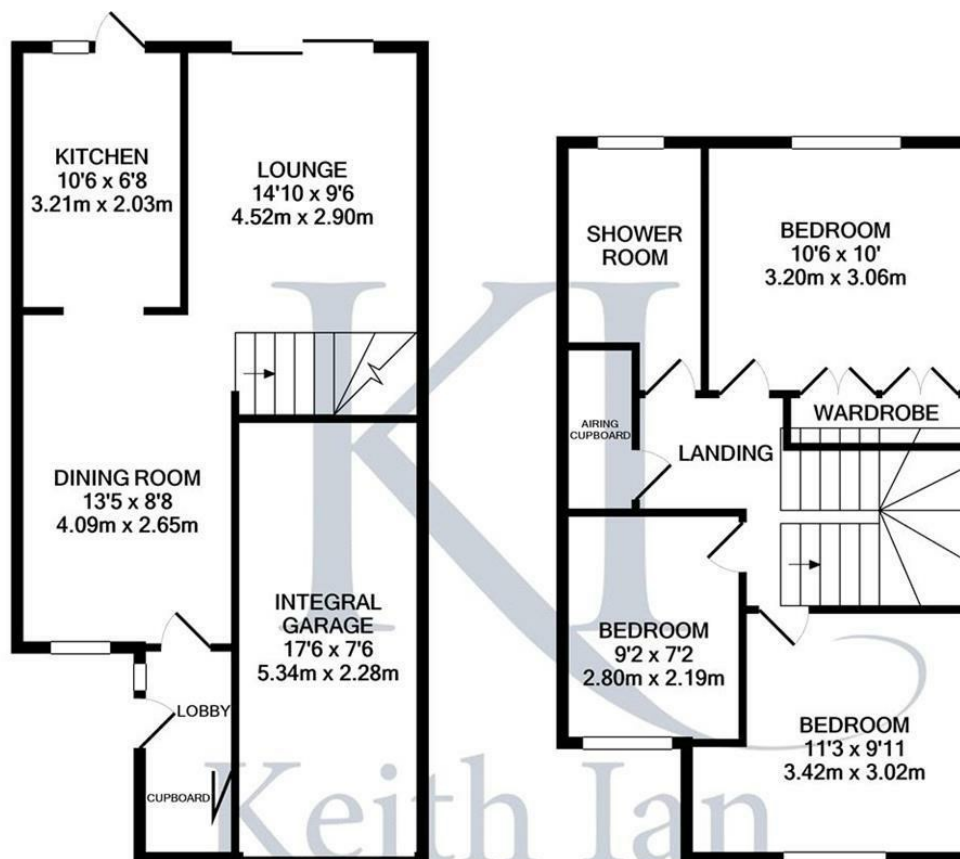












Energy Efficiency Rating		
	Current	Potential
Very energy efficient - lower running costs		
(92 plus) A		86
(81-91) B		
(69-80) C	69	
(55-68) D		
(39-54) E		
(21-38) F		
(1-20) G		
Not energy efficient - higher running costs		
England & Wales	EU Directive 2002/91/EC	

Environmental Impact (CO <sub>2</sub> ) Rating		
	Current	Potential
Very environmentally friendly - lower CO <sub>2</sub> emissions		
(92 plus) A		
(81-91) B		
(69-80) C		
(55-68) D		
(39-54) E		
(21-38) F		
(1-20) G		
Not environmentally friendly - higher CO <sub>2</sub> emissions		
England & Wales	EU Directive 2002/91/EC	

These particulars are believed to be correct but their accuracy is not guaranteed and they do not form part of any contract. Whilst every effort is made to ensure the accuracy of these details, it should be noted that the above measurements are approximate only. Any internal photographs are intended as a guide only and it should not be assumed that any of the furniture/fittings are included in any sale. Where shown, details of lease, ground rent and service charge are provided by the vendor and their accuracy cannot be guaranteed, as the information may not have been verified and further checks should be made either through your solicitor. Where appliances, including central heating, are mentioned, it cannot be assumed that they are in working order, as they have not been tested. Please also note that wiring, plumbing and drains have not been checked.

T: 01920 463131  
ware@keithian.com  
www.keithian.com



Offices at Cheshunt Ware and Buntingford  
Managing Director Ian F. Robertson  
Keith Ian Ltd trading as Keith Ian Partnership. Registered in England. No. 4700202