



ESTATE AGENTS

179, Ashburnham Road, Hastings, TN35 5LL

Web: www.pcmestateagents.co.uk
Tel: 01424 839111

Price £500,000

Occupying a prime position on one of Clive Vale's most desirable roads is this attractive late-Victorian FOUR BEDROOM SEMI-DETACHED HOUSE, brimming with character, charm and an abundance of natural light. This elegant home has been lovingly maintained and is presented to a beautiful standard throughout. The décor is tasteful and inviting, complemented by well-proportioned rooms and a graceful flow across two floors.

A welcoming entrance hall sets the tone, leading seamlessly into a BRIGHT BAY FRONTED LIVING ROOM complete with a wood-burning stove, a perfect space for cosy evenings. An additional reception room offers flexibility, whether as a formal dining area, snug or home office. To the rear, the SPACIOUS KITCHEN-BREAKFAST ROOM truly forms the heart of the home, thoughtfully designed and well-equipped, it opens effortlessly onto the established rear garden, offering a wonderful space for everyday family life and entertaining alike.

Upstairs, the property continues to impress with four generously sized bedrooms. The principal bedroom enjoys a lovely bay window and partial sea views, while the family bathroom is finished with stylish tiling and accompanied by a separate WC, both with UNDERFLOOR HEATING.

The rear garden is a true highlight, a mature, private oasis laid mainly to lawn, with ample space to dine al fresco, play or simply unwind. This is a delightful home, offering a rare combination of period charm, space and modern comfort in a much-loved Hastings location.

DOUBLE GLAZED FRONT DOOR

Opening to:

WELCOMING VESTIBULE

High ceilings with coving, wood parquet flooring laid in herringbone pattern, open plan to:

MAIN ENTRANCE HALL

Elegant staircase rising to upper floor accommodation, Victorian decorative dado rail, thermostat for gas fired central heating, understairs storage cupboard, radiator.

LOUNGE

17'1 into bay x 12'7 max (5.21m into bay x 3.84m max)

High ceilings with cornicing, fireplace with wood burning stove, stripped wooden floorboards, two radiators, television point, wall lighting, picture rail, deep double glazed bay window to front aspect with views over the front garden and allowing lots of natural light to flood into the room, door returning to entrance hall.

DINING ROOM/ RECEPTION ROOM

12'6 x 12' (3.81m x 3.66m)

High ceilings, picture rail, period fireplace, high skirting, radiator, double glazed window to rear aspect with views onto the garden.

KITCHEN-BREAKFAST ROOM

20'6 x 11'6 (6.25m x 3.51m)

Tiled flooring throughout, part tiled walls in the kitchen area, double aspect room with double glazed windows to both side elevations, a further original stained glass window, double glazed double doors providing access onto the rear garden with framed views over, ample space for dining table, radiator. Kitchen itself is fitted with a range of matching lower based cupboards and drawers fitted with soft close hinges with complimentary work surfaces over, ceramic 1 1/2 bowl sink unit with mixer tap, four ring electric hob with fitted cooker hood over and oven below, space for tall fridge/freezer, integrated washing machine, integrated dishwasher, wall mounted cupboard concealed boiler, inset downlights, traditional pendant lighting in the dining area, return door to entrance hall.

GALLERIED LANDING

Coved ceiling, radiator, built in original cupboards, loft hatch, dado rail, coved ceiling, wall lighting.

MASTER BEDROOM

17'5 into bay x 12'3 (5.31m into bay x 3.73m)

Original period fireplace, high ceilings which are panelled with cornicing, stripped exposed wooden floorboards, two radiators, double glazed deep bay window to front aspect with lovely views down Ashburnham Road with views out to sea and over Clive Vale.

BEDROOM TWO

12'8 x 10'8 (3.86m x 3.25m)

Original built in cupboard, high ceiling, radiator, exposed stripped wooden floorboards, double glazed window to rear aspect with views over the garden.

BEDROOM THREE

11'2 x 9'9 (3.40m x 2.97m)

Radiator, double glazed window to rear aspect with views over the garden.

BEDROOM FOUR

9'5 x 6'3 (2.87m x 1.91m)

Exposed painted wooden floorboards, radiator, high ceilings, double glazed window to front aspect.

BATHROOM

Panelled bath with Victorian style mixer tap, shower over bath with rain style shower head and handheld shower attachment, glass shower screen, vanity enclosed wash hand basin with mixer tap, part tiled walls, tiled flooring with underfloor heating, double glazed window with patterned glass to side aspect.

SEPARATE WC

Concealed cistern, dual flush low level wc, tiled flooring with underfloor heating, double glazed window with patterned glass to side aspect.

FRONT GARDEN

The property is set back from the road with an enclosed front garden. The garden is established with a variety of mature plants, shrubs and rose bushes, section of lawn.

REAR GARDEN

Lovely rear garden with a decked patio abutting the property, gates side access to the front, few steps down to the main section of garden which is laid to lawn with a established planted borders, variety of mature plants and shrubs, further patio located mid-way down the garden set beneath a fixed wooden pergola offering additional dealing area to entertain or eat alfresco. At the bottom of the garden there is an additional section of lawn, wooden shed and drying rack for clothes. This area is concealed from the main garden.

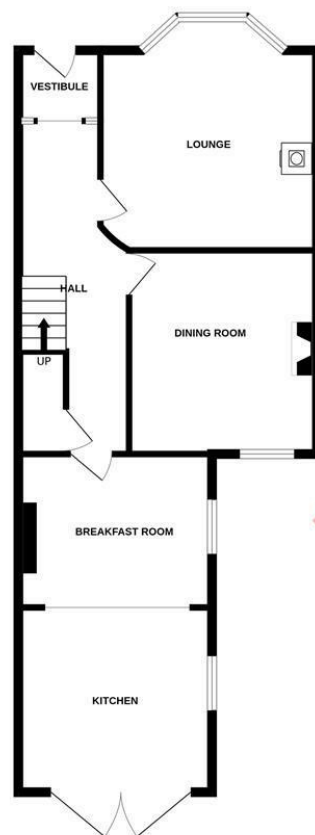
Council Tax Band: D







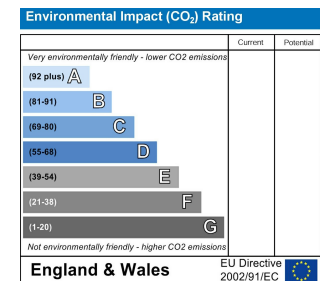
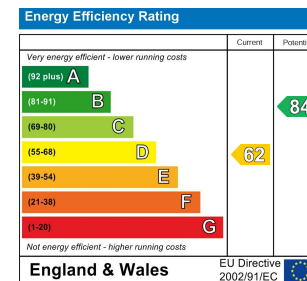
GROUND FLOOR



1ST FLOOR



Whilst every attempt has been made to ensure the accuracy of the floorplan contained here, measurements of doors, windows, rooms and any other items are approximate and no responsibility is taken for any error, omission or mis-statement. This plan is for illustrative purposes only and should be used as such by any prospective purchaser. The services, systems and appliances shown have not been tested and no guarantee as to their operability or efficiency can be given.
Made with Metropix ©2025



PCM endeavour to maintain accurate depictions of properties in Floor Plans and descriptions, however, these are intended only as a guide and purchasers must satisfy themselves by personal inspection. PCM have not tested any services, appliances, equipment or facilities, and nothing in these details should be deemed to be a statement that they are in good working order or that the property is in good structural condition or otherwise.