



254, Sedlescombe Road North, St Leonards-on-sea, TN37 7JL

Web: www.pcmestateagents.co.uk
Tel: 01424 839111

Offers Over £525,000

PCM Estate Agents are delighted to present to the market an opportunity to secure this OLDER STYLE FOUR BEDROOM DETACHED FAMILY HOME conveniently positioned in this sought-after region of St Leonards, close to a number of popular schooling establishments and nearby amenities. The property has a LARGE FAMILY FRIENDLY GARDEN, GARAGE and OFF ROAD PARKING for multiple vehicles.

Inside, the property offers a perfect balance between CHARACTER and MODERN COMFORTS with FIREPLACES, PICTURE RAILS, gas fired central heating and double glazing. The property has been EXTENDED off the back to offer additional living space.

The overall accommodation is arranged over two floors and comprises a spacious entrance hall, DOWNSTAIRS WC, lounge, SEPARATE DINING ROOM, kitchen being partially open plan to a BREAKFAST ROOM/ SNUG, first floor landing, FOUR BEDROOMS and a bathroom with bath and shower. The property offers well-appointed accommodation throughout and has been sympathetically improved over the years, creating a LOVELY FAMILY HOME.

Please call the owners agents now to book your viewing.

WOODEN FRONT DOOR

Leading to;

SPACIOUS ENTRANCE HALL

Stairs rising to upper floor accommodation, fireplace, radiator, exposed wooden floorboards, built in storage cupboard, telephone point, doors opening to:

DOWNSTAIRS WC

Low level wc, wash hand basin, radiator, wood effect vinyl flooring, double glazed obscured glass window to side aspect.

LIVING ROOM

17'8 max x 15'5 max (5.38m max x 4.70m max)

Spacious room with picture rail, television point, two radiators, fireplace with inset gas living flame fire, double glazed window to rear aspect with lovely views down the garden.

DINING ROOM

18'7 max x 16' into bay (5.66m max x 4.88m into bay)

Exposed wooden floorboards, picture rail, fireplace, two radiators, dual aspect with double glazed window to side, double glazed bay window to front aspect.

BREAKFAST ROOM/ SNUG

15'8 x 9'11 (4.78m x 3.02m)

Wall mounted column style vertical radiator, wood laminate flooring, coving to ceiling, down lights, door to side lobby, range of bespoke fitted base level units with worktop over, wall mounted Worcester boiler, double glazed window to side aspect, open plan to:

KITCHEN

14'7 x 12' (4.45m x 3.66m)

Modern and built with a matching range of eye and base level cupboards and drawers fitted with soft close hinges, worksurfaces and matching upstands, inset resin drainer-sink with mixer tap, waist level oven and separate grill, four ring induction hob, space for tall fridge freezer, integrated wine chiller, dishwasher, pull out bins, partially exposed brick feature, combination of down lights and pendant feature hanging lighting over an island offering additional storage space by way of cupboards and drawers, wood laminate flooring, dual aspect room with double glazed windows to side and rear elevations, double glazed French doors opening to garden.

SIDE LOBBY

Door opening to side elevation, space and plumbing for washing machine and tumble dryer, additional storage space.

FIRST FLOOR LANDING

Split level landing with wood panelled walls, double glazed window to aspect, main landing with loft hatch providing access to loft space with pull down ladder, airing cupboard, doors opening to:

BEDROOM ONE

17'9 x 16' into bay (5.41m x 4.88m into bay)

Picture rail, two radiators, wall mounted wash hand basin with tiled splashbacks, double glazed window to side and double glazed bay window to front.

BEDROOM TWO

12'7 x 12 (3.84m x 3.66m)

Built in storage cupboard, radiator, coving to ceiling, picture rail, wash hand basin with storage set beneath and mixer tap, double glazed window to rear aspect with lovely views over the garden and far reaching views towards the South Downs.

BEDROOM THREE

12'4 x 9'9 (3.76m x 2.97m)

Coving to ceiling, picture rail, radiator, wash hand basin with chrome mixer tap and storage set beneath, dual aspect room with double glazed windows to side and front elevations.

BEDROOM FOUR

9'7 x 9' (2.92m x 2.74m)

Coving to ceiling, picture rail, wall mounted wash hand basin, radiator, double glazed window to rear aspect with lovely views over the garden.

FAMILY BATHROOM/ SHOWER ROOM

Large bath with Victorian style mixer tap and shower attachment, walk in shower enclosure, pedestal wash hand basin, low level wc, ladder style heated towel rail, part tiled walls, wood effect vinyl flooring, radiator, ladder style heated towel rail, coving to ceiling, two double glazed windows with obscured glass to rear aspect.

OUTSIDE - FRONT

The property is set back from the road with fenced boundaries, driveway providing off road parking for multiple vehicles and access to:

ATTACHED GARAGE

17'4 x 10'9 (5.28m x 3.28m)

Electric up and over door, power and light, double doors to rear elevation opening to a storage room and workshop.

STORAGE ROOM

15'2 x 9'5 (4.62m x 2.87m)

Power and light, double glazed window to side aspect, door to side opening to the garden, door to rear aspect opening to:

WORKSHOP

14'9 x 9'1 (4.50m x 2.77m)

Power and light, workbench, double glazed window to side aspect.

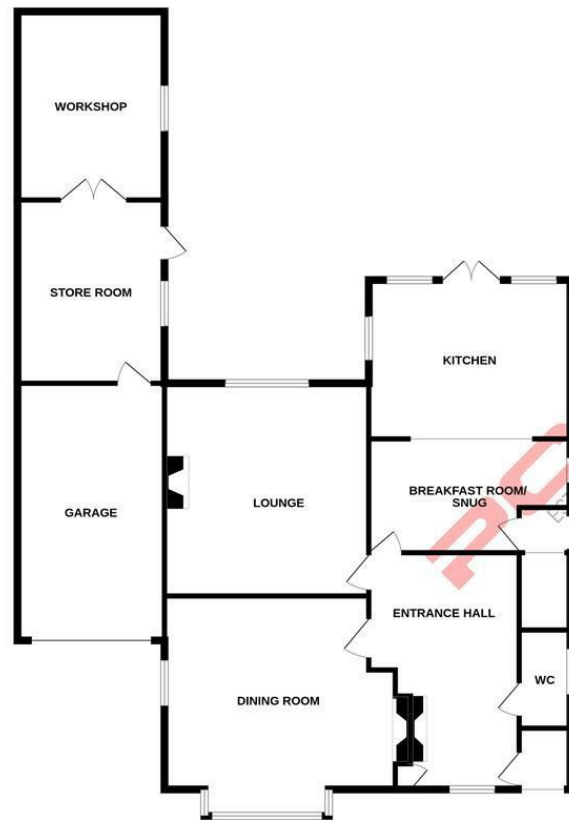
REAR GARDEN

Large and mainly laid to lawn, access to store room and workshop, well planted with a variety of mature shrubs, plants and small trees, enjoying a south-westerly aspect.

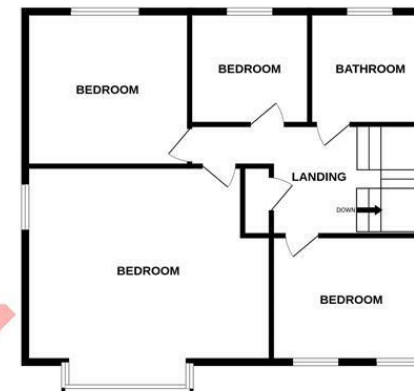
Council Tax Band: D



GROUND FLOOR



1ST FLOOR



Whilst every attempt has been made to ensure the accuracy of the floorplan contained here, measurements of doors, windows, rooms and any other items are approximate and no responsibility is taken for any error, omission or mis-statement. This plan is for illustrative purposes only and should be used as such by any prospective purchaser. The services, systems and appliances shown have not been tested and no guarantee as to their operability or efficiency can be given.
Made with Metropix ©2025

PCM endeavour to maintain accurate depictions of properties in Floor Plans and descriptions, however, these are intended only as a guide and purchasers must satisfy themselves by personal inspection. PCM have not tested any services, appliances, equipment or facilities, and nothing in these details should be deemed to be a statement that they are in good working order or that the property is in good structural condition or otherwise.

