



HIGH ROAD, ROMFORD, RM6

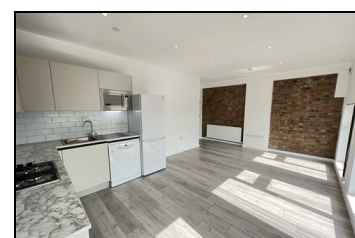
£1,350 PER MONTH

A modern 1 double bedroom flat arranged on the third floor. These spacious and luxurious flat comprises of contemporary reception / kitchen with Bosch appliances. Engineered wood flooring to most of the accommodation and fitted wardrobes to bedroom. Own private street entrance.

Available: 17th July 2026

Location: The property is conveniently located with an array of shops on the High Road itself. Excellent commute to Central London (approx 40 minutes to Bond Street / Liverpool Street and) from Chadwell Heath Station (Elizabeth line) which is within walking distance. Bus routes to Stratford and Seven Kings.

- 1 Double Bedroom
- Private Entrance
- Third Floor
- Modern Flat
- Wood Flooring



Energy Efficiency Rating		Environmental Impact (CO ₂) Rating	
Current	Potential	Current	Potential
80	80	C	C
<small> Energy Efficiency: Best - Lower running costs 100 (A+) 90 (A) 80 (B) 70 (C) 60 (D) 50 (E) 40 (F) 30 (G) </small>		<small> Environmental Impact: Best - Lower CO₂ emissions 100 (A+) 90 (A) 80 (B) 70 (C) 60 (D) 50 (E) 40 (F) 30 (G) </small>	
<small> Max energy efficient - Higher saving costs 100 (A+) 90 (A) 80 (B) 70 (C) 60 (D) 50 (E) 40 (F) 30 (G) </small>		<small> Max environmental friendly - Higher CO₂ emissions 100 (A+) 90 (A) 80 (B) 70 (C) 60 (D) 50 (E) 40 (F) 30 (G) </small>	
<small> England & Wales EPC 2008/18 EC </small>		<small> England & Wales EPC 2008/18 EC </small>	