



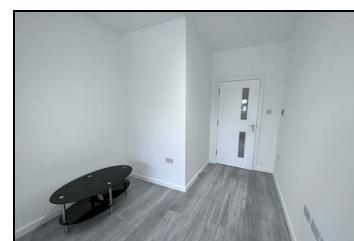
## ALBURY GROVE ROAD, WALTHAM CROSS, EN8

**£1,200 PER MONTH**

A 1 double bedroom apartment set on the first floor. Featuring a open plan reception / kitchen (fully fitted modern high gloss white units with a compliment of Bosch appliances), Fully tiled modern bathroom/wc and double glazed windows.

Available: 30th May 2026

Location: The property is conveniently located in the heart of Cheshunt Town Centre with good transport and ample shopping facilities. An excellent commute to Central London (30 minutes into Liverpool Street) from Cheshunt Overground which is approximately 10 minutes walk, Short drive away from A10 and M25. Grundy Park and sports grounds are also close by.



Energy Efficiency Rating		Environmental Impact (CO <sub>2</sub> ) Rating	
Current	Potential	Current	Potential
55	65	55	65
<p>Energy Efficiency Rating: Lower rating is better</p> <p>55 (Current) 65 (Potential)</p> <p>100-105 A 85-95 B 70-85 C 55-65 D 40-55 E 25-40 F 10-25 G</p> <p>Not energy efficient - Higher savings costs</p> <p>England &amp; Wales EU Directive 2002/91/EC</p>		<p>Environmental Impact (CO<sub>2</sub>) Rating: Lower CO<sub>2</sub> emissions is better</p> <p>55 (Current) 65 (Potential)</p> <p>100-105 A 85-95 B 70-85 C 55-65 D 40-55 E 25-40 F 10-25 G</p> <p>Not environmentally friendly - Higher CO<sub>2</sub> emissions</p> <p>England &amp; Wales EU Directive 2002/91/EC</p>	