



THE BROADWAY, MIDDLESEX, UB6

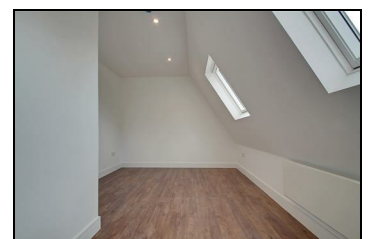
£1,500 PER CALENDAR MONTH

A 2 double bedroom, 2 bathroom top floor flat. The accommodation over 800 sqft, features contemporary reception/ kitchen both giving direct access to a private roof terrace with panoramic views. Modern bathroom and en-suite shower room to the master bedroom.

Available: Immediately

Location: The property is located in a parade of well-established shops. The property is well served by public transport with good road access to Central London via Western Avenue (A40) and Greenford Road.

- 2 Double Bedrooms
- 2 Bathrooms
- Private Roof Terrace
- Wood flooring
- Penthouse Flat



| Energy Efficiency Rating | | Environmental Impact (CO ₂) Rating | |
|--------------------------|-----------|--|-----------|
| Current | Potential | Current | Potential |
| 73 | 82 | 31 | 82 |

Energy Efficiency Rating: 73 (Current), 82 (Potential)

Environmental Impact (CO₂) Rating: 31 (Current), 82 (Potential)

England & Wales