



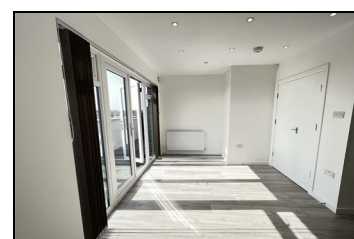
HIGH ROAD, ROMFORD, RM6

£1,300 PCM

A selection of 3 newly constructed 1 double bedroom flats arranged on the third floor. These spacious and luxurious flats comprises of contemporary reception / kitchen with Bosch appliances. Engineered wood flooring to most of the rooms. Private Balconies with panoramic views to most flats, fitted wardrobes to bedrooms. One of the flat has its own private entrance.

Available: Immediately.

Location: The property is conveniently located with an array of shops on the High Road itself. Excellent commute to Central London (approx 40 minutes to Bond Street / Liverpool Street and) from Chadwell Heath Station (Elizabeth line) which is within walking distance. Bus routes to Stratford and Seven Kings.



Energy Efficiency Rating		Environmental Impact (CO ₂) Rating	
Current	Potential	Current	Potential
100-109	A	100-109	A
81-100	B	81-100	B
62-80	C	62-80	C
43-61	D	43-61	D
25-42	E	25-42	E
10-24	F	10-24	F
1-9	G	1-9	G

Max energy efficient - Higher energy saving costs
 Max environmental friendly - Higher CO₂ emissions
 England & Wales
 EU Directive 2002/91/EC
 England & Wales
 EU Directive 2006/12/EC