



HIGH ROAD, ROMFORD, RM6

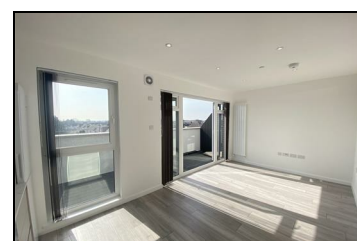
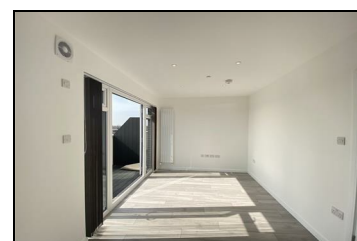
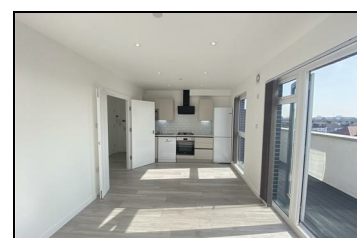
£1,300 PER MONTH

A modern 1 double bedroom flat arranged on the third floor. These spacious and luxurious apartment comprises of contemporary reception / kitchen with 'Bosch' appliances. Engineered wood flooring to most of the rooms. Private Balcony with panoramic views. Fitted wardrobes to bedroom.

Available: 1st July 2026

Location: The property is conveniently located with an array of shops on the High Road itself. Excellent commute to Central London (approx 40 minutes to Bond Street / Liverpool Street and) from Chadwell Heath Station (Elizabeth line) which is within walking distance. Bus routes to Stratford and Seven Kings.

- 1 Double Bedroom
- Wood Flooring
- Modern Open Plan Rec / Kit
- Modern Bathroom
- Private Balcony



Energy Efficiency Rating		Environmental Impact (CO ₂) Rating	
Current	Potential	Current	Potential
80	80	B	B
75	75	C	C
70	70	D	D
65	65	E	E
60	60	F	F
55	55	G	G

The energy efficient - higher saving costs
 The environmental friendly - higher CO₂ emissions
 England & Wales
 EPC (Energy Performance Certificate) 2023
 EPC (Environmental Performance Certificate) 2023