



The Ash, Apartment 1, Bridge House The Village, Prestbury, SK10 4DG

mosley jarman

The Ash, Apartment 1, Bridge House The Village, Prestbury, SK10 4DG

£2,295 Per Calendar Month

- Immaculate Two Bedroom Apartment
- Fully Furnished
- High Quality Fittings Throughout
- Central Village Location
- EPC Rating - B
- Garage and Parking





The Ash, Apartment 1, Bridge House The Village, Prestbury, SK10 4DG

Per Calendar Month £2,295 Per Calendar Month

An immaculate fully furnished ground floor apartment in the centre of Prestbury Village with the highest standard of fittings throughout.

Located within this exclusive development, the layout of The Ash consists of the entrance hall, breakfast kitchen with integrated NEFF appliances, living room with central gas fireplace and balcony, two bedrooms, two bathrooms (1 en-suite) with Villeroy & Boch sanitary ware and Hansgrohe fittings, office/bedroom three.

There is a tandem double garage providing ample parking and storage along with further spaces for residents and visitors.

Important Information

Parking - Garage plus residents and visitors spaces

Council Tax Band - G

EPC Rating - B

Heating - Gas central heating (Underfloor)

Mains services - Gas, Electric and Water

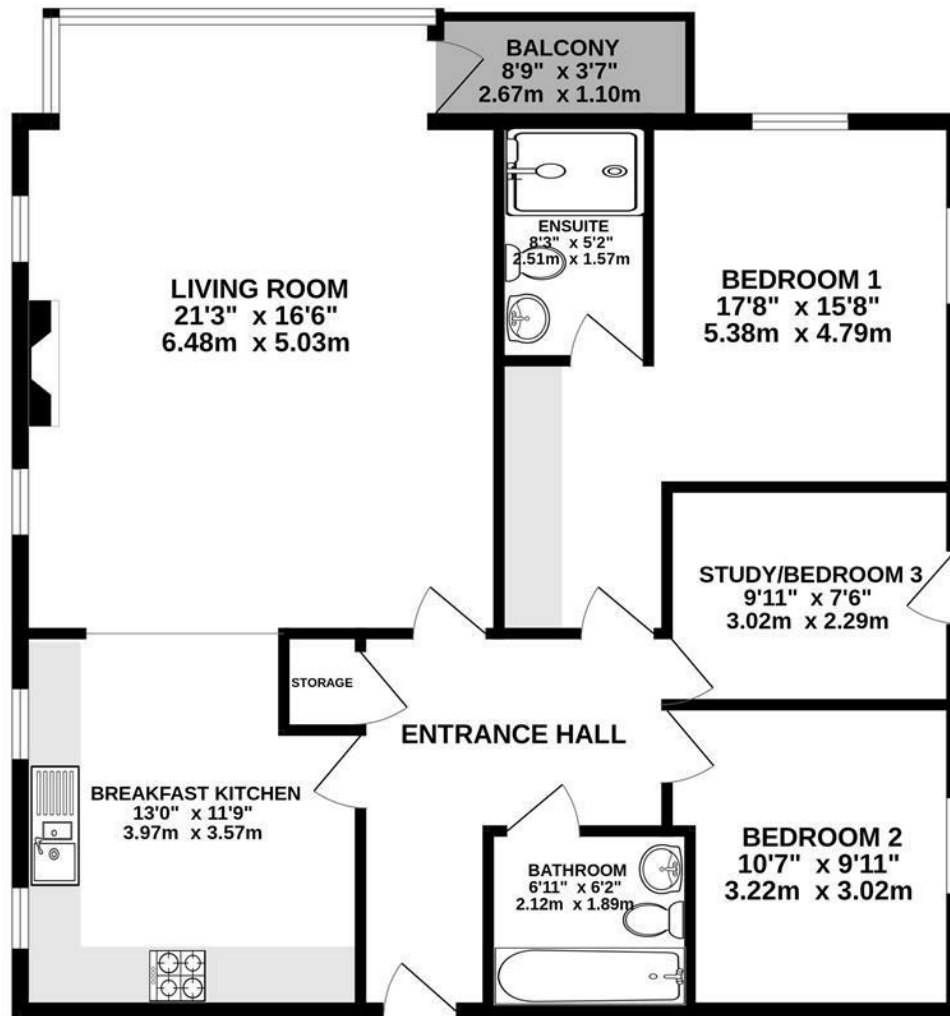
Refuse - Cheshire East Council operate a chargeable garden waste disposal service. For full details please visit cheshireeast.gov.uk/gardenbin

Broadband providers - Openreach. You may also be able to obtain broadband service from these Fixed Wireless Access providers covering your area for EE and Three

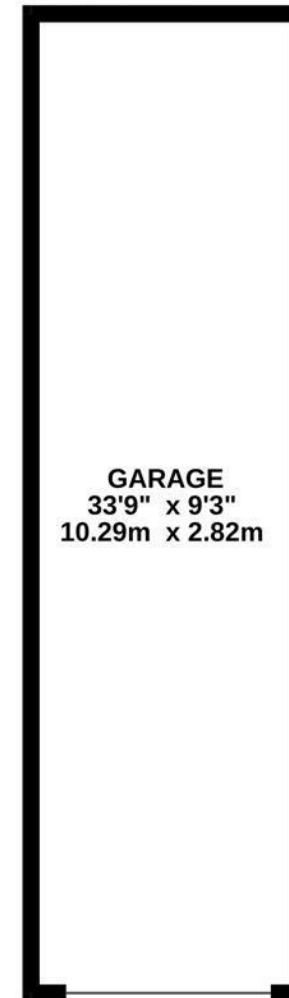
Mobile providers - 'Likely providers' are EE, Three, O2 and Vodafone



GROUND FLOOR 1344 sq.ft. (124.8 sq.m.) approx.



*Not shown in actual position/orientation



TOTAL FLOOR AREA : 1344 sq.ft. (124.8 sq.m.) approx.

Whilst every attempt has been made to ensure the accuracy of the floorplan contained here, measurements of doors, windows, rooms and any other items are approximate and no responsibility is taken for any error, omission or mis-statement. This plan is for illustrative purposes only and should be used as such by any prospective purchaser. The services, systems and appliances shown have not been tested and no guarantee as to their operability or efficiency can be given.
Made with Metropix ©2024

44 Alderley Road, Wilmslow, Cheshire SK9 1NY
Tel: 01625 444 899 Email: wilmslow@mosleyjarman.co.uk
www.mosleyjarman.co.uk

PROPERTY MISDESCRIPTION ACT 1991: The Agents has not tested any apparatus, equipment, fixtures and fittings, or services, so cannot verify that they are in working order or fit for the purpose. the buyer is advised to obtain verification from his or her Professional Buyer. References to the tenure of the proeprty are baed on information supplied by the Vendor. The agents have not had sight of the title documents. The buyer to obtain verification from their Solicitor. You are advised to check the availability of any property before travelling any distance to view.

