



28 Westwood House St. Hilarys Park, Alderley Edge, SK9 7DA

mosley jarman

28 Westwood House St. Hilarys Park, Alderley Edge, SK9 7DA

£2,250 Per Calendar Month

- A duplex apartment within a prestigious Alderley Edge development
- Flexible accommodation arranged over two levels (First and second floors)
- Set within a secure gated development
- Located in the heart of Alderley Edge village
- Two allocated parking bays and a pedestrian gate onto the high street
- Freshly decorated throughout
- Fully equipped kitchen including, washing machine, dishwasher, electric hob and double-oven, fridge/freezer and wine cooler
- Master bedroom with dressing room and ensuite bathroom
- EPC rating: C
- Council Tax Band: G (Cheshire East)





28 Westwood House St. Hilarys Park, Alderley Edge, SK9 7DA

Per Calendar Month £2,250 Per Calendar Month

An impressive two bedroom duplex-apartment set over two floors (first and second floors). Enjoying a position within the exclusive gated development of St. Hilary's Park, set on the outskirts of Alderley Edge village.

On the first floor, the property reveals an entrance hall, cloakroom with w/c, fully fitted kitchen with an adjoining dining room or spacious lounge, a double bedroom with an en suite, and a further bedroom or study. A staircase leads to a large master bedroom with fitted wardrobes and an en suite bathroom. Gas central heating. Externally, the property comes with two allocated parking spaces.

UNFURNISHED. AVAILABLE IMMEDIATELY.

IMPORTANT INFORMATION

Parking - Allocated parking for two cars within gated development. Allocated parking bays (for number 28) are bay 49 & bay 63

Heating - Gas central heating

EPC Grade: C (72/88)

Council Tax Band: G (Cheshire East)

Mains: Gas, Electric, Water

Flood Risk: Very low risk of flooding.

Refuse - Cheshire East Council operate a chargeable garden waste disposal service. For full details please visit cheshireeast.gov.uk/gardenbin

Broadband providers - Openreach. You may also be able to obtain broadband service from these Fixed Wireless Access providers covering your area for EE and Three

Mobile providers - Limited coverage by EE, O2, Three and Vodafone

*Broadband and mobile providers information taken from the Ofcom mobile and broadband checker





All our apa
increasingly
patterns.

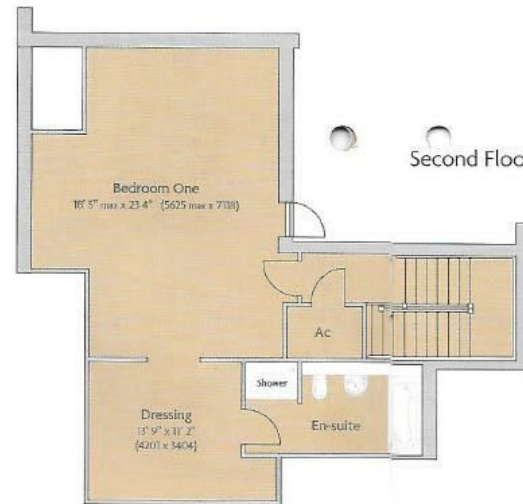


First Floor



Second Floor

Apartment location on levels



44 Alderley Road, Wilmslow, Cheshire SK9 1NY
Tel: 01625 444 899 Email: wilmslow@mosleyjarman.co.uk
www.mosleyjarman.co.uk

PROPERTY MISDESCRIPTION ACT 1991: The Agents has not tested any apparatus, equipment, fixtures and fittings, or services, so cannot verify that they are in working order or fit for the purpose. the buyer is advised to obtain verification from his or her Professional Buyer. References to the tenure of the proeprty are baed on information supplied by the Vendor. The agents have not had sight of the title documents. The buyer to obtain verification from their Solicitor. You are advised to check the availability of any property before travelling any distance to view.

