



Flat B 11 Grove Street, Wilmslow, Cheshire, SK9 1DU

*mosley jarman*



Flat B 11 Grove Street, Wilmslow, Cheshire, SK9 1DU

**£750 Per Calendar Month**

- Parking - No allocated parking.
- Heating - Underfloor electric heating
- Mains - Electric, and Water
- EPC Rating: C (79/79)
- Council Tax Band: A (Cheshire East)
- \*\*Flood Risk - Low Risk (Surface water).
- Refuse - Communal bins
- \*Broadband providers - Openreach
- \*Mobile providers - Likely coverage by Three, Vodafone, and O2. Limited coverage by EE.
- \*Information provided by Ofcom coverage checker and isn't guaranteed. Mosley Jarman take no responsibility for inaccuracies and advise potential tenants to do their own checks before committing to renting the property.
- \*\*Information provided by GOV.UK



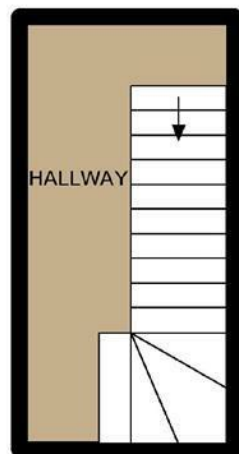


Flat B 11 Grove Street, Wilmslow, Cheshire, SK9 1DU

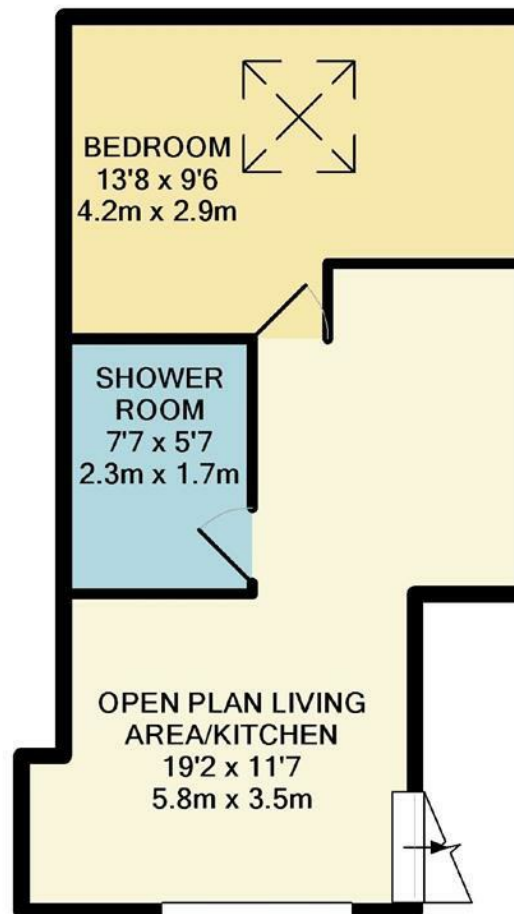
**Per Calendar Month £750 Per Calendar Month**

Contemporary living within the heart of Wilmslow centre. A transformed/converted second floor one bedroom apartment set within a sought after location right in the heart of the centre. A fabulous opportunity to enjoy contemporary living within the heart of Wilmslow. Accessed via an intercom system, a communal stairway leads to the first floor, and the apartment accessed from the first floor has a private stairway leading up to: Open-plan living room/kitchen with fitted appliances, double bedroom and quality shower-room. The property has double-glazing and underfloor electric heating. NO PARKING is provided with this property. UNFURNISHED. AVAILABLE: 1st of JULY 2025





GROUND FLOOR  
APPROX. FLOOR  
AREA 81 SQ.FT.  
(7.6 SQ.M.)



1ST FLOOR  
APPROX. FLOOR  
AREA 336 SQ.FT.  
(31.2 SQ.M.)

TOTAL APPROX. FLOOR AREA 417 SQ.FT. (38.8 SQ.M.)

Whilst every attempt has been made to ensure the accuracy of the floor plan contained here, measurements of doors, windows, rooms and any other items are approximate and no responsibility is taken for any error, omission, or mis-statement. This plan is for illustrative purposes only and should be used as such by any prospective purchaser. The services, systems and appliances shown have not been tested and no guarantee as to their operability or efficiency can be given

Made with Metropix ©2018

44 Alderley Road, Wilmslow, Cheshire SK9 1NY  
Tel: 01625 444 899 Email: wilmslow@mosleyjarman.co.uk  
[www.mosleyjarman.co.uk](http://www.mosleyjarman.co.uk)

**PROPERTY MISDESCRIPTION ACT 1991:** The Agents has not tested any apparatus, equipment, fixtures and fittings, or services, so cannot verify that they are in working order or fit for the purpose. the buyer is advised to obtain verification from his or her Professional Buyer. References to the tenure of the proeprty are baed on information supplied by the Vendor. The agents have not had sight of the title documents. The buyer to obtain verification from their Solicitor. You are advised to check the availability of any property before travelling any distance to view.

