



21 Wood Gardens, Alderley Edge, Cheshire, SK9 7PL

mosley jarman

21 Wood Gardens, Alderley Edge, Cheshire, SK9 7PL

£825 Per Calendar Month

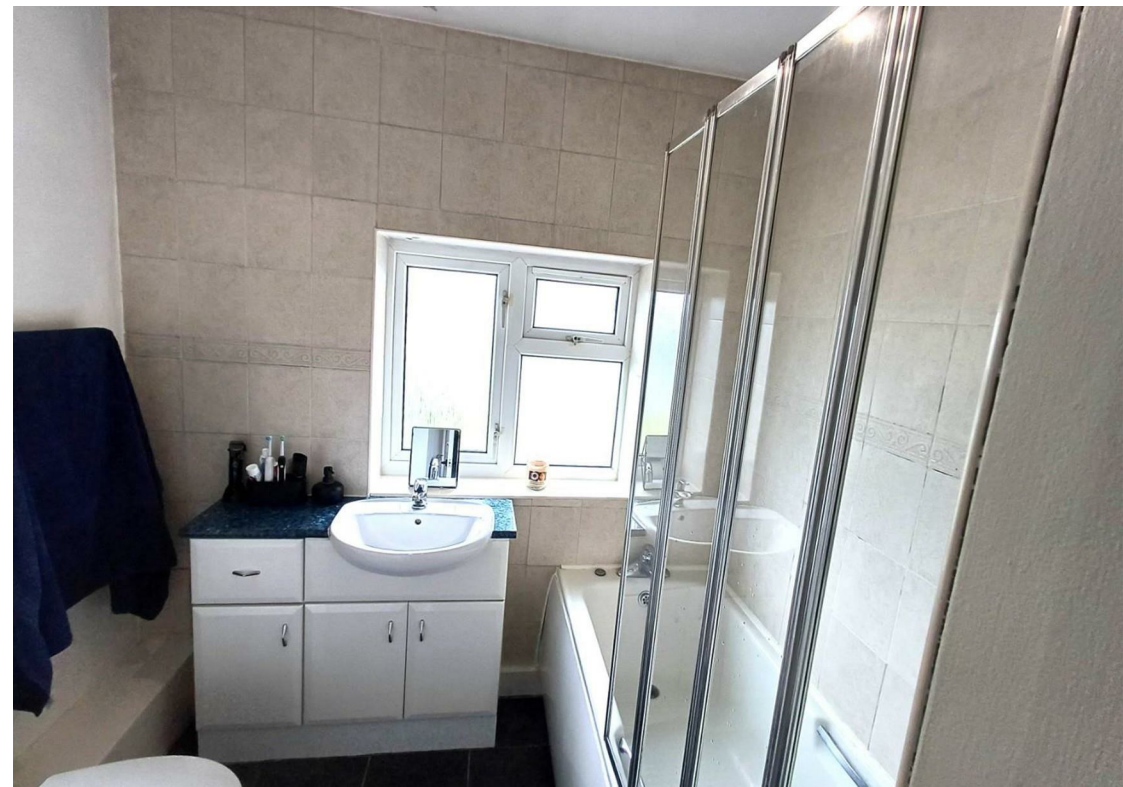
- Heating - Gas central heating
- Mains - Gas, electric, water and drainage
- EPC rating - D (64/68)
- Council Tax Band - A (Cheshire East)
- Refuse - Cheshire East Council operate a chargeable garden waste disposal service. Visit cheshireeast.gov.uk/gardenbin
- **Flood risk - Very Low (Surface water)
- Water Meter - TBC
- *Broadband - Openreach, and Virgin Media. You may also be able to obtain broadband service from these Fixed Wireless Access providers covering your area for EE.
- *Mobile - Likely coverage by EE, and Vodafone. Limited coverage by O2, and Three
- * Information provided by Ofcom checker and isn't guaranteed. Mosley Jarman take no responsibility for inaccuracies and advise potential tenants to do their own checks before committing to a tenancy. ** Information provided by GOV.UK



21 Wood Gardens, Alderley Edge, Cheshire, SK9 7PL

Per Calendar Month £825 Per Calendar Month

A second floor apartment within a purpose built development situated in a central Alderley Edge location within a short walk of the village, train station and close to local shops. The accommodation includes a hall (with storage cupboard and housing a washer/dryer), living room (15'4 x 12'0), kitchen (with modern high gloss units, fridge freezer, integrated electric oven and a four-ring electric hob). Double bedroom (12'0 x 12'0 with fitted wardrobes) and a bathroom (with white sanitary ware and plumbed-in shower over the bath. Chrome ladder towel rail). Gas central heating and Double glazed windows. There is on road parking and communal grounds.. FURNISHED. AVAILABLE: 13th of OCTOBER 2025





44 Alderley Road, Wilmslow, Cheshire SK9 1NY
 Tel: 01625 444 899 Email: wilmslow@mosleyjarman.co.uk
www.mosleyjarman.co.uk

PROPERTY MISDESCRIPTION ACT 1991: The Agents has not tested any apparatus, equipment, fixtures and fittings, or services, so cannot verify that they are in working order or fit for the purpose. the buyer is advised to obtain verification from his or her Professional Buyer. References to the tenure of the proeprty are baed on information supplied by the Vendor. The agents have not had sight of the title documents. The buyer to obtain verification from their Solicitor. You are advised to check the availability of any property before travelling any distance to view.

