



76b Knutsford Road, Wilmslow, Cheshire, SK9 6JD

mosley jarman &

76b Knutsford Road, Wilmslow, Cheshire, SK9 6JD

£1,300 Per Calendar Month

- Two-bedroom duplex apartment
- South Wilmslow Location
- Walking distance of the train station and local amenities
- Exceptionally well-presented
- Two bathrooms
- Allocated parking
- Private entrance





76b Knutsford Road, Wilmslow, Cheshire, SK9 6JD

Per Calendar Month £1,300 Per Calendar Month

An exceptionally well-presented and spacious two-bedroom, two-bathroom duplex apartment, ideally located just south of Wilmslow town centre and within walking distance of the train station and local amenities. This property combines traditional charm with modern touches, features partial double glazing, gas-fired central heating via a combination boiler, allocated parking. Accessed via an external staircase, the first floor opens onto a private entrance hallway. The inviting living room provides an excellent space for entertaining, while the modern fitted kitchen boasts contemporary matching wall and base units, integrated appliances, a breakfast bar, and under-stairs storage. The first double bedroom, also on the first floor, benefits from a stylish ensuite shower room. A staircase leads to the second characterful double bedroom, featuring a vaulted ceiling, Velux windows, and a modern ensuite shower room. FURNISHED. AVAILALE: IMMEDIATELY

Important Information

Council Tax Band: B

EPC grade: D

Heating - Gas central heating (radiators)

Mains - Gas, Electric, waters and drains

Property Construction- Brick built with tiled roof

Flood Risk*: Very low risk of flooding from rivers & seas. Medium risk of surface water flooding.

Broadband**: Openreach- FTTP (Fibre to the Premises). You may also be able to obtain broadband service from these Fixed Wireless Access providers covering your area for Virgin Media, EE & Three*

Mobile Coverage**: Mobile coverage at the property available with all main providers*. Some limited indoor & outdoor coverage.

Parking: Allocated parking available

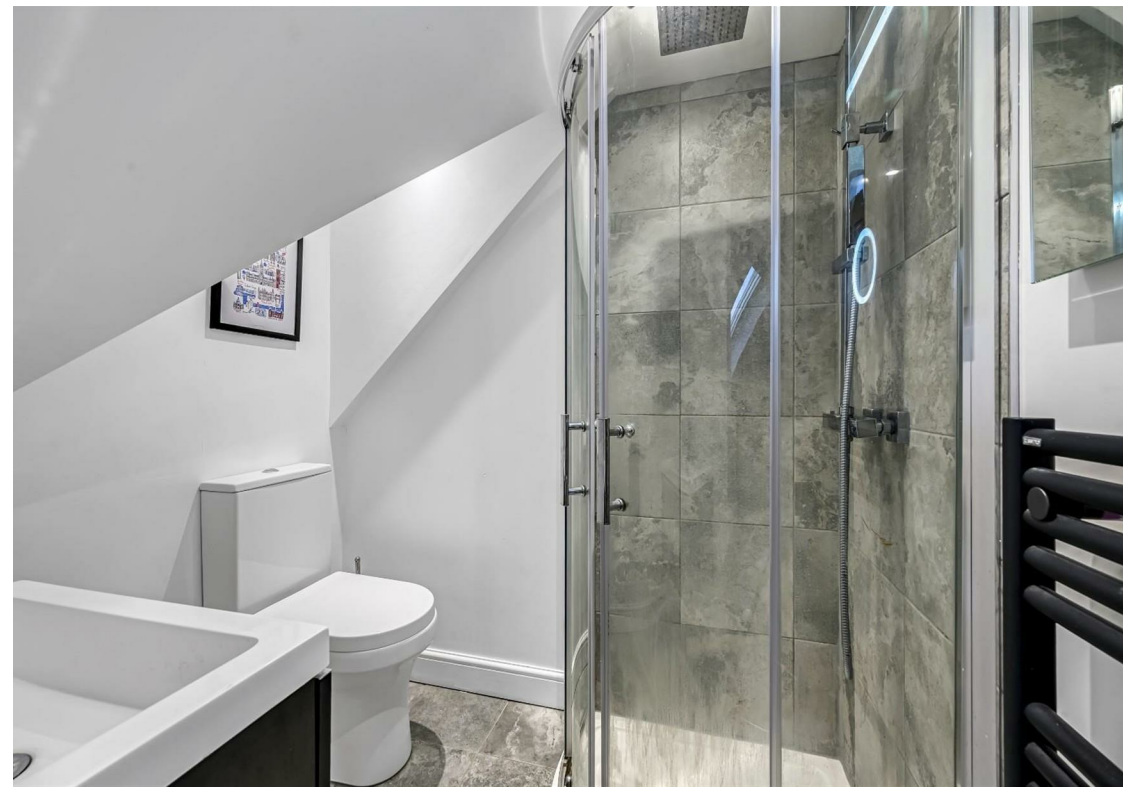
Rights of Way & Restrictive Covenants: Please contact Mosley Jarman for more information

Tenure:- Freehold

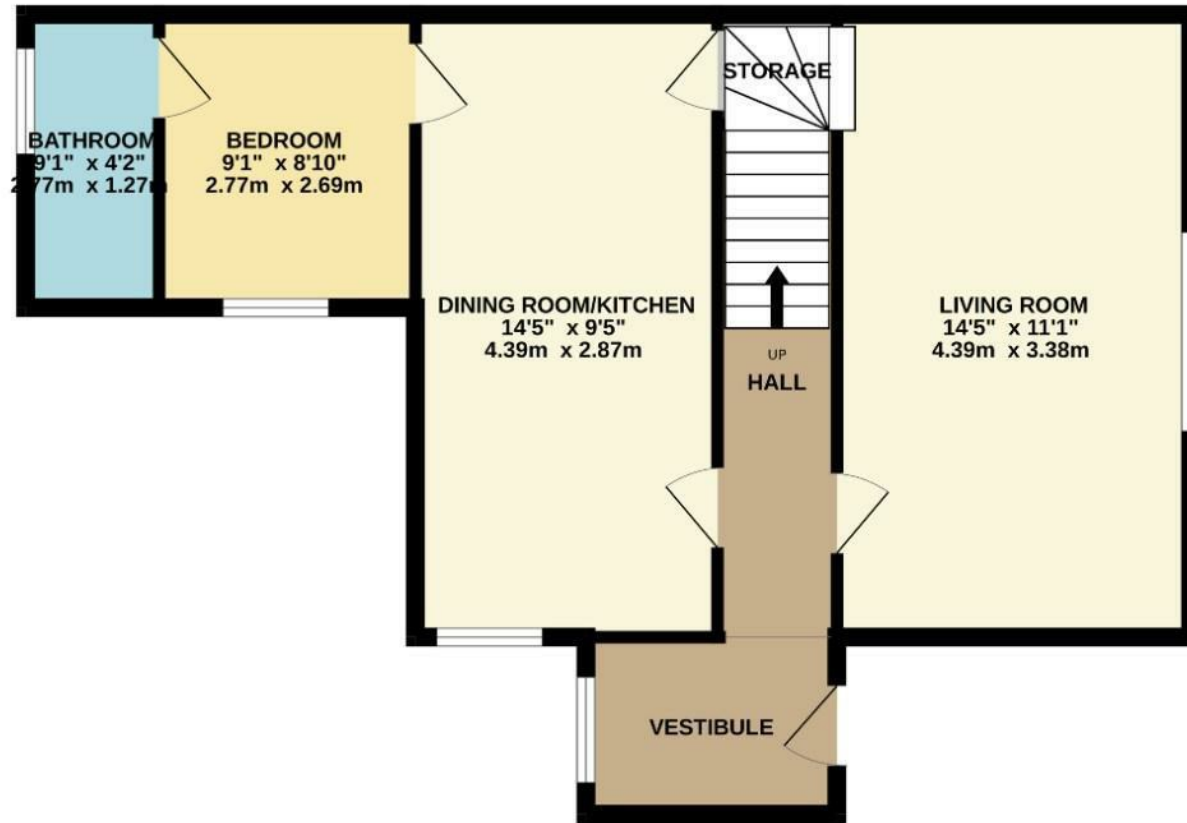
* Information provided by GOV.UK

**Information provided by Ofcom checker.

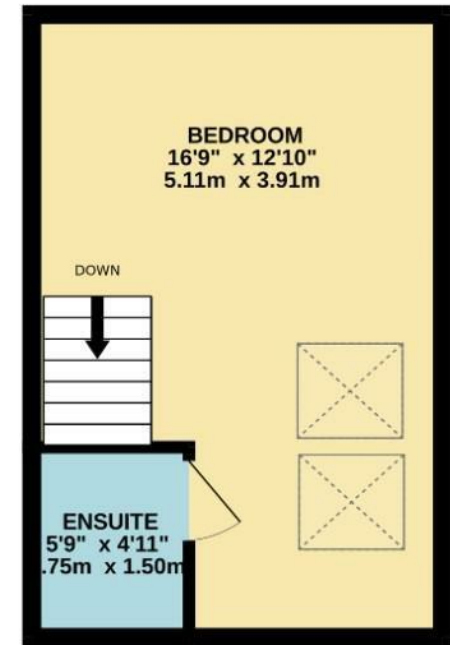
The information isn't guaranteed. Mosley Jarman take no responsibility for inaccuracies and advise potential buyers to do their own checks before committing to purchase.



FIRST FLOOR
627 sq.ft. (58.3 sq.m.) approx.



1ST FLOOR
250 sq.ft. (23.2 sq.m.) approx.



TOTAL FLOOR AREA : 877 sq.ft. (81.5 sq.m.) approx.

Whilst every attempt has been made to ensure the accuracy of the floorplan contained here, measurements of doors, windows, rooms and any other items are approximate and no responsibility is taken for any error, omission or mis-statement. This plan is for illustrative purposes only and should be used as such by any prospective purchaser. The services, systems and appliances shown have not been tested and no guarantee as to their operability or efficiency can be given.
Made with Metropix ©2025