

3 Church Cottages Church Lane

Knutsford, WA16 7RD



mosley jarman



3 Church Cottages Church Lane, Mobberley, Knutsford, WA16 7RD

£1,450 Per Month

A well-presented three double bedroom mid-mews home, designed in a period style and forming part of an exclusive, small development in a semi-rural setting. The property enjoys a peaceful position while remaining conveniently close to local amenities, with the popular towns of Knutsford, Alderley Edge and Wilmslow just a short drive away.

The accommodation briefly comprises a welcoming entrance hall leading to a generous living room, complete with a feature fireplace and French doors opening onto the rear garden. The modern kitchen is fitted with a range of integrated appliances and offers a practical and stylish space for everyday living.

To the first floor, a central landing leads to a family bathroom and two well-proportioned double bedrooms, one of which benefits from built-in storage. The second floor is dedicated to the principal bedroom, featuring fitted wardrobes, Velux-style windows allowing for plenty of natural light, and a modern en-suite shower room.



- Beautiful, private location
- Three double bedrooms
- Spacious living/dining room
- Within walking distance to local shops and pubs
- Two parking spaces
- Available immediately



The Grounds & Gardens

The property is part of an attractive development of similar homes, with a residents parking area to the front. The property comes with two specific allocated parking spaces. There is a private, enclosed garden to the rear, ideal for outdoor relaxation and entertaining.

The Location

The property is within a convenient distance of local shops and amenities in Mobberley, a charming and highly sought-after Cheshire village, known for its picturesque countryside, historic character, and strong sense of community. Surrounded by open farmland and scenic walking routes, it offers a peaceful rural setting while remaining conveniently located for access to nearby towns such as Knutsford, Wilmslow, and Altrincham. The village benefits from a well-regarded primary school, traditional pubs, and local amenities, as well as excellent transport links, including nearby rail connections and easy access to Manchester Airport. Combining countryside living with everyday convenience, Mobberley is an ideal location for those seeking a balance of tranquillity and connectivity.

Important Information

Council Tax Band: E

EPC: C

Heating - Gas central heating (radiators)

Mains - Gas, Electric, waters and drains

Broadband^{**}: To be confirmed.

Mobile Coverage^{**}: To be confirmed.

Parking: Two allocated parking spaces

Rights of Way - N.A

Water Metre - TBC

* Information provided by GOV.UK

**Information provided by Ofcom checker.

The information isn't guaranteed. Mosley Jarman take no responsibility for inaccuracies and advise potential buyers to do their own checks before committing to purchase.

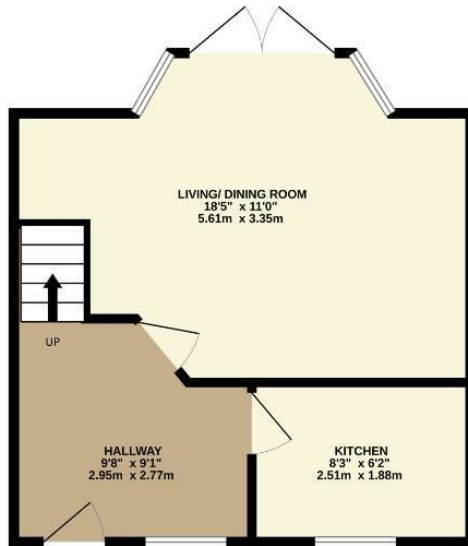
Postcode: WA16 7RD

What 3 Words: ///chapters.clays.ears

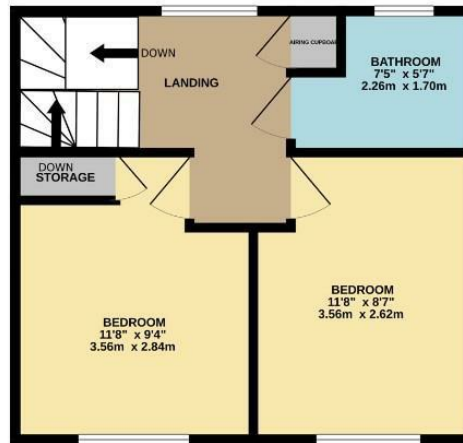
Council Tax Band: E

EPC Rating: C

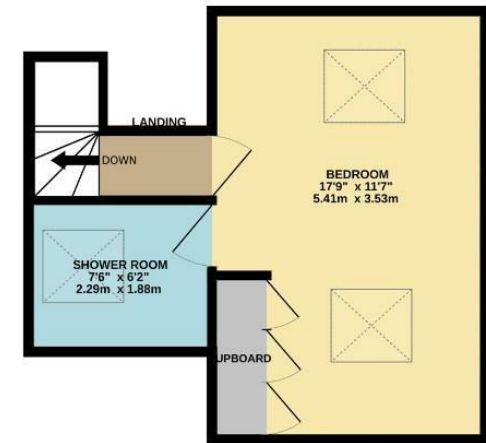
GROUND FLOOR
345 sq.ft. (32.1 sq.m.) approx.



1ST FLOOR
324 sq.ft. (30.1 sq.m.) approx.



2ND FLOOR
270 sq.ft. (25.1 sq.m.) approx.



TOTAL FLOOR AREA : 939 sq.ft. (87.2 sq.m.) approx.

Whilst every attempt has been made to ensure the accuracy of the floorplan contained here, measurements of doors, windows, rooms and any other items are approximate and no responsibility is taken for any error, omission or mis-statement. This plan is for illustrative purposes only and should be used as such by any prospective purchaser. The services, systems and appliances shown have not been tested and no guarantee as to their operability or efficiency can be given.

Made with Metropix ©2026

44 Alderley Road, Wilmslow, Cheshire, SK9 1NY

Email: wilmslow@mosleyjarman.co.uk

T: 01625 444899
www.mosleyjarman.co.uk

mosley jarman

PROPERTY MISDESCRIPTIONS ACT 1991: The Agents has not tested any apparatus, equipment, fixtures and fittings, or services, so cannot verify that they are in working order or fit for the purpose. The buyer is advised to obtain verification from his or her Professional Buyer. References to the Tenure of the property are based on information supplied by the Vendor. The agents have not had sight of the title documents. The buyer is advised to obtain verification from their Solicitor. You are advised to check the availability of any property before travelling any distance to view.