



An impressive two bedroom duplex-apartment set over two floors (first and second floors). Enjoying a position within the exclusive gated development of St. Hilary's Park , set on the outskirts of Alderley Edge village. On the first floor, the property reveals an entrance hall, cloakroom with w/c, fully fitted kitchen with an adjoining dining room or spacious lounge, a double bedroom with an en suite, and a further bedroom or study. A staircase leads to a large master bedroom with fitted wardrobes and an en suite bathroom. Gas central heating. Externally, the property comes with two allocated parking spaces. UNFURNISHED. AVAILABLE: 1st of July 2025



2



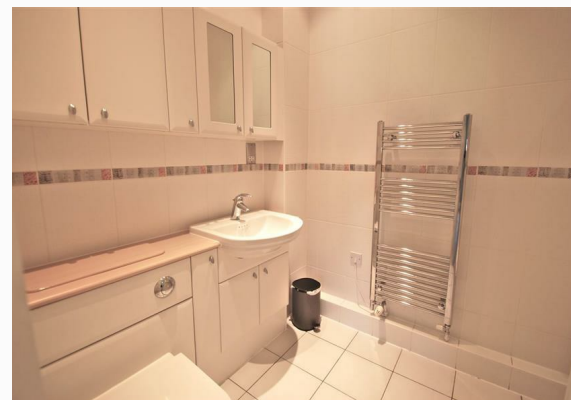
2



1



C



**28 Westwood House St.
Hilarys Park, Alderley Edge**

**Andrew J Nowell
& Company**

£2,500 Per Calendar Month

01625 585 905
mail@andrewjnowell.co.uk