



McCarthy & Stone
RESALES



15 Churchmead Court, Argents Mead, Hinckley, LE10 1FH
Asking price £245,000 LEASEHOLD

For further details
please call 0345 5564104

15 Churchmead Court, Argents Mead, Hinckley, LE10 1FH

~SPACIOUS TWO BED RETIREMENT APARTMENT WITH EN-SUITE BATHROOM LOCATED ON THE FIRST FLOOR~

Churchmead Court

Churchmead Court is our stunning development located in the market town of Hinckley, situated in the county of Leicestershire. Hinckley has a wide and varying history, dating back to its 13th century medieval churches, which still stand today – such as St Mary's Church. Visitors and homeowners alike can enjoy a stroll along the Ashby Canal, stopping for a bite to eat at the restaurant that overlooks the marina; perfect for a relaxing afternoon. The Leisure Centre opposite the development offers a variety of activities, including free swimming sessions for the over 60's. Argents Mead park is situated adjacent to Churchmead Court where many events are regularly taking place and the town centre is just a short stroll away from there.

Churchmead Court has been designed and constructed for modern living and winner of Housing for Older People Award 2019. The apartments boast Sky/Sky+ connection points in living rooms, fitted wardrobes in main bedroom and security door entry systems. The dedicated House Manager is on site during working hours to take care of things and make you feel at home. There's no need to worry about the burden of maintenance costs as the service charge covers the cost of all external maintenance, gardening and landscaping, external window cleaning, buildings insurance, water rates and security systems. All energy costs of the homeowners lounge and other communal areas are also covered in the service charge. For your peace of mind the development has camera door entry and 24-hour emergency call systems, should you require assistance.

The Homeowners' lounge provides a great space to socialise with friends and family. If your guests have travelled from afar, they can extend their stay by booking into the development Guest Suite (usually for a fee of £25 per night - subject to availability). Churchmead Court offers an extensive social activity schedule for Homeowners to enjoy as much or as little as they wish. Events such as; Games Night; Music Morning; Sunday Stroll; Film Night; Themed & Seasonal Events. It is a condition of purchase that residents must meet the age requirement of 60 years or over.

Entrance Hall

Double door to walk in storage cupboard housing the plumbed in washer dryer. A further five doors lead into the shower room, living room and two bedrooms, and a cupboard housing the electric meters and heating programmer. 24-hour Tunstall emergency call system. Illuminated light switches and smoke detector.

Living Room

A bright and airy room benefitting from a large full height double glazed window. There's ample room for a dining table. TV point (with Sky connectivity - connection charges may apply) and telephone phone points. Two ceiling lights points. Part glazed door leading to the kitchen.

Kitchen

A modern high gloss kitchen fitted with a range of ivory base and wall units. The wall units house under unit spot lighting. Integrated fridge and freezer. Easy access Bosch oven with space above for a microwave. Four ringed hob with splash back and chrome extractor hood. Stainless steel sink unit with single drainer and mixer tap. Tiled floor. Ceiling down lights.

Master Bedroom

Large full height double glazed window provides plenty of natural light to this master bedroom. Ceiling light and spotlights over the entrance. TV and telephone points. Power point. Door to walk in wardrobe with ample hanging space and shelving.

En Suite Bathroom

Part tiled bathroom with shower over and grab rail. WC. Vanity unit with inset wash hand basin and illuminated mirror above. Emergency pull cord. Heated towel rail. Floor tiling.

Bedroom Two

A generously sized second double bedroom. Patio doors with a Juliette balcony. Two ceiling light points. TV point. Power points.

Shower Room

Part tiled shower room with a large shower cubicle with sliding door, pull down seat and grab rail. WC. Vanity unit with inset

wash hand basin. Fitted mirror with light and shaver point. Emergency pull cord. Heated towel rail.

Service Charge

- Cleaning of communal windows
- Water rates for communal areas and apartments
- Electricity, heating, lighting and power to communal areas
- 24-hour emergency call system
- Upkeep of gardens and grounds
- Repairs and maintenance to the interior and exterior communal areas
- Contingency fund including internal and external redecoration of communal areas
- Buildings insurance

The Service charge does not cover external costs such as your Council Tax, electricity or TV, but does include the cost of your House Manager, your water rates, our 24-hour emergency call system, the heating and maintenance of all communal areas, exterior property maintenance and gardening. To find out more about the service charges please contact your Property Consultant or House Manager

Ground Rent

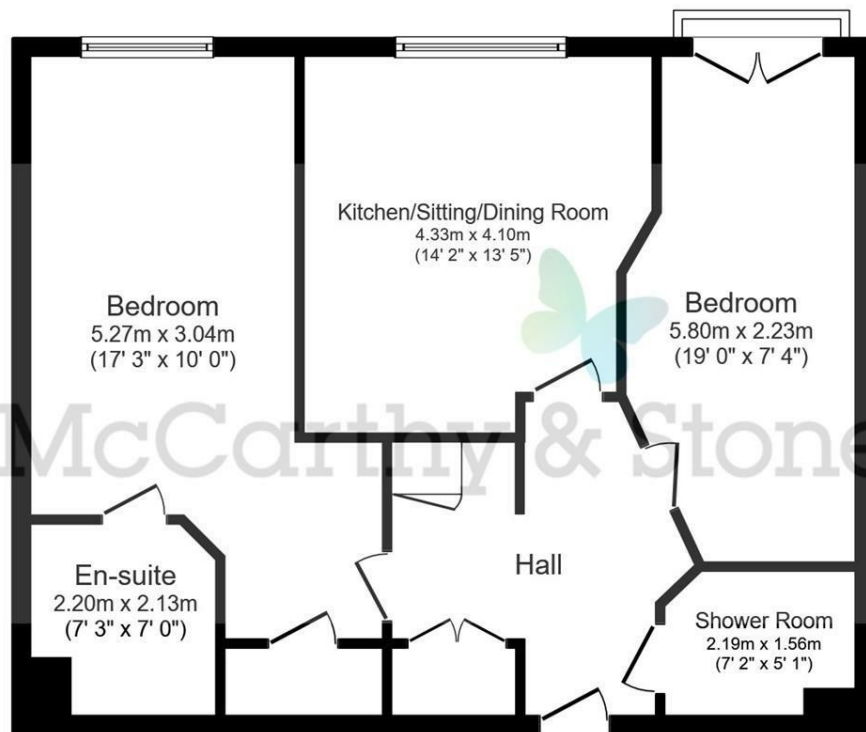
Annual fee - £495

Lease Information

999 years from 1st January 2016







Floor Plan

Total floor area 72.0 sq. m. (775 sq. ft.) approx

This floor plan is for illustrative purposes only. It is not drawn to scale. Any measurements, floor areas (including any total floor area), openings and orientation are approximate. No details are guaranteed, they cannot be relied upon for any purpose and they do not form part of any agreement. No liability is taken for any error, omission or misstatement. A party must rely upon its own inspection(s). Plan produced for McCarthy & Stone. Powered by www.focalagent.com



Energy Efficiency Rating		
	Current	Potential
Very energy efficient - lower running costs		
(92 plus) A		
(81-91) B		
(69-80) C		
(55-68) D		
(39-54) E		
(21-38) F		
(1-20) G		
Not energy efficient - higher running costs		
	86	86
England & Wales	EU Directive 2002/91/EC	

Environmental Impact (CO ₂) Rating		
	Current	Potential
Very environmentally friendly - lower CO ₂ emissions		
(92 plus) A		
(81-91) B		
(69-80) C		
(55-68) D		
(39-54) E		
(21-38) F		
(1-20) G		
Not environmentally friendly - higher CO ₂ emissions		
	87	87
England & Wales	EU Directive 2002/91/EC	

There is an event fee which is applicable to the property upon sale, for further details please contact our Property Consultant.

The Consumer Protection from Unfair Trading Regulations 2008 (CPR's)

These details are produced for guidance purposes only and therefore complete accuracy cannot be guaranteed. If there is any particular point which is of importance to you, we recommend verification should be obtained. These details do not constitute a contract or part of a contract. All measurements are approximate. No apparatus, equipment, fixture or fitting has been tested. Items shown in the photographs are not necessarily included in the sale. Any interested Parties are advised to check availability and make an appointment to view before travelling to see a property to avoid any wasted time or travel costs.

Please contact us if you require a larger print version

For further details, please call 0345 5564104 or email resales@mccarthyandstone.co.uk

McCarthy & Stone Resales Limited, 100 Holdenhurst Road, Bournemouth, Dorset, BH8 8AQ

T: 0345 5564104 - www.mccarthyandstoneresales.co.uk

Registered Office: 100 Holdenhurst Road, Bournemouth, Dorset, BH8 8AQ

Registered in England and Wales No. 10716544