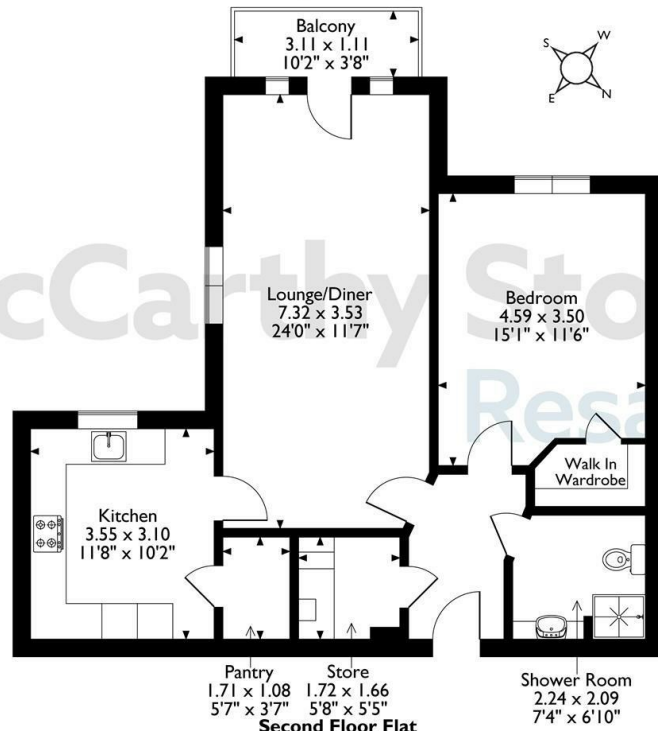
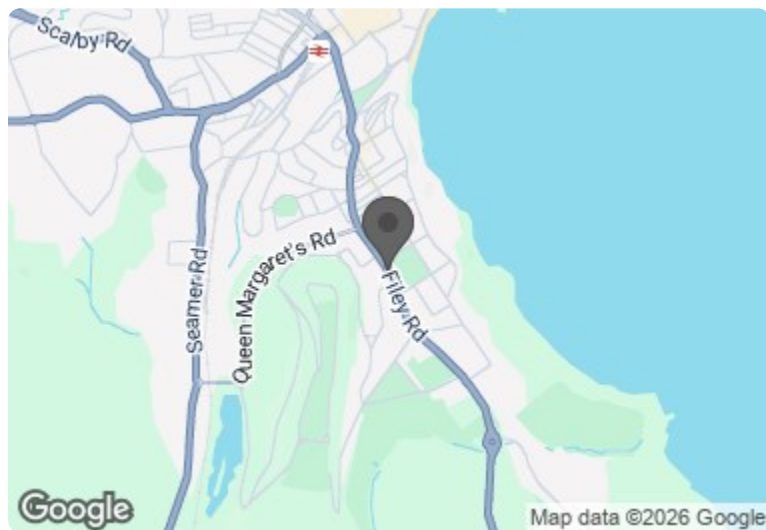


Sycamore Court, Apartment 27, 26, Filey Road, Scarborough  
Approximate Gross Internal Area  
71 Sq M/764 Sq Ft



The position & size of doors, windows, appliances and other features are approximate only.  
© ehous. Unauthorised reproduction prohibited. Drawing ref. dig/8654347/DST.

**Council Tax Band: D**



| Energy Efficiency Rating                    |                         |           |
|---|-------------------------|-----------|
|   | Current                 | Potential |
| Very energy efficient - lower running costs |                         |           |
| (92 plus) <b>A</b>                          |                         |           |
| (81-91) <b>B</b>                            |                         |           |
| (69-80) <b>C</b>                            |                         |           |
| (55-68) <b>D</b>                            |                         |           |
| (39-54) <b>E</b>                            |                         |           |
| (21-38) <b>F</b>                            |                         |           |
| (1-20) <b>G</b>                             |                         |           |
| Not energy efficient - higher running costs |                         |           |
| <b>England &amp; Wales</b>                  | <b>82</b>               | <b>82</b> |
|   | EU Directive 2002/91/EC |           |

This floor plan is not drawn to scale and is for illustrative purposes only. Any measurements, floor areas (including any total floor area), openings and orientation are approximate and for guidance only. McCarthy Stone Resales do not take liability for any error, omission or misstatement. All parties must rely on their own inspections. It should not be assumed that any furniture or fittings contained in the photographs are included in any sale. All details referring to time and distances to localities are approximate. Details regarding any common charges and other applicable fees are provided by the seller and should not be relied on without verification and further checks made through a solicitor/conveyancer. Please contact the Property Consultant for further information that Appliances (including central heating) have not been tested, therefore it cannot be assumed that they are in good working order. All interested parties are advised to check availability and make an appointment before travelling to view the property to avoid disappointment or wasted time or travel expenses. The details contained within this brochure are for information purposes only and do not form part of any agreement. All purchases will be subject to contract terms. © All artwork (photos and floorplans) and written content are the sole property and copyright of McCarthy & Stone Resales Limited and are legally protected by UK & International copyright laws. Under no circumstance may you download, reproduce, publish or distribute any content for commercial purposes, without prior written permission from McCarthy Stone Resales.

McCarthy & Stone Resales Limited, Trading as McCarthy Stone Resales  
Registered Office: 100 Holdenhurst Road, Bournemouth, Dorset, BH8 8AQ.  
Registered in England and Wales No. 10716544



**27 Sycamore Court**

Filey Road, Scarborough, YO11 2DZ

**PRICE REDUCED**



**PRICE REDUCTION**

**Asking price £160,000 Leasehold**

This larger-than-average retirement apartment is perfect for those over 70 seeking comfort and convenience. The property features a welcoming reception room, a well-appointed bedroom, and a modern bathroom. Additionally, it offers parking for one vehicle, ensuring ease of access. A delightful opportunity awaits!

**Call us on 0345 556 4104 to find out more.**

resales@mccarthyandstone.co.uk | mccarthyandstoneresales.co.uk

# Filey Road, Scarborough

## Moving Made Easy

Moving is a huge step, but don't let that hold you back. We have a range of services to help your move go smoothly, including:

- FREE Entitlements Advice to help you find out what benefits you may be entitled to that can assist with service charges or living costs.
- Part Exchange service to help you move without the hassle of having to sell your own home.
- Removal Services that can help you declutter and move you in to your new home.
- Conveyancing specialists who are experienced with sales and purchases of McCarthy Stone retirement properties.

For more information speak with our Property Consultant today.

## Summary

Available exclusively for those over 70, Sycamore Court is a development of 54 one and two bedroom retirement apartments with views towards Scarborough Castle and the surrounding sea, making it one of the most beautiful spots in the area.

The development features excellent security systems including 24 hour, 365 days a year onsite staffing, an onsite bistro providing freshly prepared meals and snacks and 1 hour of domestic assistance each week. Furthermore, there's lift access throughout, so it's easy for residents to get around. Residents benefit from a social lounge, where you can relax and catch up with friends, as well as a sun room room with balcony. The guest suite is perfect for visitors and outside to the rear there is also a private car park.

The apartments are spacious and comfortable, offering a cosy atmosphere that will make you feel at home right away. Fully fitted kitchens include an integrated fridge/freezer, an oven with ceramic hob and a stainless steel sink. Through to the living room, you'll find a large, airy space that's ideal for relaxing and enjoying the peace and quiet. In the bedroom, you'll discover a walk-in wardrobe and carpet throughout, while the level access shower room is conveniently tiled and includes various safety features, such as easy grip rails and non-slip flooring.

## Local Area

The development is just a mile away from a Tesco supermarket and there are bus stops 500 yards away that take you to the town centre, train station and further afield. Scarborough train station has regular services to York and surrounding towns, while the development is easily accessed by road via the A64 to York and Leeds, the A165 to Bridlington, and the A171 to Whitby.

Scarborough has plenty of things to see and do. Once primarily a seaside resort, it's now also home to many cultural attractions, including live theatres, creative arts centres and museums. The annual Scarborough Jazz Festival is held at the historic Scarborough Spa every September, while another festival, Seafest, sees folk singers, shantymen, musicians and artists flock to the harbour to put on a not-to-be-missed show!

The beaches in Scarborough are not only a great place to visit in summer, but also the starting point to explore along the Yorkshire coast. South Sands has an outer harbour for pleasure boats and yachts, where you can take a trip out around the bay. Head further north to find the North York Moors National Park, full of birds and deer, or go down south to the world famous Bempton Cliffs, where you'll find puffins and gannets.

## Entrance Hall

Front door with spy hole leads to the entrance hall - the emergency response pull cord system is situated in the hall. From the hallway there is a door to a walk-in storage cupboard / airing cupboard. Illuminated light switches, smoke detector, apartment security door entry system with intercom. Doors lead to the lounge, bedrooms and shower room.

## Lounge

A bright and spacious living room with UPVC double glazed French doors leading onto a large balcony which offers pleasant views. Ample space for dining furniture. Feature fireplace. Two ceiling lights, TV and telephone points. Raised electric power sockets. A partially glazed door leads into the kitchen.

## Kitchen

Exceptionally spacious and well-appointed kitchen, featuring a comprehensive range of cream gloss wall and base units with soft-close drawers, all topped with granite-effect roll-top work surfaces. A stainless steel sink and drainer with mono-lever tap is positioned beneath a large UPVC window, providing excellent natural light. The kitchen includes an integrated fridge/freezer, a

# 1 Bed | £160,000

PRICE  
REDUCED

waist-height electric oven, ceramic hob, and an extractor hood above. Additional features include tiled flooring, under-counter lighting, ample power points, a central ceiling light, radiator, and a useful walk-in pantry.

## Main bedroom

Spacious double bedroom with large walk in dressing room. UPVC double glazed window, radiator, TV and telephone points. Ceiling light, fitted carpets, raised electric power sockets and 24-hour emergency response pull cord.

## Shower room

Partially tiled and fitted with suite comprising of level walk-in shower with adjustable shower head and hand rail, WC, vanity unit with sink, cupboard storage and illuminated mirror above. Heated chrome towel rail, 24-hour emergency response pull cord and tiled flooring.

## Service Charge

- Cleaning of communal windows
- Water rates for communal areas and apartments
- Electricity, heating, lighting and power to communal areas
- Window Cleaning (outside only)
- 24-hour emergency call system
- Upkeep of gardens and grounds
- Repairs and maintenance to the interior and exterior communal areas
- Contingency fund including internal and external redecoration of communal areas
- Buildings insurance
- One hour of domestic support per week is included in the service charge
- Care staff on-site 24-hours a day
- Running of the on-site restaurant
- Intruder alarm system

The annual service charge is £10,894.36 for the financial year ending 30/09/2026. The Service charge does not cover external costs such as your Council Tax, electricity or TV. To find out more about service charges please contact your Property Consultant or Estates Manager.

## Car Parking

A parking space is included in the sale of the apartment.

## Storage Room

A valuable addition to this apartment is the external storage room included in the sale – perfect for keeping everything from suitcases to golf clubs out of sight but easily accessible.

## Leasehold Information

Lease: 999 years from 1st Jan 2018  
Ground rent: £510 per annum  
Ground rent review: 1st Jan 2033  
Managed by: Your Life Management Services



McCarthy Stone

McCarthy Stone

McCarthy Stone  
Resales