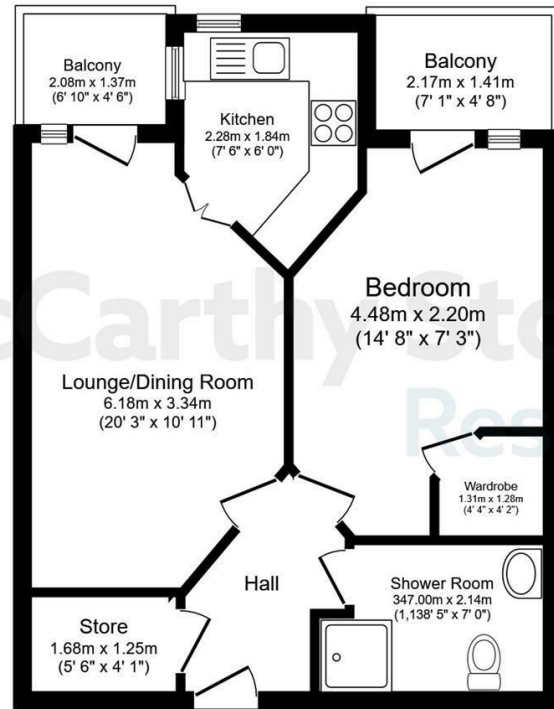


28 Mandeville Court

Darkes Lane, Potters Bar, EN6 1BZ



Total floor area 44.7 sq.m. (481 sq.ft.) approx
 This floor plan is for illustrative purposes only. It is not drawn to scale. Any measurements, floor areas (including any total floor area), openings and orientation are approximate. No details are guaranteed, they cannot be relied upon for any purpose and they do not form part of any agreement. No liability is taken for any error, omission or misstatement. A party must rely upon its own inspection(s). Powered by www.focalagent.com

Council Tax Band: E



Energy Efficiency Rating		Current	Potential
Very energy efficient - lower running costs			
(92 plus) A			
(81-91) B		86	86
(69-80) C			
(55-68) D			
(39-54) E			
(21-38) F			
(1-20) G			
Not energy efficient - higher running costs			
England & Wales	EU Directive 2002/91/EC		

Asking price £210,000 Leasehold

A ONE BEDROOM apartment which benefits from a modern kitchen with BUILT IN APPLIANCES, double bedroom with a WALK-IN WARDROBE and a shower room which completes this lovely apartment. This apartment boasts TWO WALK OUT BALCONIES. The development offers EXCELLENT COMMUNAL FACILITIES including a dining room, landscaped gardens and a communal lounge where SOCIAL EVENTS take place. Mandeville Court, a McCarthy Stone retirement living development is nestled in Potters Bar. Seller is open to including some of the furniture within the sale.

Entitlements Advice and Part Exchange available

Call us on 0345 556 4104 to find out more.

resales@mccarthyandstone.co.uk | mccarthyandstoneresales.co.uk

This floor plan is not drawn to scale and is for illustrative purposes only. Any measurements, floor areas (including any total floor area), openings and orientation are approximate and for guidance only. McCarthy Stone Resales do not take liability for any error, omission or misstatement. All parties must rely on their own inspections. It should not be assumed that any furniture or fittings contained in the photographs are included in any sale. All details referring to time and distances to localities are approximate. Details regarding any common charges and other applicable fees are provided by the seller and should not be relied on without verification and further checks made through a solicitor/conveyancer. Please contact the Property Consultant for further information. Appliances (including central heating) have not been tested, therefore it cannot be assumed that they are in good working order. All interested parties are advised to check availability and make an appointment before travelling to view the property to avoid disappointment or wasted time or travel expenses. The details contained within this brochure are for information purposes only and do not form part of any agreement. All purchases will be subject to contract terms. © All artwork (photos and floorplans) and written content are the sole property and copyright of McCarthy & Stone Resales Limited and are legally protected by UK & International copyright laws. Under no circumstance may you download, reproduce, publish or distribute any content for commercial purposes, without prior written permission from McCarthy Stone Resales. Unauthorised duplication or usage for



Mandeville Court, Darkes Lane, Potters Bar, Hertfordshire, EN6 1BZ

Mandeville Court

Mandeville Court in Potters Bar, Hertfordshire, is just 18 miles north of Central London. Being just half a mile from the main line train station should satisfy those who enjoy a day trip into the city. Cockfosters tube station is 4.5 miles from Mandeville Court and can be reached by public transport which runs past Mandeville Court. Potters Bar itself benefits from an array of shops and amenities, including a swimming pool and leisure centre, a tennis club, cricket club and golf course. Mandeville Court is one of McCarthy Stones Retirement Living PLUS range (formally Assisted Living) and is facilitated to provide it's homeowners' with extra care. An Estates Manager is on hand to manage the day to day running of the development and attend to any queries you may have. Within the service charge homeowners are allocated 1 hours domestic assistance per week, however, additional hours can be arranged by prior appointment. There are a range of personal care packages to suit your requirement, speak to your Estate Manager for further details.

The development has a homeowners' lounge which is a superb venue for socialising with friends and family. If your guests have travelled from afar, they can extend their stay by booking into the development Guest Suite (usually for a fee of £25 per night - subject to availability) which has an en-suite shower room, tea and coffee making facilities and a TV. For added convenience there is an onsite waitress service restaurant with freshly cooked meals provided everyday. It is a condition of purchase that residents must meet the age requirement of 70 years of age or over.

Living Room

Spacious living room with ample room for dining and comfortable seating. TV and telephone points. Two ceiling lights. Power sockets. Partially glazed double

doors open onto the separate kitchen. Access to a walk out balcony. Economy 7 overnight underfloor room heating, with boost facility. There are individual thermostats in each room and the hall.

Kitchen

This fitted kitchen with tiled floor comprises; stainless steel sink unit with drainer; double glazed windows; built-in oven (waist height for minimal bend) ceramic hob with chrome 'chimney style' extractor hood over; integrated fridge and freezer. Front window with electric opener. Ceiling spot lighting.

Bedroom

A generously sized double bedroom with a double glazed door opening onto a walk out balcony, allowing ample natural daylight to flood the room. TV and telephone point. A range of power sockets. Emergency pull-cord. Central ceiling light fitting. Door to the spacious walk-in wardrobe with fitted shelving and hanging rails.

Shower Room

Fully tiled purpose built wet room comprising; shower with fitted curtain; WC; vanity unit wash hand basin and fitted mirror above. Heated towel rail. Emergency pull-cord.

Service Charge

- Cleaning of communal windows
- Water rates for communal areas and apartments
- Electricity, heating, lighting and power to communal areas
- 24 hour emergency call system
- Upkeep of gardens and grounds
- Repairs and maintenance to the interior and exterior communal areas
- Contingency fund including internal and external redecoration of communal areas
- Buildings insurance

1 bed | £210,000

The annual service charge for this property is £10,773.83 for the financial year ending 31/03/2027.

The Service charge does not cover external costs such as your Council Tax, electricity or TV, but does include the cost of your Estates Manager, your water rates, our 24 hour emergency call system, the heating and maintenance of all communal areas, exterior property maintenance and gardening. To find out more about the service charges please contact your Property Consultant or Estates Manager.

Car Parking Scheme

Parking is by allocated space subject to availability. The fee is usually £250.00 per annum. Permits are available on a first come, first served basis. Please check with the Estates Manager on site for availability.

Ground Rent

Leasehold 125 Years from 1st January 2014
Ground rent £435 per annum
Ground rent review: 1st Jan 2029

Moving Made Easy & Additional Information

Moving is a huge step, but don't let that hold you back. We have a range of services to help your move go smoothly, including:

- FREE Entitlements Advice to help you find out what benefits you may be entitled to.
- Part Exchange service to help you move without the hassle of having to sell your own home.
- Removal Services that can help you declutter and move you in to your new home.
- Conveyancing specialists who are experienced with sales and purchases of McCarthy Stone retirement properties.

FOR MORE INFORMATION CHECK OUR WEBPAGE
ADDITIONAL SERVICES OR SPEAK WITH OUR
PROPERTY CONSULTANT

- Full Fibre Broadband available
- Mains water and electricity
- Electric room heating
- Mains drainage

