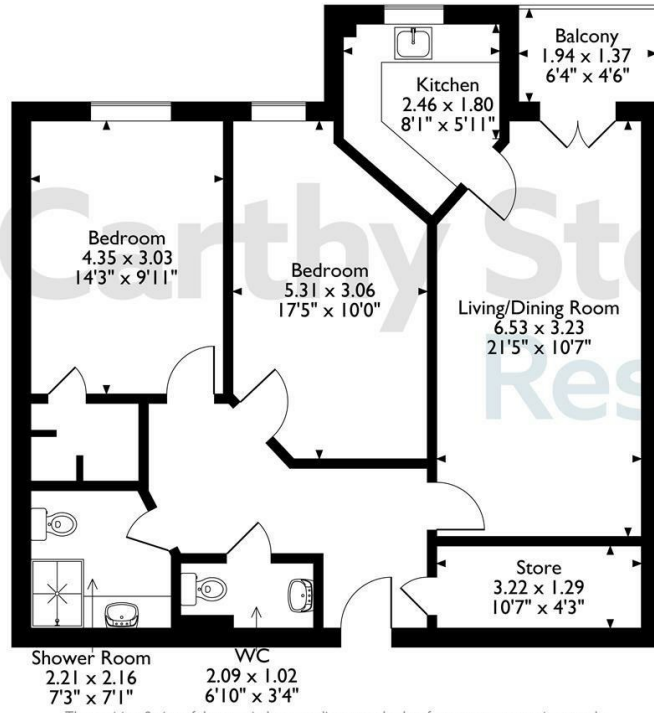
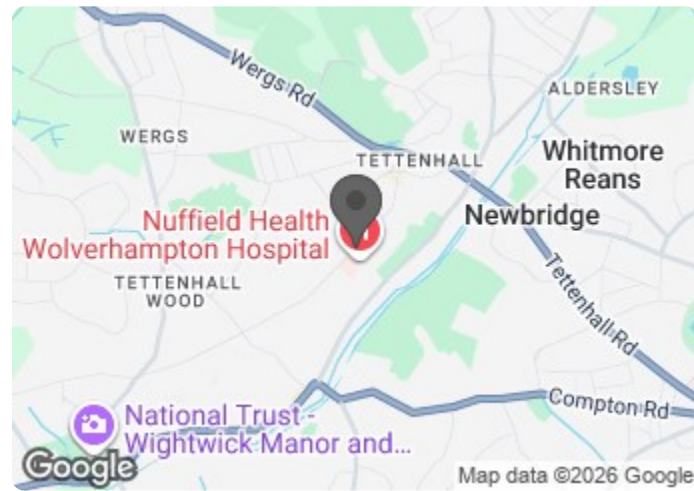


Thorneycroft, Flat 27, Wood Road, Wolverhampton  
Approximate Gross Internal Area  
80 Sq M/861 Sq Ft



Council Tax Band: E



Energy Efficiency Rating		Current	Potential
Very energy efficient - lower running costs			
(92 plus) <b>A</b>			
(81-91) <b>B</b>		<b>85</b>	<b>85</b>
(69-80) <b>C</b>			
(55-68) <b>D</b>			
(39-54) <b>E</b>			
(21-38) <b>F</b>			
(1-20) <b>G</b>			
Not energy efficient - higher running costs			
<b>England &amp; Wales</b>	EU Directive 2002/91/EC		

## 27 Thorneycroft

Wood Road, Wolverhampton, WV6 8PR



**Asking price £225,000 Leasehold**

\*Join us for coffee & cake at our Open Day - Thursday 9th July 2026 - from 10am to 4pm - BOOK YOUR PLACE TODAY!\*

A luxury TWO BEDROOM retirement apartment situated on the FIRST FLOOR in our prestigious THORNEYCROFT development. Further benefits include walk a out BALCONY with pleasant views.

VIEWING IS HIGHLY RECOMMENDED TO FULLY APPRECIATE THE ACCOMMODATION ON OFFER.

McCarthy Stone Retirement Living Plus for Over 70s

**Call us on 0345 556 4104 to find out more.**

resales@mccarthyandstone.co.uk | mccarthyandstoneresales.co.uk

This floor plan is not drawn to scale and is for illustrative purposes only. Any measurements, floor areas (including any total floor area), openings and orientation are approximate and for guidance only. McCarthy Stone Resales do not take liability for any error, omission or misstatement. All parties must rely on their own inspections. It should not be assumed that any furniture or fittings contained in the photographs are included in any sale. All details referring to time and distances to localities are approximate. Details regarding any common charges and other applicable fees are provided by the seller and should not be relied on without verification and further checks made through a solicitor/conveyancer. Please contact the Property Consultant for further information that Appliances (including central heating) have not been tested, therefore it cannot be assumed that they are in good working order. All interested parties are advised to check availability and make an appointment before travelling to view the property to avoid disappointment or wasted time or travel expenses. The details contained within this brochure are for information purposes only and do not form part of any agreement. All purchases will be subject to contract terms. © All artwork (photos and floorplans) and written content are the sole property and copyright of McCarthy & Stone Resales Limited and are legally protected by UK & International copyright laws. Under no circumstance may you download, reproduce, publish or distribute any content for commercial purposes, without prior written permission from McCarthy Stone Resales. Unauthorised



# Thorneycroft, Wood Road, Tettenhall, Wolverhampton, West Midlands, WV6 8PR

## Thorneycroft

Thorneycroft, is a stunning development exclusively for the over 70's, made up of one and two bedroom apartments. Part of our Retirement Living PLUS range (formally Assisted Living) this development is facilitated to provide its homeowners' with extra support if and when needed.

An Estate's Manager is on hand to manage the day to day running of the development and attend to any queries you may have. Within the service charge homeowners are allocated 1 hour's domestic assistance per week, however, additional hours can be arranged by prior appointment. There are a range of personal care packages to suit your requirements - these are provided by the onsite CQC registered care team.

For your reassurance the development has 24-Hour on-site staffing, secure camera entry systems and 24-Hour emergency call system provided by a personal pendant with static call points in bathroom and main bedroom. The development has a homeowners' lounge which is a superb venue for socialising with friends and family. If your guests have travelled from afar, they can extend their stay by booking into the development Guest Suite (usually for a fee of £25 per night - subject to availability)

Just 2 1/2 miles from Wolverhampton city centre, this development is located in the desirable village of Tettenhall, west of Wolverhampton City Centre. Thorneycroft features 29 modern one bedroom apartments and 28 two bedroom apartments within close proximity of the village green.

Homeowners can enjoy the landscaped gardens, on-site bistro and homeowners' lounge. There is also a 24-hour emergency call system and the fully trained onsite care team are on hand around the clock in case you need anything.

The village itself has all the facilities you need, including a Co-op, hairdresser, butcher, delicatessen, artisan bakery, and a good selection of restaurants. A regular bus service runs from right outside the entrance and can take you into the city centre. In the centre of Tettenhall, you'll find a larger variety of amenities so you can spend your free time exactly how you want to.

## Moving Made Easy

Moving is a huge step, but don't let that hold you back. We have a range of services to help your move go smoothly, including:

- FREE Entitlements Advice to help you find out what benefits you may be entitled to.
- Part Exchange service to help you move without the hassle of having to sell your own home.
- Removal Services that can help you declutter and move you in to your new home.
- Conveyancing specialists who are experienced with sales and purchases of McCarthy Stone retirement properties.

For more information speak with our Property Consultant today.

## Entrance Hallway

Front door with spy hole leads to the entrance hall. From the hallway there is a door to a walk-in storage cupboard which houses the hot water tank. The 24-hour emergency response pull cord system and secure door entry system with intercom are also located here. Illuminated light switches, smoke detector. All other doors lead to the living room, bedrooms, shower room and guest WC.

## Living Room

This living room is complimented by double glazed French doors which give access to a walk-out balcony with pleasant outlook over the sports field. Telephone point. TV point (with Sky/Sky+ capabilities). Power sockets. Oak effect feature door with glazed panels lead into a separate kitchen.

## Kitchen

A modern fitted kitchen with a range of high gloss base and wall units. UPVC double glazed window sits above a single sink unit with drainer and mixer tap. Integrated electric oven and ceramic four ringed hob with extractor hood above. Integral fridge and freezer. Tiled floor.

## Master Bedroom

A generous double bedroom with a walk-in wardrobe with

## 2 bed | £225,000

shelving and rails. Having an almost floor to ceiling windows offering lots of natural light. Two ceiling lights, TV and phone point. Emergency response pull cord.

## Shower room

Full wet room with slip resistant flooring, tiled walls and fitted with suite comprising of level access shower, low level WC, vanity unit with wash basin and mirror above. Emergency pull cord.

## Bedroom Two

A second double bedroom, offering a variety of different uses. Ceiling light fitting. TV and phone point. Emergency response pull cord.

## Guest WC

A guest WC is conveniently located off the hallway. Having a low level WC, vanity unit with wash basin.

## Service Charge details

- 24-Hour on-site staffing
- Subsidised meal costs
- 1 hours domestic assistance per week
- Cleaning of communal windows
- Water rates for communal areas and apartments
- Electricity, heating, lighting and power to communal areas
- 24 hour emergency call system
- Upkeep of gardens and grounds
- Repairs and maintenance to the interior and exterior communal areas
- Contingency fund including internal and external redecoration of communal areas
- Buildings insurance

The Service charge does not cover external costs such as your Council Tax, electricity or TV. To find out more about the service charges please please contact your Property Consultant or Estate Manager.

Annual service charge: £12,985.41 for financial year ending 30/06/2026.

## Lease Information

Ground Rent: £510 per annum  
Lease term 999 years from the 01/06/2017  
Ground Rent Review: 01/06/2032

## Parking

Parking is by allocated space subject to availability. The fee is usually £250 per annum, but may vary by development. Permits are available on a first come, first served basis. Please check with the House Manager on site for availability.

## Additional Information & Services

- Broadband available
- Mains water and electricity
- Electric room heating
- Mains drainage

