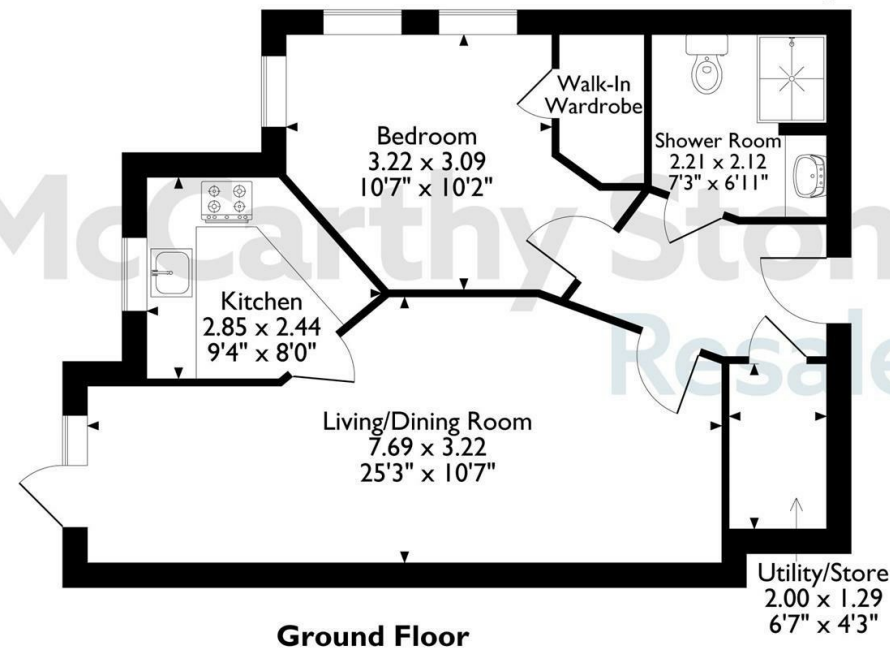
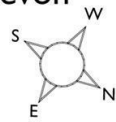


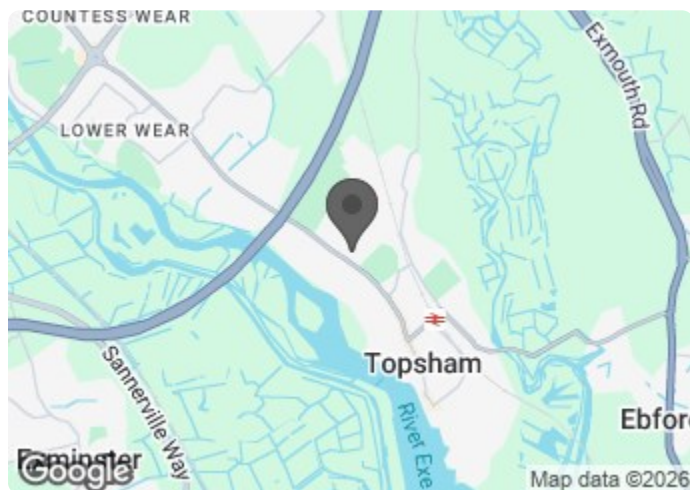
5 Pym Court, Bewick Avenue, Topsham, Exeter, Devon
Approximate Gross Internal Area
51 Sq M/549 Sq Ft



Ground Floor

The position & size of doors, windows, appliances and other features are approximate only.
© ehouse. Unauthorised reproduction prohibited. Drawing ref. dig/8688504/DST.

Council Tax Band: B



Energy Efficiency Rating		Current	Potential
Very energy efficient - lower running costs			
(92 plus) A			
(81-91) B		86	86
(69-80) C			
(55-68) D			
(39-54) E			
(21-38) F			
(1-20) G			
Not energy efficient - higher running costs			
England & Wales	EU Directive 2002/91/EC		

5 Pym Court

Bewick Avenue, Topsham, Exeter, EX3 0FR



Asking price £239,950 Leasehold

Located on the ground floor, and within close access to the wonderful facilities this retirement development offers, is this beautifully presented, one bedroom apartment with direct access out on to a south/easterly facing patio area.

Energy Efficient *Pet Friendly*

Call us on 0345 556 4104 to find out more.

resales@mccarthyandstone.co.uk | mccarthyandstoneresales.co.uk

This floor plan is not drawn to scale and is for illustrative purposes only. Any measurements, floor areas (including any total floor area), openings and orientation are approximate and for guidance only. McCarthy Stone Resales do not take liability for any error, omission or misstatement. All parties must rely on their own inspections. It should not be assumed that any furniture or fittings contained in the photographs are included in any sale. All details referring to time and distances to localities are approximate. Details regarding any common charges and other applicable fees are provided by the seller and should not be relied on without verification and further checks made through a solicitor/conveyancer. Please contact the Property Consultant for further information that Appliances (including central heating) have not been tested, therefore it cannot be assumed that they are in good working order. All interested parties are advised to check availability and make an appointment before travelling to view the property to avoid disappointment or wasted time or travel expenses. The details contained within this brochure are for information purposes only and do not form part of any agreement. All purchases will be subject to contract terms. © All artwork (photos and floorplans) and written content are the sole property and copyright of McCarthy & Stone Resales Limited and are legally protected by UK & International copyright laws. Under no circumstance may you download, reproduce, publish or distribute any content for commercial purposes, without prior written permission from McCarthy Stone Resales. McCarthy & Stone Resales Limited, Trading as McCarthy Stone Resales
Registered Office: 100 Holdenhurst Road, Bournemouth, Dorset, BH8 8AQ.
Registered in England and Wales No. 10716544



Pym Court, Bewick Avenue, Topsham, Exeter

1 Bed | £239,950

Pym Court

Pym Court is a stunning McCarthy Stone development, having been completed in 2022. It allows Homeowners to live independently with support to suit their needs. The development has staff on-site 24-hours a day, 365 days a year, so help is always available in case of emergency. Homeowners can also benefit from tailor-made support packages and an hour of domestic assistance per week is included within the service charge. You'll be able to decide which chores you want taken care of, so you'll have more time to do the things you love - but, you'll still be able to keep your independence and make use of the stunning landscaped gardens.

There are a variety of regular activities to choose from including; coffee mornings, film nights and themed events. Whilst there is something for everyone there is certainly no obligation to participate and home owners can 'dip in and out' of activities or quite naturally, remain as private as they wish.

Even though our retirement properties in Topsham offer you the perfect opportunity to downsize, you'll never feel like you're making any sacrifices. This is because, on the development, you'll find everything you could possibly need to enjoy a full and active retirement. This includes a bistro and a communal lounge that regularly hosts events. There is also a guest suite for when family and friends come to stay, and pets are more than welcome.

The Local Area

Topsham is a coastal and affluent suburb of Exeter that sits alongside the Exe estuary, which is famous for its sailing and water sports. It was once a thriving port and shipbuilding centre, and today there's still a charming passenger ferry that transports passengers across the Exe, as well as plenty of waterside pubs where you can stop for lunch. You can even take long or short cruises where you can discover the wildlife of the Exe estuary or visit Exmouth's sandy beaches.

Topsham is a desirable and quirky town that boasts a selection of independent retailers. Within Topsham, there's a popular antiques centre, an authentic Sunday market and plenty of local stores where the owners are incredibly passionate about their goods. Within the town, there's also a collection of distinctive buildings, including 17th century merchant houses that sit along The Strand. One of these is the Topsham Museum, where a number of interesting exhibitions are held.

If you like to get out and explore further afield, then you'll be pleased to know that Pym Court is located on a main bus route, with bus stops immediately outside the development. The development is also close to Topsham railway station, which sits on the Avocet Line. All trains from Exmouth to Exeter St David's stop at Topsham, and there's a half-hourly daytime service in each direction.

Pym Court is located on Exeter Road in the heart of Topsham, with a great range of local amenities close by. An Aldi supermarket is just 0.3 miles away, and you'll be able to reach a great range of bars and

restaurants if you head 0.2 miles in the other direction. If you'd like to travel further afield, then Topsham railway station is only 0.6 miles away from the development.

There's plenty to keep you busy in Topsham. Topsham Recreation Ground is just 0.3 miles away from Pym Court and Topsham Swimming Pool is 0.5 miles away.

With so much to see, do and explore in the local area, it's perhaps no wonder that The Sunday Times voted Topsham as the best place to live in the South West in April 2019.

5 Pym Court

Located on the ground floor, and within close proximity to the wonderful facilities this development offers, is this one bedroom apartment. The generous size living room offers direct access out on to a south easterly facing patio area, the modern kitchen offers integrated appliances and the double bedroom has a walk in wardrobe. From the entrance hall, the modern bathroom with level access shower is found, along with a walk in airing cupboard/store.

Entrance Hall

Solid Oak-veneered entrance door with spy-hole. A security intercom system provides both a visual (via the home-owners TV) and verbal link to the main development entrance door, along with an emergency pull cord. Walk-in utility cupboard with washer/dryer, light, shelving, Gledhill boiler supplying hot water and 'Vent Axia' heat exchange unit. Feature glazed panelled door to Living Room.

Living Room

A bright and spacious living room with a double glazed door with matching side panel opening onto a small, south/easterly facing patio area. A feature glazed panelled door leads to the kitchen.

Kitchen

Double-glazed electronically operated window. Luxury soft white gloss-fronted fitted units with under unit lighting, contrasting worktops with matching upstands and incorporating an inset sink/drain unit. Comprehensive range of integrated appliances comprise; a four-ringed hob with a contemporary glass splash panel and stainless steel extractor hood over, waist-level oven and fridge & freezer.

Double Bedroom

A lovely size double, dual aspect bedroom benefiting from a walk in wardrobe with hanging and shelving space. Emergency pull cord.

Shower Room

A modern facility with white sanitary ware comprising; easy-access walk-in shower, a back-to-the wall WC with concealed cistern, vanity wash-basin with cupboard unit below and work surface over, mirror with integral light above. Ladder radiator, ceiling spot lights, emergency pull cord and extensively tiled walls and floor.

Additional Information & Services

- Ultrafast Full Fibre Broadband available
- Mains water and electricity
- Electric room heating

- Mains drainage
- No parking space

Service Charge

What your service charge pays for:

- Estate Manager who ensures the development runs smoothly
- CQC Registered care staff on-site 24/7 for your peace of mind
- 1 hour cleaning / domestic assistance per week, per apartment
- 24hr emergency call system
- Monitored fire alarms and door camera entry security systems
- Maintaining lifts
- Heating and lighting in communal areas
- The running costs of the onsite restaurant
- Cleaning of communal areas daily
- Cleaning of windows
- Maintenance of the landscaped gardens and grounds
- Repairs & maintenance to the interior communal areas
- Contingency fund including internal and external redecoration of communal areas
- Buildings insurance, water and sewerage rates

The service charge does not cover external costs such as your Council Tax, electricity or TV. Find out more about service charges please contact your Property Consultant or Estate Manager.

Service Charge: £10,973.15 per annum (for financial year ending 28/02/2027)

Ask about our FREE ENTITLEMENTS SERVICE to find out what benefits you may be entitled to. (Often offset by Government Entitlements e.g. Attendance Allowance £3,500-£5,200pa).

Lease Information

999 Years from the 1st January 2022
Ground rent: £435 per annum
Ground rent review date: January 2037

Moving Made Easy

Moving is a huge step, but don't let that hold you back. We have a range of services to help your move go smoothly, including:

- FREE Entitlements Advice to help you find out what benefits you may be entitled to.
- Part Exchange service to help you move without the hassle of having to sell your own home.
- Removal Services that can help you declutter and move you in to your new home.
- Conveyancing specialists who are experienced with sales and purchases of McCarthy Stone retirement properties.

For more information speak with our Property Consultant today.

