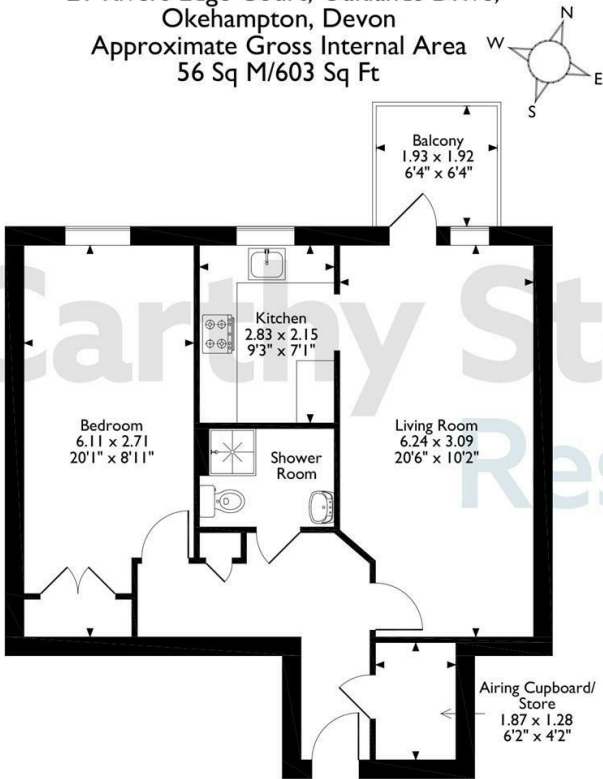
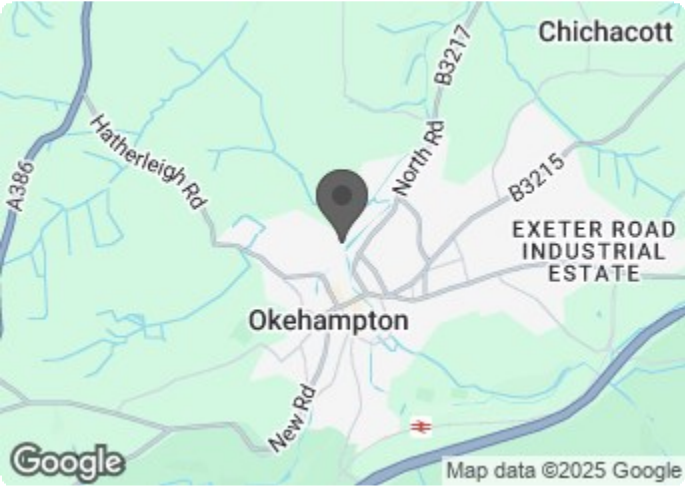


21 Rivers Edge Court, Oaklands Drive,  
Okehampton, Devon  
Approximate Gross Internal Area  
56 Sq M/603 Sq Ft



The position & size of doors, windows, appliances and other features are approximate only.  
© ehouse. Unauthorised reproduction prohibited. Drawing ref. dg/863648/DST.

Council Tax Band: B



Energy Efficiency Rating		
	Current	Potential
Very energy efficient - lower running costs		
(92 plus) A		
(81-91) B	84	88
(69-80) C		
(55-68) D		
(39-54) E		
(21-38) F		
(1-20) G		
Not energy efficient - higher running costs		
England & Wales	EU Directive 2002/91/EC	

## 21 Rivers Edge Court

Oaklands Drive, Okehampton, EX20 1FN



Asking price £165,000 Leasehold

Refurbished to a high standard, this first floor, one bedroom retirement apartment enjoys a walk out balcony from the living room.

\*Energy Efficient\* \*Pet Friendly\*

This floor plan is not drawn to scale and is for illustrative purposes only. Any measurements, floor areas (including any total floor area), openings and orientation are approximate and for guidance only. McCarthy Stone Resales do not take liability for any error, omission or misstatement. All parties must rely on their own inspections. It should not be assumed that any furniture or fittings contained in the photographs are included in any sale. All details referring to time and distances to localities are approximate. Details regarding any common charges and other applicable fees are provided by the seller and should not be relied on without verification and further checks made through a solicitor/conveyancer. Please contact the Property Consultant for further information that Appliances (including central heating) have not been tested, therefore it cannot be assumed that they are in good working order. All interested parties are advised to check availability and make an appointment before travelling to view the property to avoid disappointment or wasted time or travel expenses. The details contained within this brochure are for information purposes only and do not form part of any agreement. All purchases will be subject to contract terms. © All artwork (photos and floorplans) and written content are the sole property and copyright of McCarthy & Stone Resales Limited and are legally protected by UK & International copyright laws. Under no circumstance may you download, reproduce, publish or distribute any content for commercial purposes, without prior written permission from McCarthy Stone Resales. Unauthorised duplication or usage for commercial purposes is prohibited by the Copyright law and will be prosecuted.



Call us on 0345 556 4104 to find out more.

resales@mccarthyandstone.co.uk | mccarthyandstoneresales.co.uk



# Rivers Edge Court, Oaklands Drive, Okehampton

**Rivers Edge Court**  
Constructed in early-2010 by award-winning retirement home specialists McCarthy and Stone, Rivers Edge Court is a 'Retirement Living' development providing an exceptional quality-of-lifestyle opportunity for the over 60's and designed for independent living with the peace-of-mind provided by the day-to-day support of our excellent House Manager.

Rivers Edge Court enjoys excellent communal facilities including a homeowner's lounge, laundry, scooter store and landscaped gardens. All apartments are equipped with a 24-hour emergency call facility and sophisticated intercom system providing both a visual and verbal link to the main development entrance. There is also the excellent guest suite widely used by visiting family and friends for which a small charge per night applies.

It's so easy to make new friends and to lead a busy and fulfilled life at Rivers Edge Court; there are always plenty of regular activities to choose from including; regular coffee mornings, knitting group and organised coach trips. Whilst there is something for everyone there is certainly no obligation to participate and home owners can, of course, remain as private or involved as they wish.

**The Local Area**  
As the development name implies, it is in a tranquil Riverside setting adjacent to the River Okement with mature trees and shrubs around. We have previously described the development as 'unique' to reflect a location that in so many way feels quite rural but in reality is only a few minutes walk from a Waitrose supermarket with Okehampton High Street, it's cafes, banks, pubs, restaurants, two further supermarkets and two independent shopping arcades just a further short flat walk away.

**No.21**  
This beautiful first floor apartment has been refurbished to a high standard to include a tastefully designed kitchen and shower room and has been fully re carpeted throughout. A walk out balcony is accessed from the living room and has an interesting outlook over the front of the development.

**Entrance Hall**  
With a solid entrance door with spy-hole, security intercom system. Emergency pull cord, very large store/airing cupboard with shelving housing the new Gledhill boiler supplying domestic hot water and the 'Vent Axia' heat exchange unit. Further shallow cupboard with consumer unit.



**Living Room**  
A really welcoming room with double-glazed French door opening onto a West facing balcony that overlooks the front of the development.

**Kitchen**  
With a double-glazed window with a pleasant outlook. Having been recently upgraded, this tastefully designed modern kitchen features a range of white fitted wall and base units with wood effect worktops incorporating a stainless steel inset sink unit with mixer tap. Integrated appliances comprise; a modern induction hob with two plates and extractor hood over, oven, concealed slimline dishwasher and concealed under counter fridge with freezer compartment. Extensive wooden splash-backs.

**Double Bedroom**  
A bright and spacious bedroom with a built in mirrored wardrobe with plenty of hanging space and shelving.

**Shower Room**  
Having recently been upgraded, this modern white suite comprises; shower cubicle with feature tiling, WC, vanity wash-hand basin with cupboard unit below and mirrored storage cupboard with lighting above. Ladder radiator, vinyl flooring and emergency pull cord.

**Parking**  
Private car parking is available with a yearly permit at an annual charge of around £250 per annum (subject to availability)

**Additional Information & Services**

- Superfast Fibre Broadband available
- Mains water and electricity
- Electric room heating
- Mains drainage

**Service Charge**  
What your service charge pays for:

- House Manager who ensures the development runs smoothly
- All maintenance of the building and grounds, including window cleaning, gardening and upkeep of the building exteriors and communal areas
- 24hr emergency call system
- Monitored fire alarms and door camera entry security systems
- Maintaining lifts
- Heating and lighting in communal areas
- Contingency fund including internal and external redecoration of communal areas
- Buildings insurance, water and sewerage rates



## 1 Bed | £165,000

The service charge does not cover external costs such as your Council Tax, electricity or TV. Find out more about service charges please contact your Property Consultant or House Manager.

Service Charge: £2,535.83 per annum (for financial year ending 28/02/2026).

Ask about our FREE ENTITLEMENTS SERVICE to find out what benefits you may be entitled to to support you with service charges and living costs.  
(Often offset by Government Entitlements e.g. Attendance Allowance £3,500-£5,200pa).

**Lease**  
Lease: 125 Years from 1st June 2010  
Ground rent: £425 per annum  
Ground rent review: 1st June 2025

**Moving Made Easy**  
Moving is a huge step, but don't let that hold you back. We have a range of services to help your move go smoothly, including:

- FREE Entitlements Advice to help you find out what benefits you may be entitled to that can assist with service charges or living costs.
- Part Exchange service to help you move without the hassle of having to sell your own home.
- Removal Services that can help you declutter and move you in to your new home.
- Conveyancing specialists who are experienced with sales and purchases of McCarthy Stone retirement properties.

For more information speak with our Property Consultant today.

