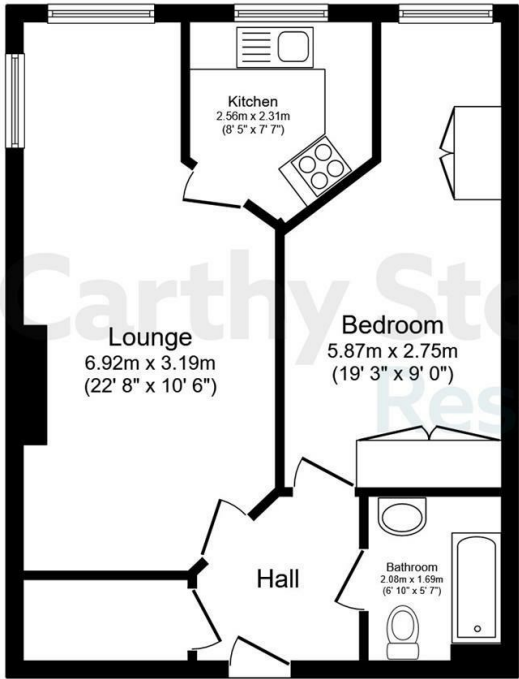


3 Hartwell Court

Church Street, Eastwood, NG16 3TJ



Total floor area 48.6 sq.m. (523 sq.ft.) approx
This floor plan is for illustrative purposes only. It is not drawn to scale. Any measurements, floor areas (including any total floor area), openings and orientation are approximate. No details are guaranteed, they cannot be relied upon for any purpose and they do not form part of any agreement. No liability is taken for any error, omission or misstatement. A party must rely upon its own inspection(s). Powered by www.focalagent.com

Council Tax Band: B



Energy Efficiency Rating		
	Current	Potential
Very energy efficient - lower running costs		
(92 plus) A		
(81-91) B	84	86
(69-80) C		
(55-68) D		
(39-54) E		
(21-38) F		
(1-20) G		
Not energy efficient - higher running costs		
England & Wales	EU Directive 2002/91/EC	



Asking price £150,000 Leasehold

A WELL PRESENTED one bedroom lower ground floor apartment. Hartwell Court is a popular McARTHUR & STONE retirement living development.

Entitlements Advice and Part Exchange available - speak to your Property Consultant for more information

This floor plan is not drawn to scale and is for illustrative purposes only. Any measurements, floor areas (including any total floor area), openings and orientation are approximate and for guidance only. McCarthy Stone Resales do not take liability for any error, omission or misstatement. All parties must rely on their own inspections. It should not be assumed that any furniture or fittings contained in the photographs are included in any sale. All details referring to time and distances to localities are approximate. Details regarding any common charges and other applicable fees are provided by the seller and should not be relied on without verification and further checks made through a solicitor/conveyancer. Please contact the Property Consultant for further information that Appliances (including central heating) have not been tested, therefore it cannot be assumed that they are in good working order. All interested parties are advised to check availability and make an appointment before travelling to view the property to avoid disappointment or wasted time or travel expenses. The details contained within this brochure are for information purposes only and do not form part of any agreement. All purchases will be subject to contract terms. © All artwork (photos and floorplans) and written content are the sole property and copyright of McCarthy & Stone Resales Limited and are legally protected by UK & International copyright laws. Under no circumstance may you download, reproduce, publish or distribute any content for commercial purposes, without prior written permission from McCarthy Stone Resales. Unauthorised duplication or usage for commercial purposes is prohibited by the Copyright law and will be prosecuted.



Hartwell Court, Church Street, Eastwood, Nottingham

Hartwell Court
Hartwell Court was built by McCarthy & Stone and designed specifically for independent living for the over 60's and is located in the popular market town of Eastwood, 8 miles north west of Nottingham.
The development consists of 34 one & two bedroom retirement apartments with design features to make day-to-day living easier. The dedicated House Manager is on site during working hours to take care of things and make you feel at home.
There's no need to worry about the burden of maintenance costs as the service charge covers the cost of all external maintenance, gardening and landscaping, external window cleaning, buildings insurance, water rates and security systems. All energy costs of the homeowners lounge, laundry room and other communal areas are covered in the service charge. For your peace of mind the development has a 24-hour emergency call systems, should you need assistance. The Homeowners lounge and well maintained gardens provide great space to socialise with friends and family. If your guests have travelled from afar, they can extend their stay by booking into the development Guest Suite (usually £25 per night, subject to availability).

Local Area
Hartwell Court is situated in the heart of the popular and sought after historic town of Eastwood. There's plenty of amenities on the doorstep, including a range of shops, a post office, supermarket, leisure facilities, bars and restaurants and much more. If you want to travel further afield, Eastwood is within easy access to the M1 motorway, junction 26 as well as public transport links into Nottingham city and Derby city centres.

Apartment Overview
A well present one bedroom lower ground floor apartment which has a 'show room' feel to it, with upgraded kitchen and shower. This is positioned opposite the lift for convenience within popular McCarthy & Stone development.

Entrance Hall
Front door with spy hole leads to a spacious hall with the 24-hour Appello emergency response pull cord system, security door entry system and smoke detector. There is a large cupboard housing the boiler and could be used as an airing cupboard or for extra storage space. Further doors from the hallway lead to the lounge, bedrooms and bathroom.



Lounge
Spacious lounge benefiting from a dual aspect allowing lots of natural light in. Attractive fire place with stone effect surround, which provides a nice focal point and there's ample room for dining. Electric heater, TV and telephone sockets and raised power points. Partially glazed double doors lead into kitchen.

Kitchen
Fitted kitchen with a range of modern low and eye level units and drawers with a roll top work surface with inset stainless steel sink with mono lever tap and window above. Oven with ceramic hob above and cooker hood. Free standing fridge / freezer. Ceiling spot lights, under pelmet lighting, power points, partially tiled walls and vinyl flooring.

Bedroom
Spacious bedroom with large bi-fold opening wardrobes with mirror fronted doors and additional white three panel build in wardrobe, providing great space for storage. TV and telephone sockets and raised power points.

Shower Room
Situated off the hallway, perfect for guests. Fully tiled and comprising with a shower cubical with adjustable shower head and hand rail. Vanity unit with inset hand basin and mirror over, WC and emergency pull cord.

Car Parking
Car parking is on a first come first serve basis.

- Service Charge (breakdown)**
- Cleaning of communal windows
 - Water rates for communal areas and apartments
 - Electricity, heating, lighting and power to communal areas
 - Window Cleaning (outside only)
 - 24-hour emergency call system
 - Upkeep of gardens and grounds
 - Intruder-alarm system
 - Repairs and maintenance to the interior and exterior communal areas
 - Contingency fund including internal and external redecoration of communal areas
 - Buildings insurance

The Service charge does not cover external costs such as your



1 Bed | £150,000

Council Tax, electricity or TV. To find out more about the service charges please contact your Property Consultant or House Manager.

Annual service charge: £3,085.08 for financial year ending 31/03/26).

Ask about our FREE ENTITLEMENTS SERVICE to find out what benefits you may be entitled to.

Leasehold Details
lease: 125 years from 1st June 2008
Ground rent: £730.81 per annum
Ground rent review: 1st June 2038
Managed by: McCarthy and Stone Management Services
It is a condition of purchase that residents must meet the age requirement of 60 years and over.

Moving Made Easy & Additional Information
Moving is a huge step, but don't let that hold you back. We have a range of services to help your move go smoothly, including:

- FREE Entitlements Advice to help you find out what benefits you may be entitled to.
- Part Exchange service to help you move without the hassle of having to sell your own home.
- Removal Services that can help you declutter and move you in to your new home.
- Conveyancing specialists who are experienced with sales and purchases of McCarthy Stone retirement properties.

FOR MORE INFORMATION CHECK OUR WEBPAGE
ADDITIONAL SERVICES OR SPEAK WITH OUR PROPERTY CONSULTANT

- Full Fibre Broadband available
- Mains water and electricity
- Electric room heating
- Mains drainage

