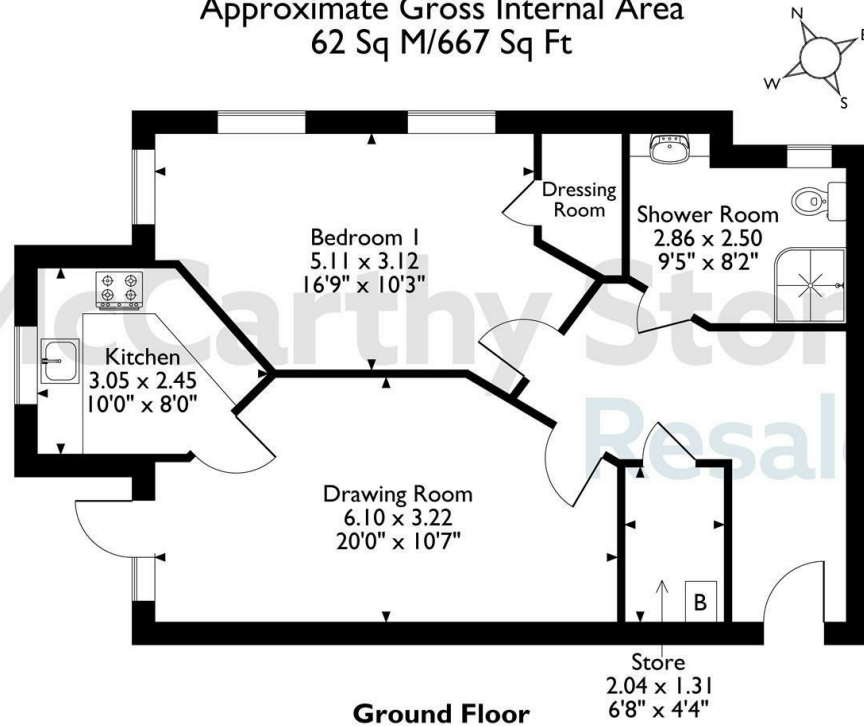


8 Austen Place, Lower Turk Street, Alton, Hampshire  
 Approximate Gross Internal Area  
 62 Sq M/667 Sq Ft



The position & size of doors, windows, appliances and other features are approximate only.  
 © ehouse. Unauthorised reproduction prohibited. Drawing ref. dig/8669239/DST.

Council Tax Band: B



Energy Efficiency Rating		
	Current	Potential
Very energy efficient - lower running costs		
(92 plus) <b>A</b>		
(81-91) <b>B</b>	<b>84</b>	<b>84</b>
(69-80) <b>C</b>		
(55-68) <b>D</b>		
(39-54) <b>E</b>		
(21-38) <b>F</b>		
(1-20) <b>G</b>		
Not energy efficient - higher running costs		
<b>England &amp; Wales</b>	EU Directive 2002/91/EC	

This floor plan is not drawn to scale and is for illustrative purposes only. Any measurements, floor areas (including any total floor area), openings and orientation are approximate and for guidance only. McCarthy Stone Resales do not take liability for any error, omission or misstatement. All parties must rely on their own inspections. It should not be assumed that any furniture or fittings contained in the photographs are included in any sale. All details referring to time and distances to localities are approximate. Details regarding any common charges and other applicable fees are provided by the seller and should not be relied on without verification and further checks made through a solicitor/conveyancer. Please contact the Property Consultant for further information that Appliances (including central heating) have not been tested, therefore it cannot be assumed that they are in good working order. All interested parties are advised to check availability and make an appointment before travelling to view the property to avoid disappointment or wasted time or travel expenses. The details contained within this brochure are for information purposes only and do not form part of any agreement. All purchases will be subject to contract terms. © All artwork (photos and floorplans) and written content are the sole property and copyright of McCarthy & Stone Resales Limited and are legally protected by UK & International copyright laws. Under no circumstance may you

**8 Austen Place**

Lower Turk Street, Alton, GU34 1FZ

**PRICE REDUCED**



**PRICE REDUCTION**

**Asking price £229,500 Leasehold**

A BEAUTIFUL AND ONE OF THE LARGEST ONE BEDROOM GROUND FLOOR PROPERTIES WITH A WESTERLY FACING RETIREMENT APARTMENT WITH PATIO DOORS LEADING OUT ONTO ITS OWN SMALL PATIO AREA.

**Call us on 0345 556 4104 to find out more.**



# Austen Place, Lower Turk Street, Alton,

## 1 Bed | £229,500

**PRICE  
REDUCED**

### Summary

Austen Place is a purpose built Retirement Living Plus development built by McCarthy & Stone, designed specifically for the over 70s, for those who wish to enjoy independent living but may need some extra care and support. There is an Estate Manager who leads the team and oversees the development.

Communal facilities include a Club lounge where social events and activities take place, a function room, a wellbeing suite and landscaped gardens. There are fully equipped laundry rooms and a restaurant which is table service and serves freshly prepared meals daily. If your guests wish to stay, there is guest suite accommodation which can be booked (fees apply). There is a 24 hour emergency call system provided by a personal pendant and call points in your bedroom and bathroom as well as onsite management 24 hours a day.

One hour of domestic support per week is included in the service charge at Austen Place with additional services including care and support available at an extra charge. However, this can be from as little as 15 minutes per session which can be increased or decreased to suit your needs.

Austen Place is situated a stone's throw from a Sainsbury's supermarket and a short walk from the high street, which offers a wealth of local amenities to choose from.

### Entrance Hall

Front door with spyhole leads to the entrance hall, the 24 hour Tunstall emergency response pull cord system is in place. Illuminated light switches and smoke detector. From the hallway there is a door to a walk in storage and airing cupboard. Doors lead to the bedroom, living room and shower room.

### Lounge

A very well presented spacious living/dining room. Two ceiling light points, power points. TV & telephone points. Glazed Patio door to side giving access to a covered patio with a Westerly aspect. Partially glazed door leads onto a separate kitchen

### Kitchen

Fully fitted modern style kitchen with modern cupboard doors and co-ordinating work surfaces. Contemporary ceiling lights.

Stainless steel sink with chrome mixer tap. There is an integrated fridge/freezer and a fitted Bosch electric oven. There is also a fitted Bosch electric ceramic hob with a steel Bosch extractor over and splashback. Electrically operated window.

### Shower Room

Modern suite comprising of; close-coupled WC, vanity wash-hand basin with fitted furniture surround including storage below, illuminated mirror cabinet with integrated shaver point and down lights over, walk-in level access shower with thermostatically controlled shower. fully tiled walls and wet room vinyl flooring, electric heated towel rail, emergency pull cord and ceiling spot light.

### Bedroom

A large double bedroom with door to walk-in wardrobe. TV and phone point and ceiling lights, featuring the desired benefit of a dual aspect outlook with three full length windows.

### Service Charge (breakdown)

- Cleaning of communal windows
- Water rates for communal areas and apartments
- Electricity, heating, lighting and power to communal areas
- 24 hour emergency call system
- Upkeep of gardens and grounds
- Repairs and maintenance to the interior and exterior communal areas
- Contingency fund including internal and external redecoration of communal areas
- Buildings insurance

One hour of domestic support per week is included in the service charge

The Service charge is £9,469.09 until 30/06/2026 and it does not cover external costs such as your Council Tax, electricity or TV. To find out more about service charges please contact your Property Consultant or Estates Manager.

### Lease Information

Lease 999 years from January 2018  
Ground rent £435 per annum  
Ground rent review date: January 2033

### Moving Made Easy & Additional Information

Moving is a huge step, but don't let that hold you back. We have a range of services to help your move go smoothly, including:

- FREE Entitlements Advice to help you find out what benefits you may be entitled to.
- Part Exchange service to help you move without the hassle of having to sell your own home.
- Removal Services that can help you declutter and move you in to your new home.
- Conveyancing specialists who are experienced with sales and purchases of McCarthy Stone retirement properties. For more information check our webpage additional services or speak with our property consultant

- Full Fibre Broadband available
- Mains water and electricity
- Electric room heating
- Mains drainage

